



FLOWER CLASS CORVETTE HMS BEGONIA

About the Flower class corvette HMS Begonia :

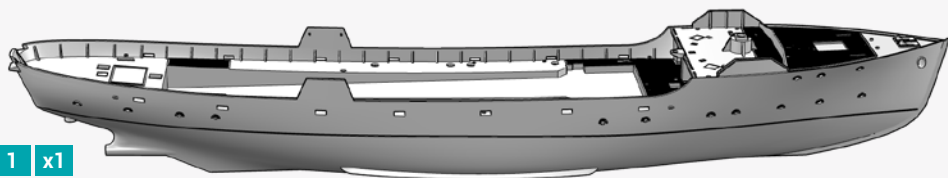
When the battle for convoys started in the Atlantic Ocean, Royal Navy was desperately short of escorts to protect the cargo ships against U-boat attacks. An emergency solution was to adapt the design of a whaler into an escort, which led to the birth of the famous Flower class corvettes. First units had a modest armament consisting of a 4-inch gun on the forecastle, a single 40mm pompom amidships and two twin Lewis machine guns on each side of the bridge. ASW armament consisted of four Mk.II depth charges throwers and two depth charges rails on stern. Although handicapped by their low speed of 16 knots, the 294 Flowers that were built bore the brunt of the battle until mid-1943, when new classes of escorts, such as the Rivers and US Destroyer Escorts, began to be available. The Black Cat Models HMCS Agassiz depicts her in a mine sweeping fit, while the HMS Begonia is in the standard escort appearance.

À propos de la corvette de classe Flower HMS Begonia :

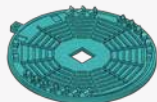
Lorsque commence la bataille pour les convois en Atlantique Nord, la Royal Navy ne dispose pas du nombre suffisant de bâtiments pour assurer une protection efficace contre les attaques des U-boots. Une solution d'urgence consista à transformer un navire de chasse à la baleine en escorteur, ce qui donna naissance à la classe des corvettes Flower. Les premières unités étaient équipées d'un armement modeste consistant en un simple canon de 4in sur la plage avant, un pompom de 40mm contre avions à mi-coque, et deux mitrailleuses Lewis sur les ailerons de passerelle. La lutte ASM était confiée à quatre mortiers grenadeurs et deux rails pour charges de profondeur sur la plage arrière. Malgré leur faible vitesse de seize nœuds, les 294 corvettes construites vont porter le poids de la lutte dans la Bataille de l'Atlantique jusqu'en 1943 et l'arrivée de classes plus performantes comme les frégates River et les Destroyer Escort américains. Le HMCS Agassiz de la Marine Royale Canadienne est représentée dans sa version de guerre contre les mines, le HMS Begonia quand à lui est en version classique d'escorteur.

PARTS

RESIN PARTS



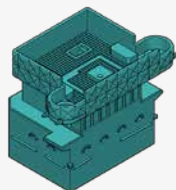
1 x1



2 x1



3 x1



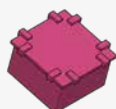
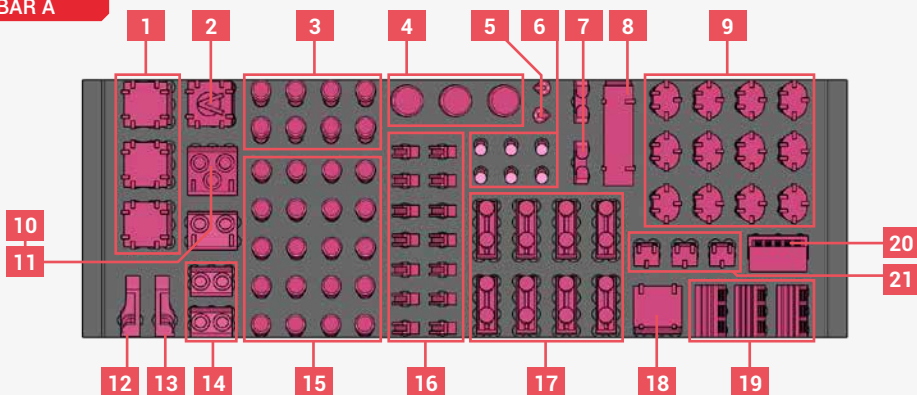
4 x1



5 x1

3D PRINTED PARTS

BAR A



1 x3



2 x1



3 x2



4 x2



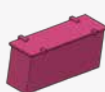
5 x1



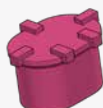
6 x3



7 x2



8 x1



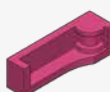
9 x8



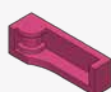
10 x1



11 x1



12 x1



13 x1



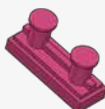
14 x2



15 x17



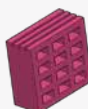
16 x12



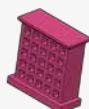
17 x6



18 x1



19 x3

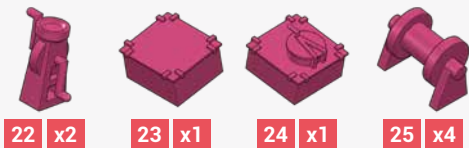
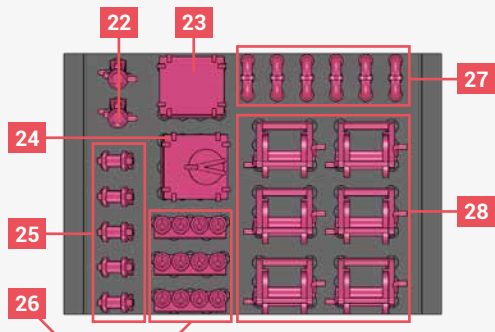


20 x1

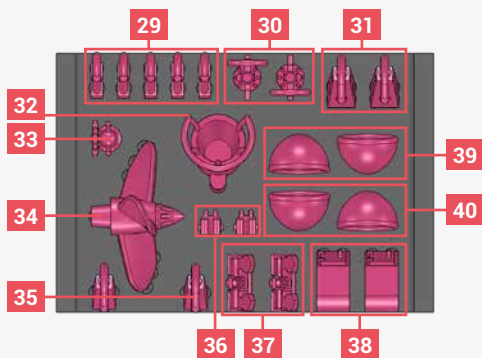


21 x2

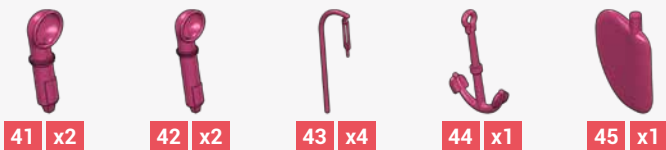
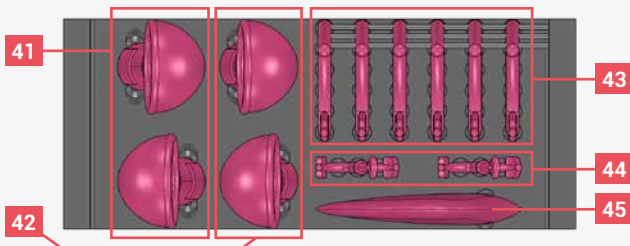
BAR B



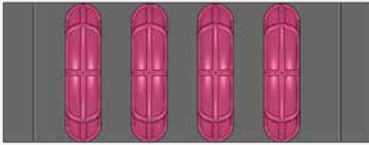
BAR C



BAR D

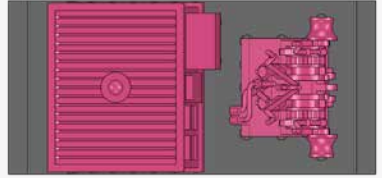


BAR E

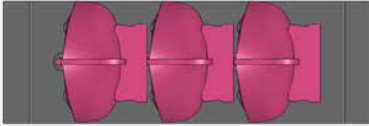


46 x4

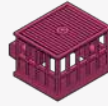
BAR F



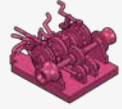
BAR G



49 x2



47 x1



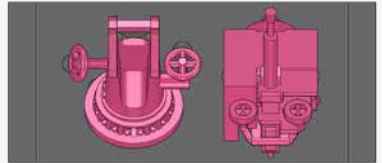
48 x1

BAR I

BAR H



50 x16

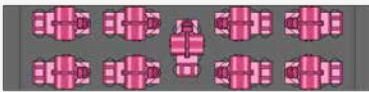


51 x1



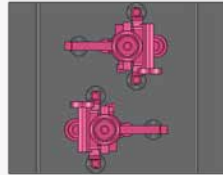
52 x1

BAR J



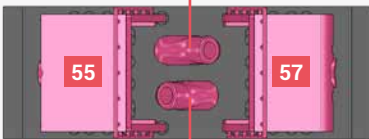
53 x4

BAR K



54 x1

BAR L



58

55

57

56



55 x1



56 x1



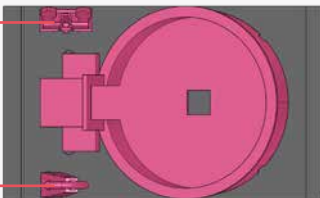
57 x1



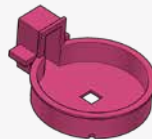
58 x1

BAR M

37

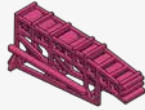
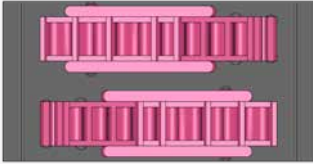


31

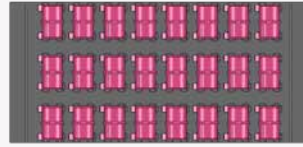


59 x1

BAR N

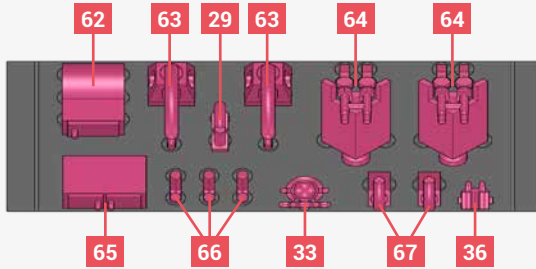


60 x2



61 x21

BAR P



62 x1



63 x1



64 x2



65 x1

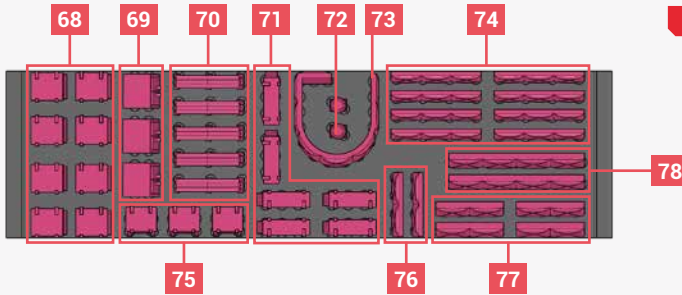


66 x2



67 x1

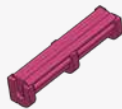
BAR Q



68 x6



69 x2



70 x4



71 x4



72 x1



73 x1



74 x8



75 x2



76 x2

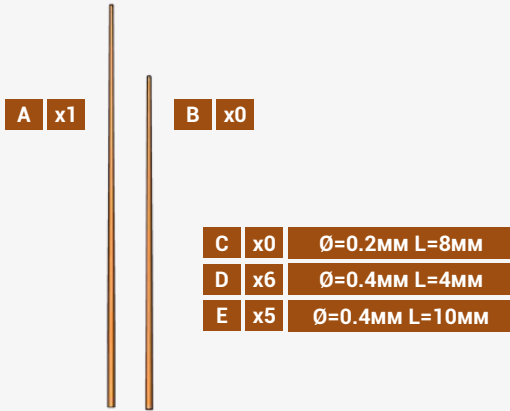


77 x4

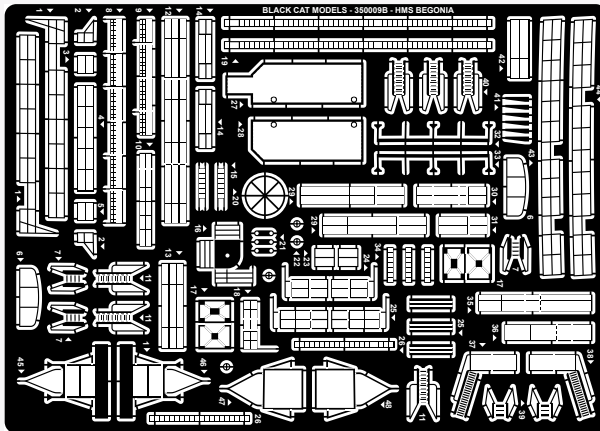


78 x2

BRASS PARTS



PHOTOETCH PARTS



ASSEMBLY NOTES

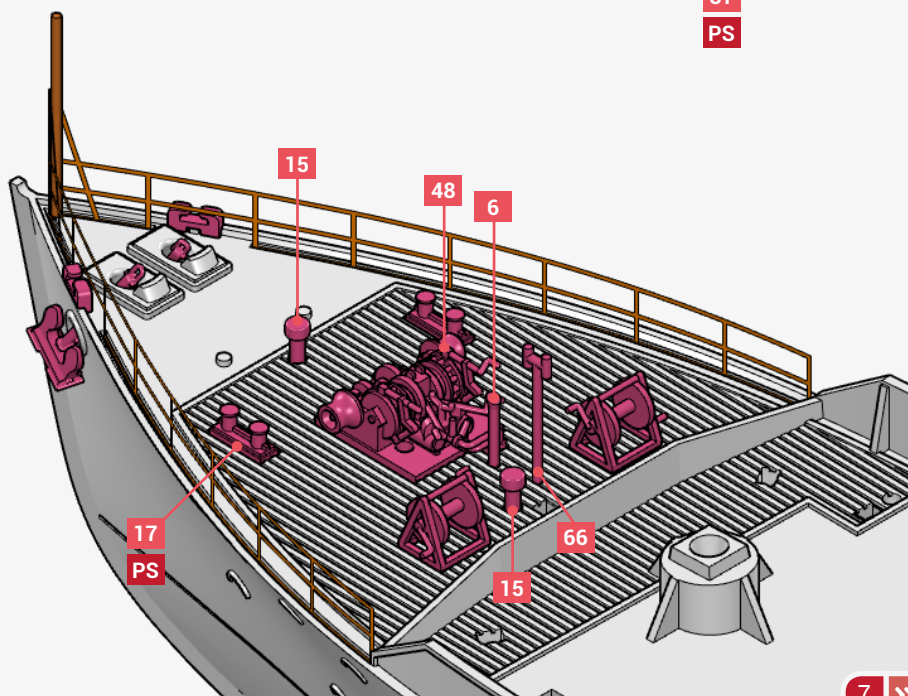
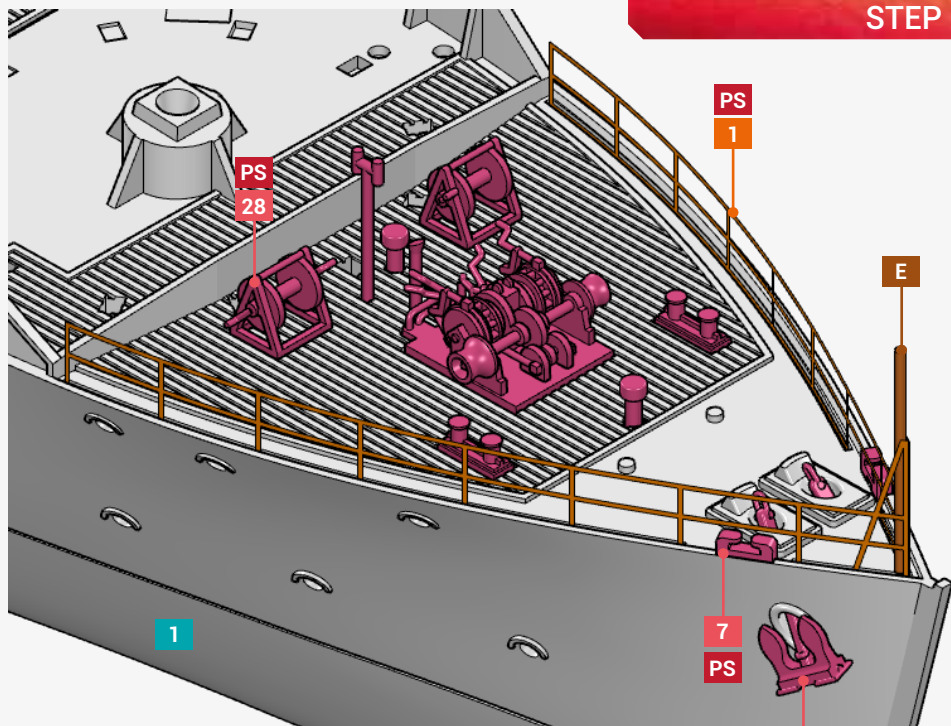
XX	RESIN PARTS
XX	3D PARTS
XX	PHOTOETCH PARTS
XX	BRASS PARTS
XX	DECALS PARTS

!	ASSEMBLY WARNING
PS	PORT & STARBOARD
P	PORT SIDE
S	STARBOARD SIDE
X	INFORMATIONS

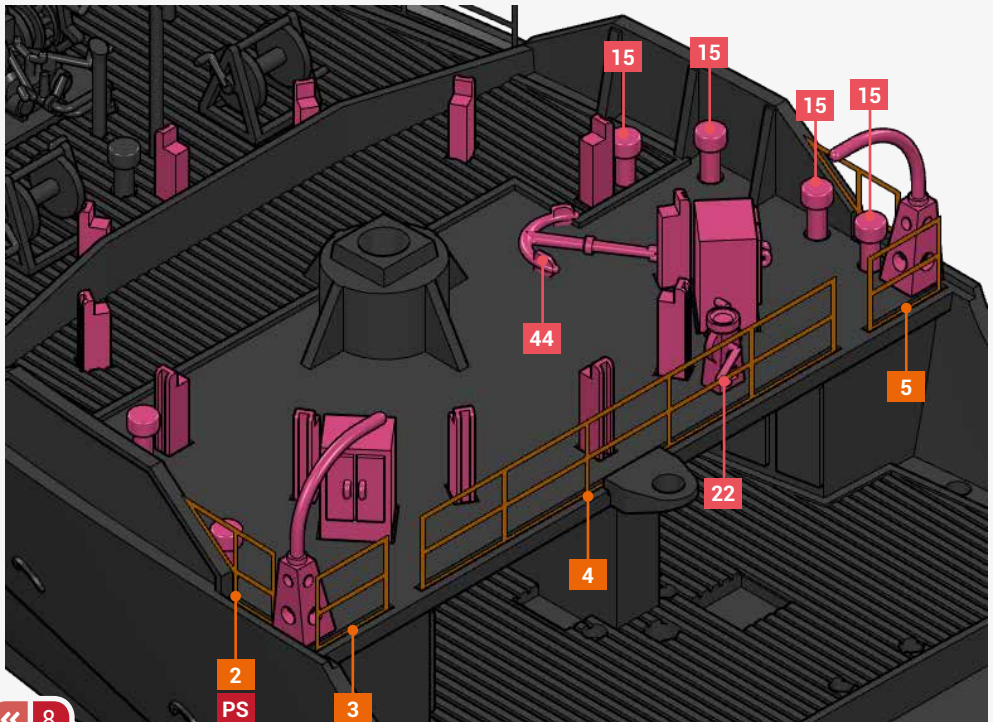
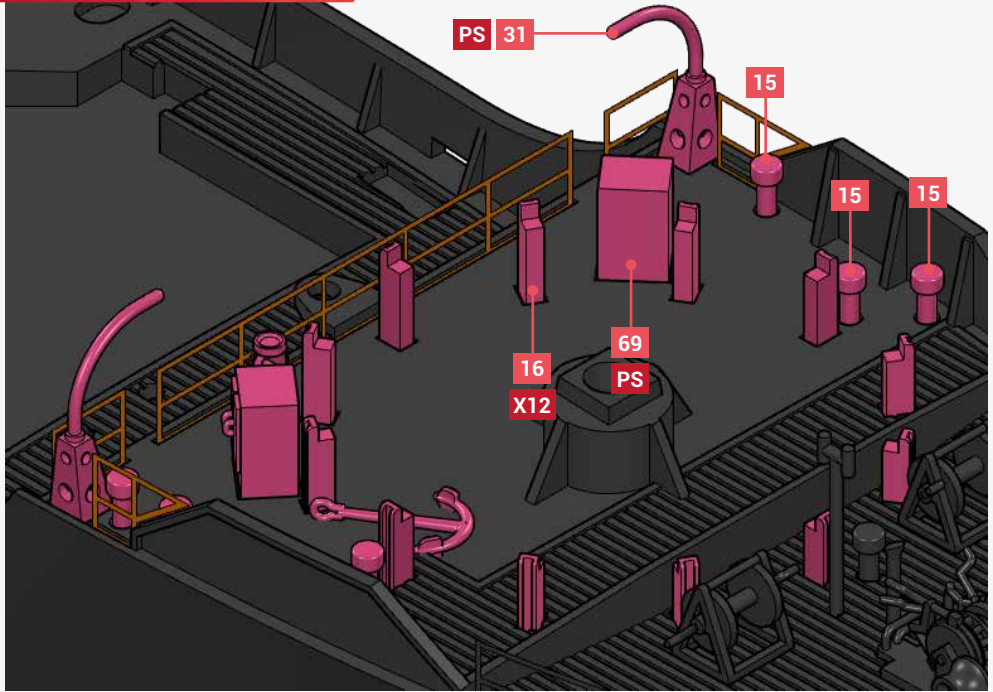
SOME PHOTOETCH AND 3D PARTS ARE PROVIDED IN EXTRA NUMBERS.

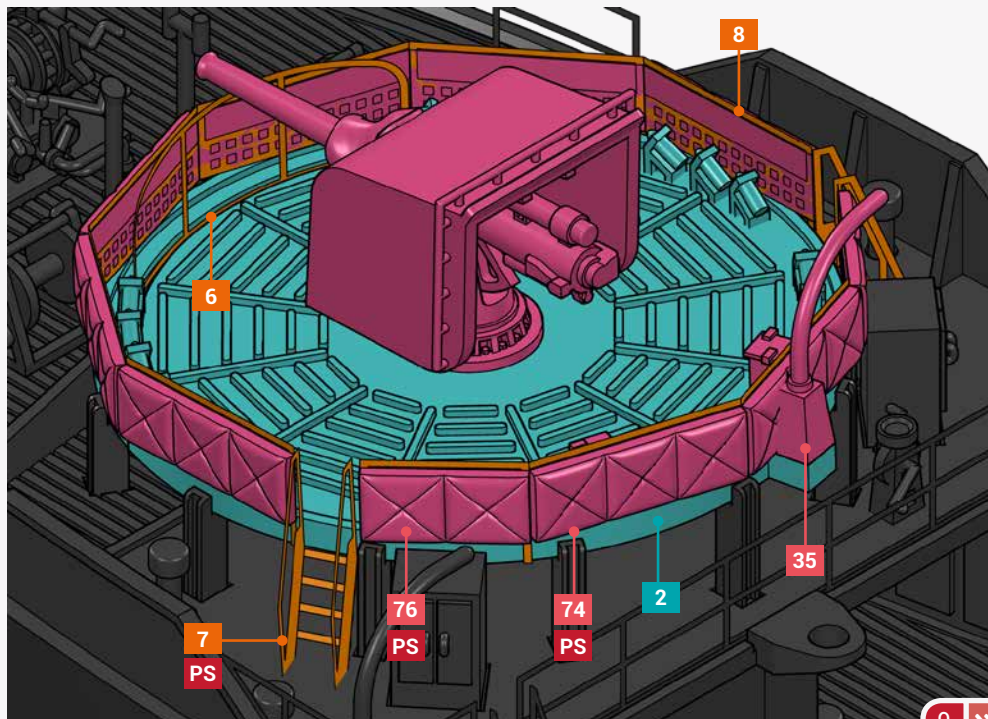
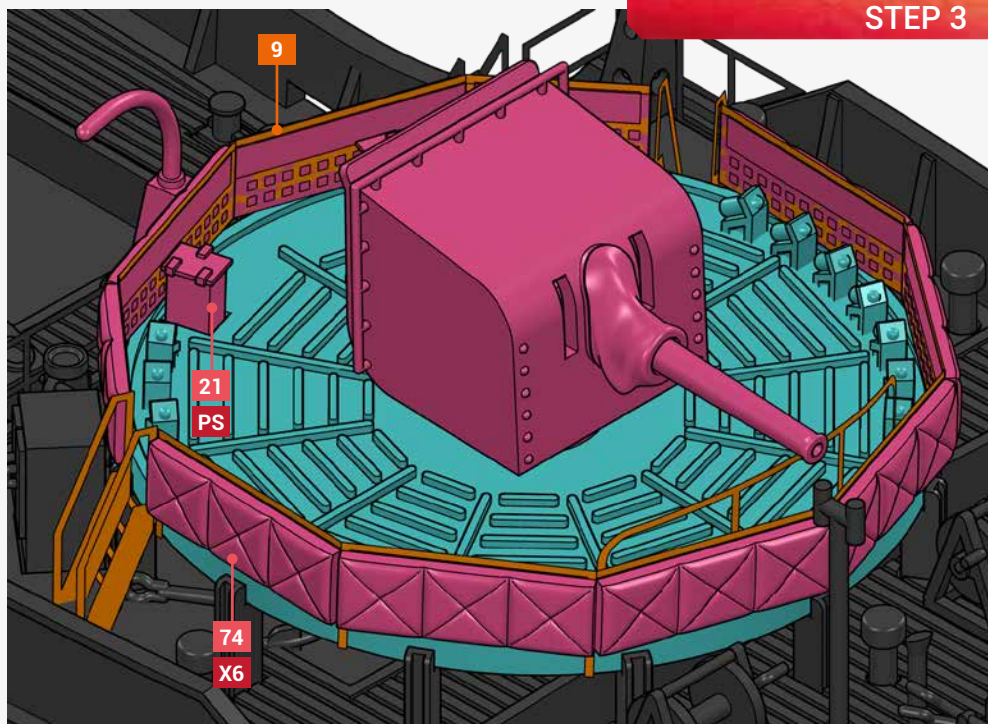
IMPORTANT ! PLEASE FULLY READ THE INSTRUCTIONS BEFORE STARTING THE BUILD !

STEP 1

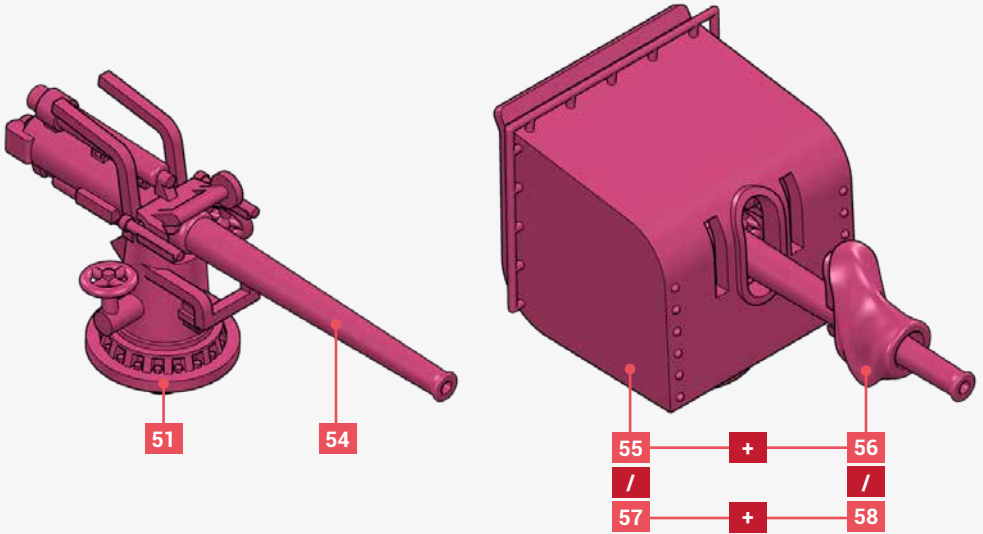


STEP 2



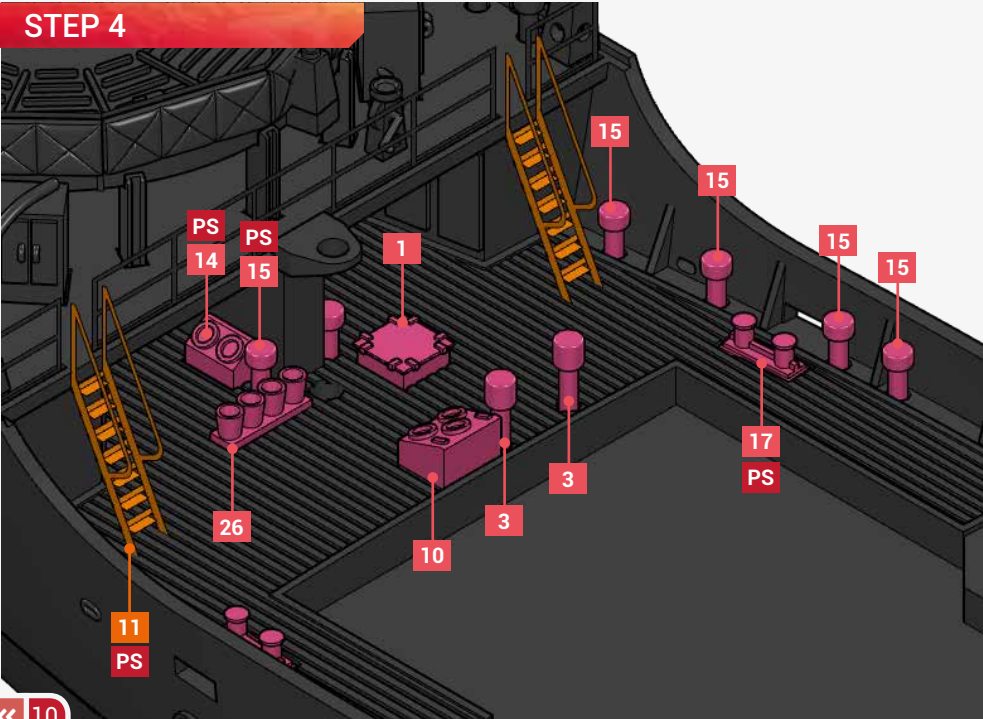


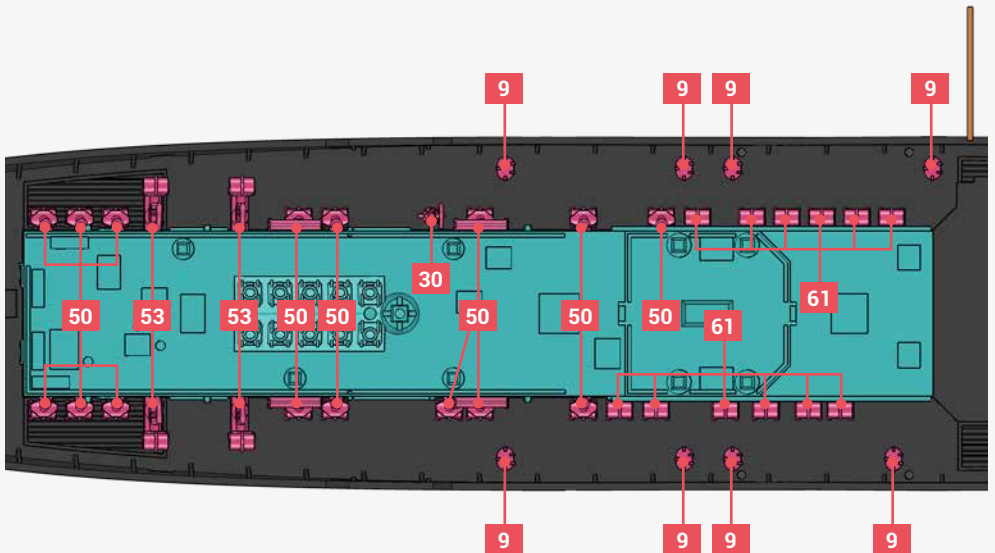
YOU CAN CHOOSE TO ADD OR NOT THE SAND BAGS AROUND THE 4' GUN TUB



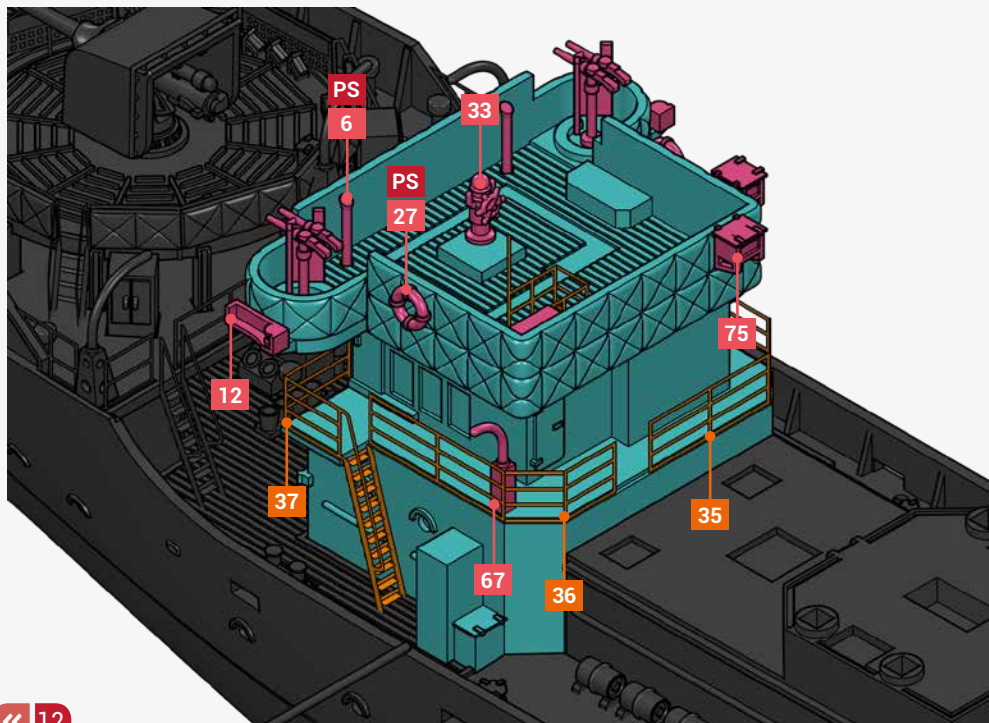
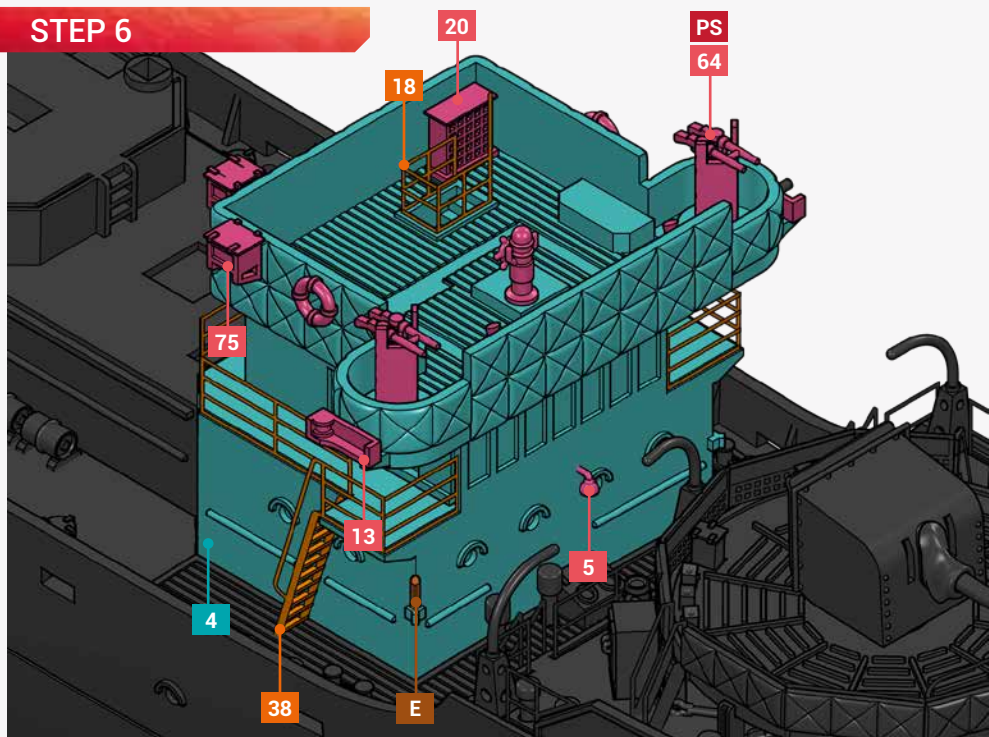
TWO VERSIONS OF THE SHIELD ARE AVAILABLE, USE THE PROPER PARTS FOR ASSEMBLY

STEP 4

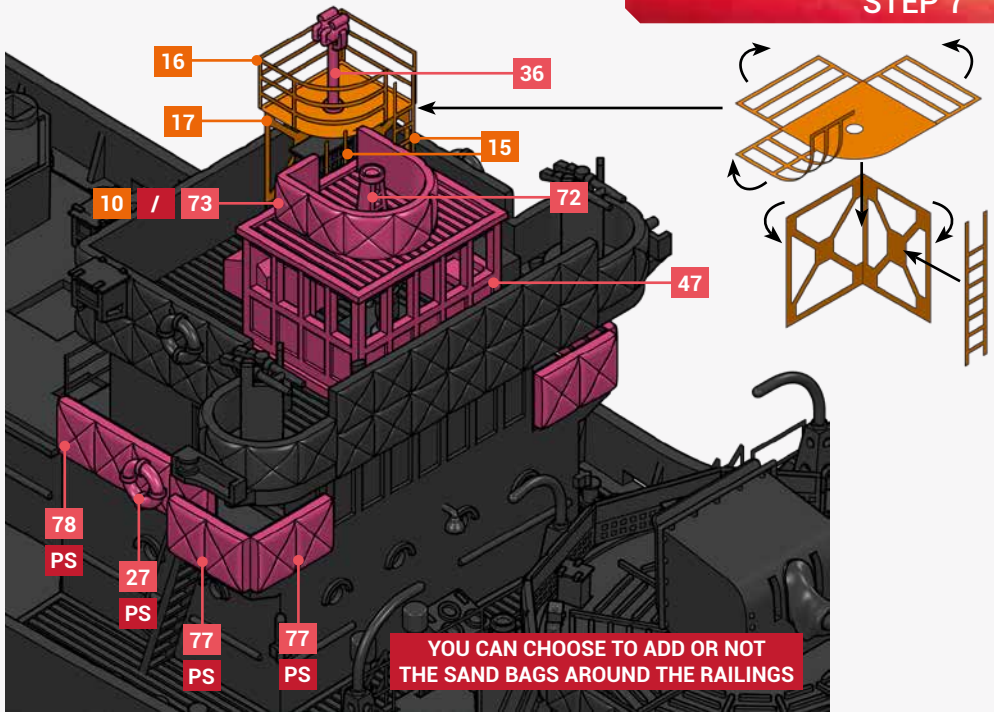




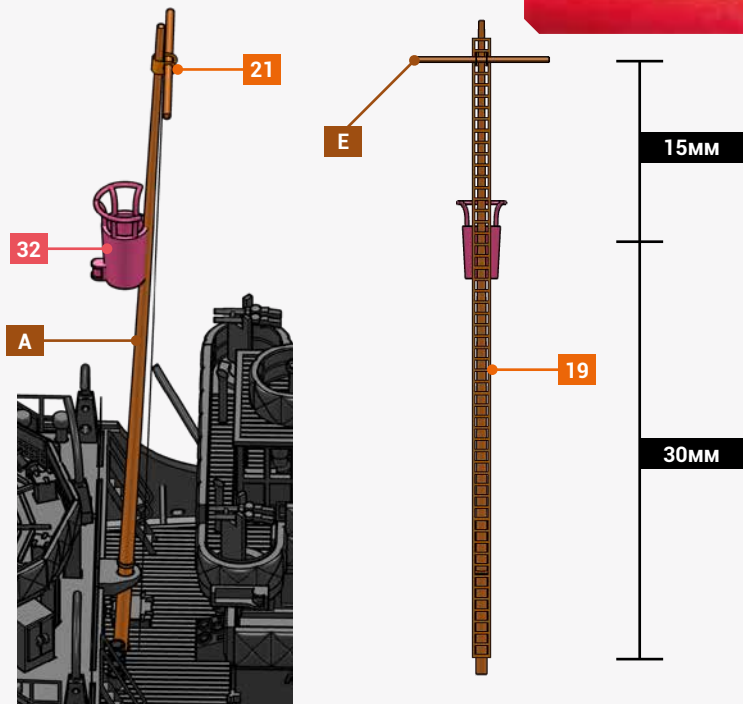
STEP 6



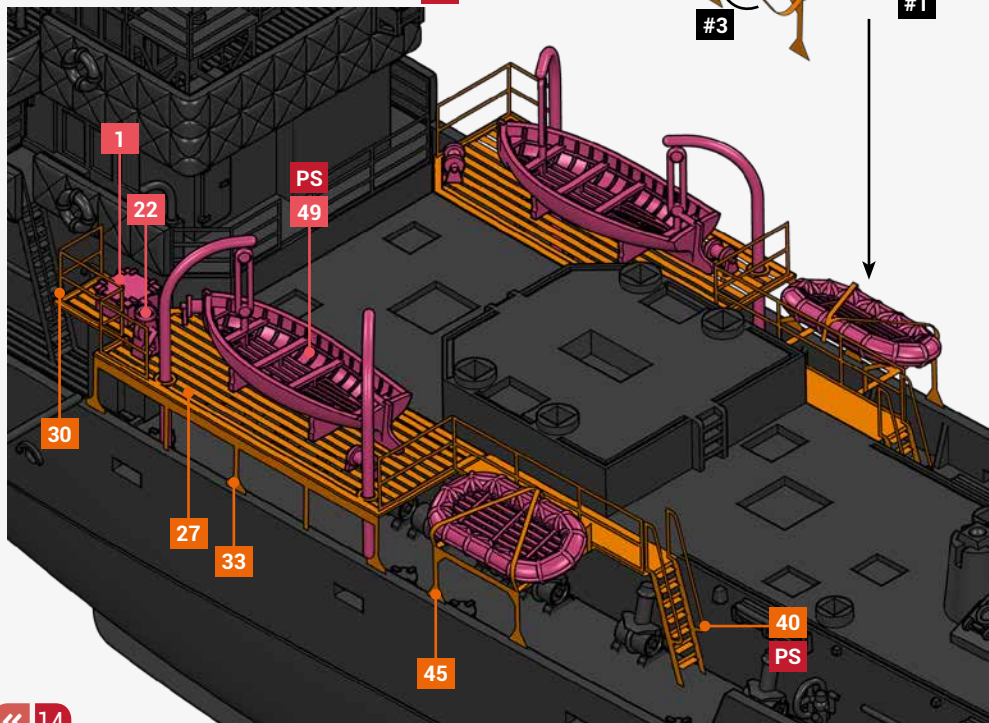
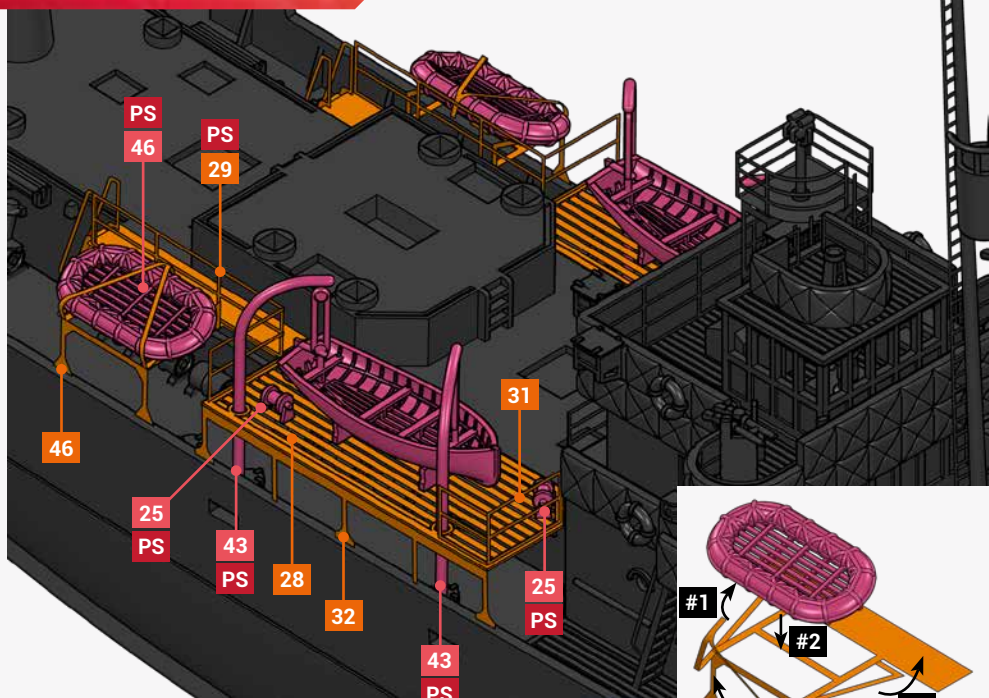
STEP 7

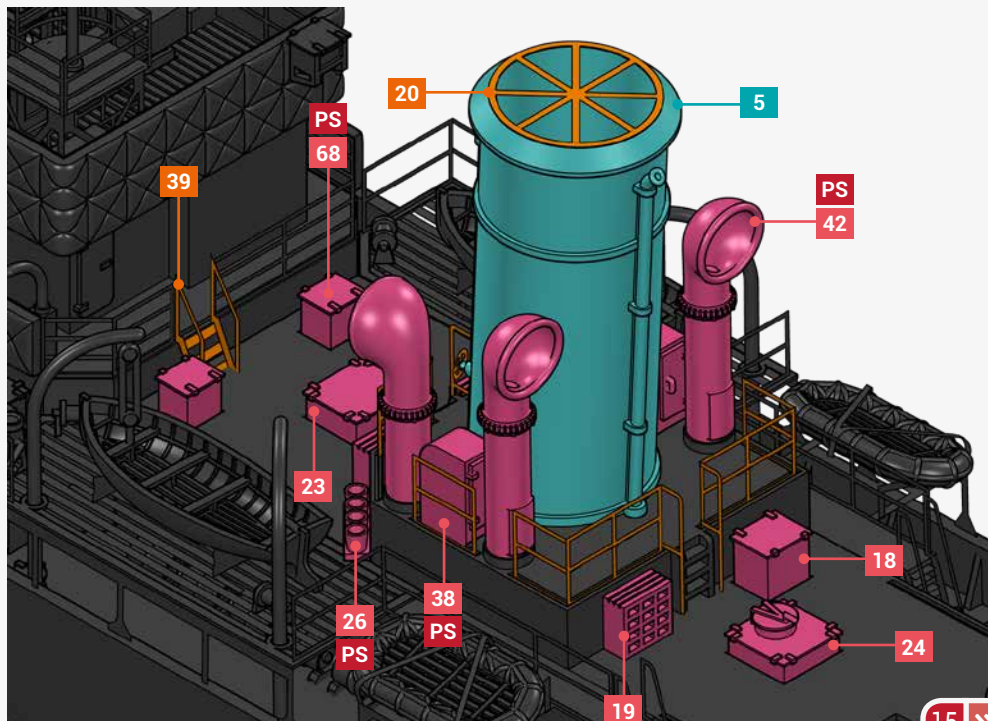
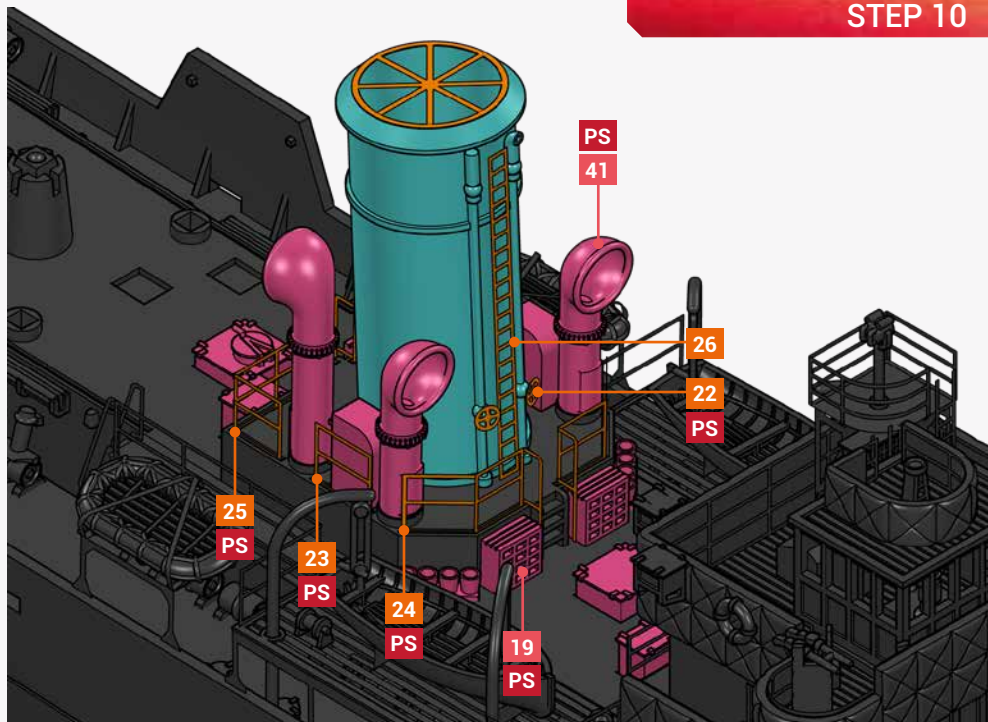


STEP 8

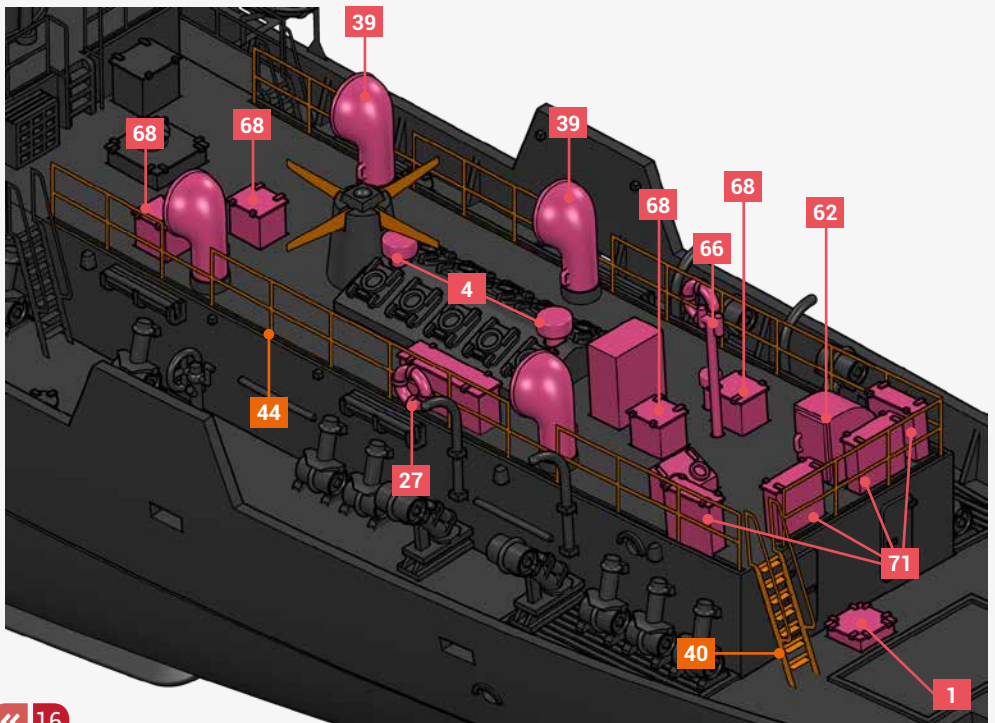
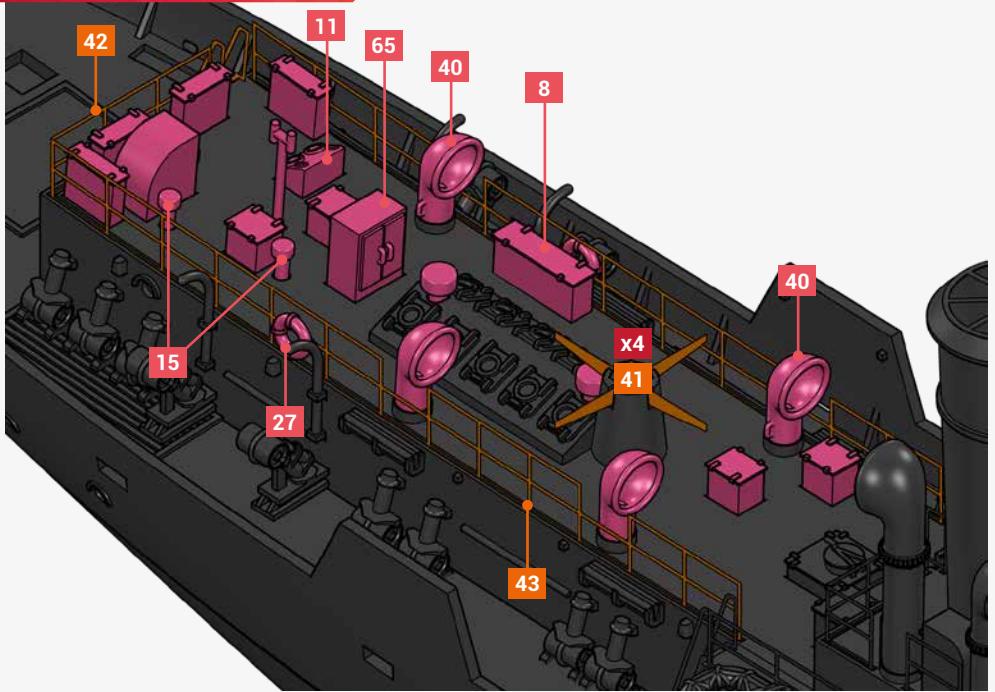


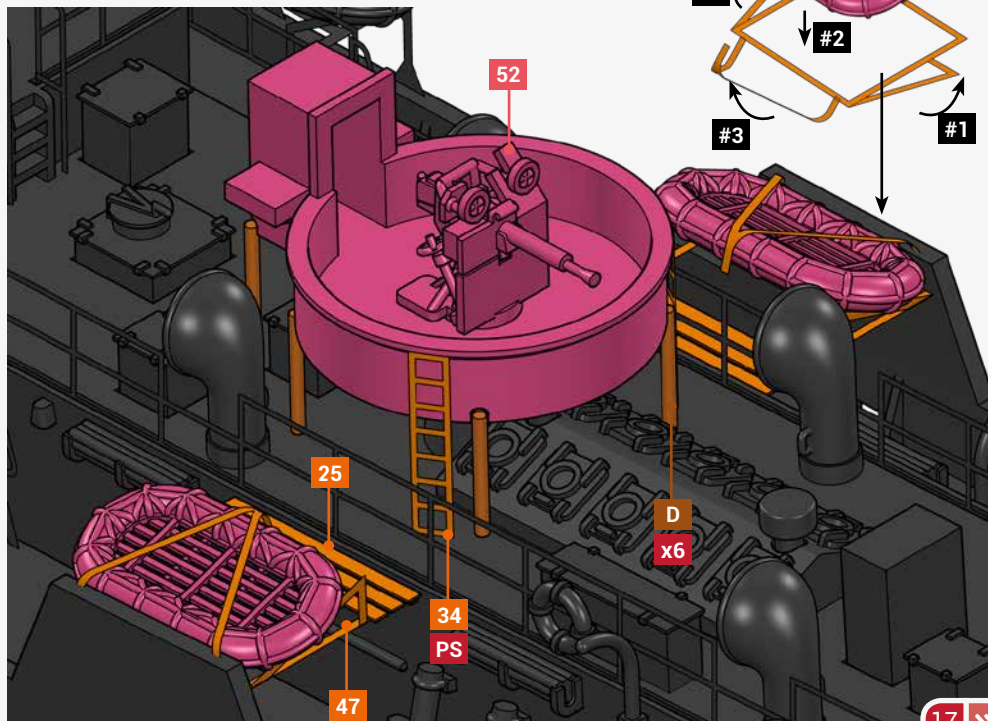
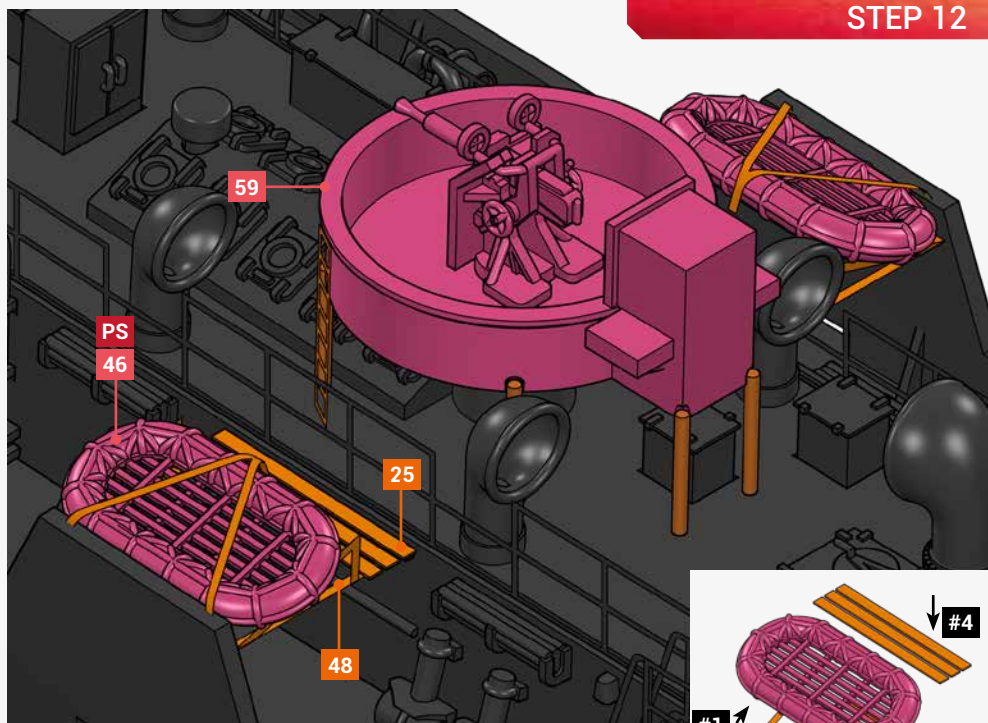
STEP 9



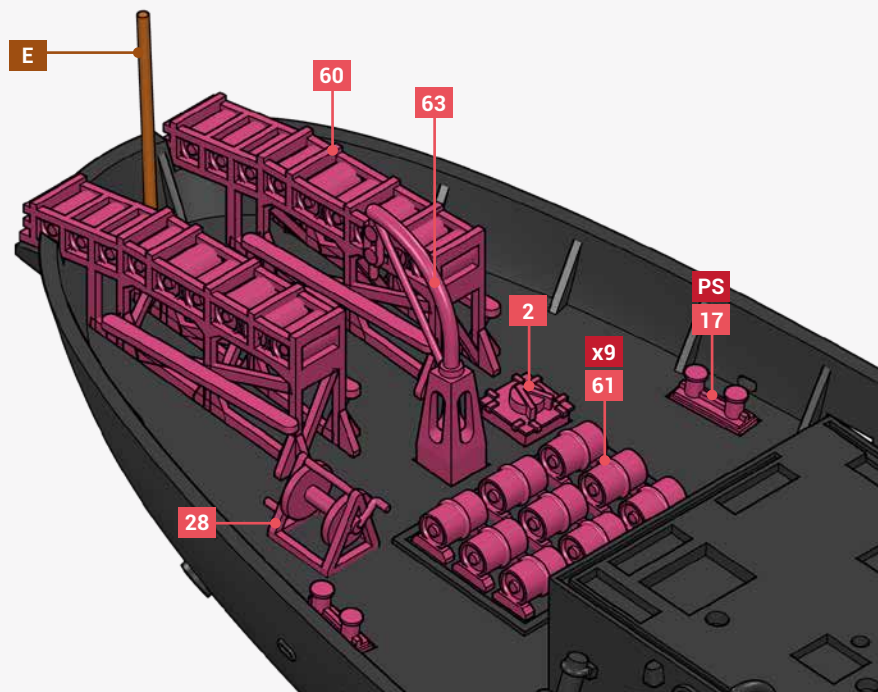


STEP 11

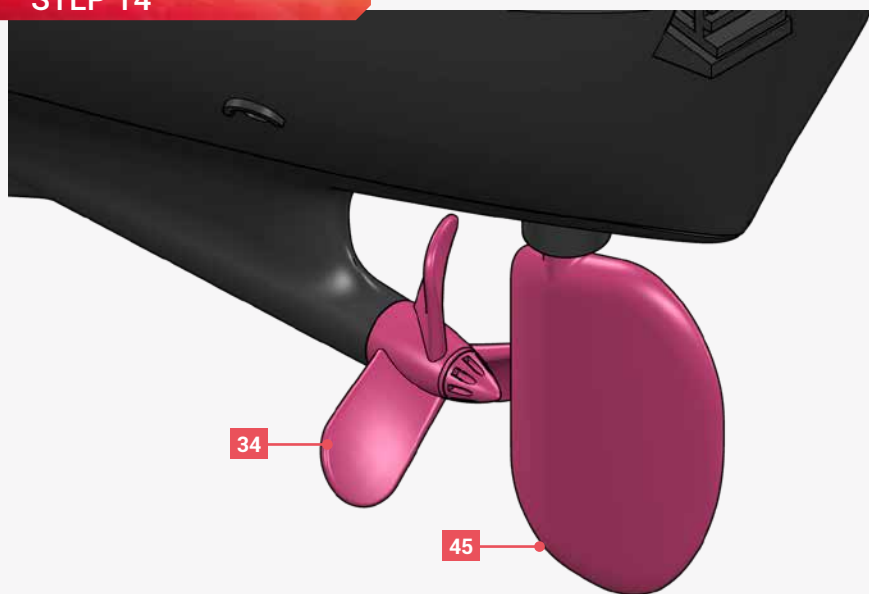


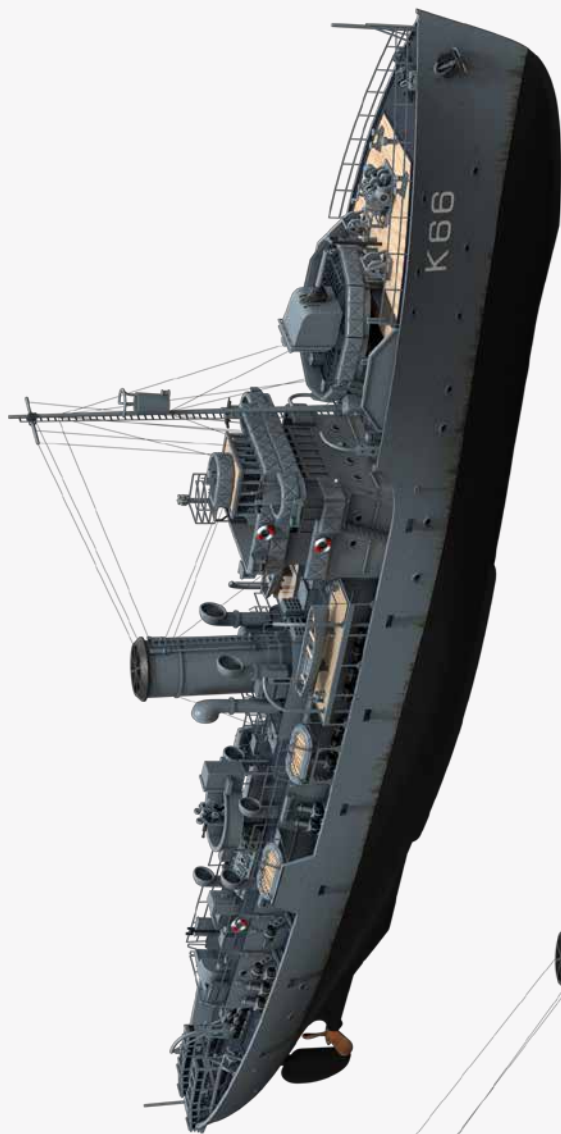


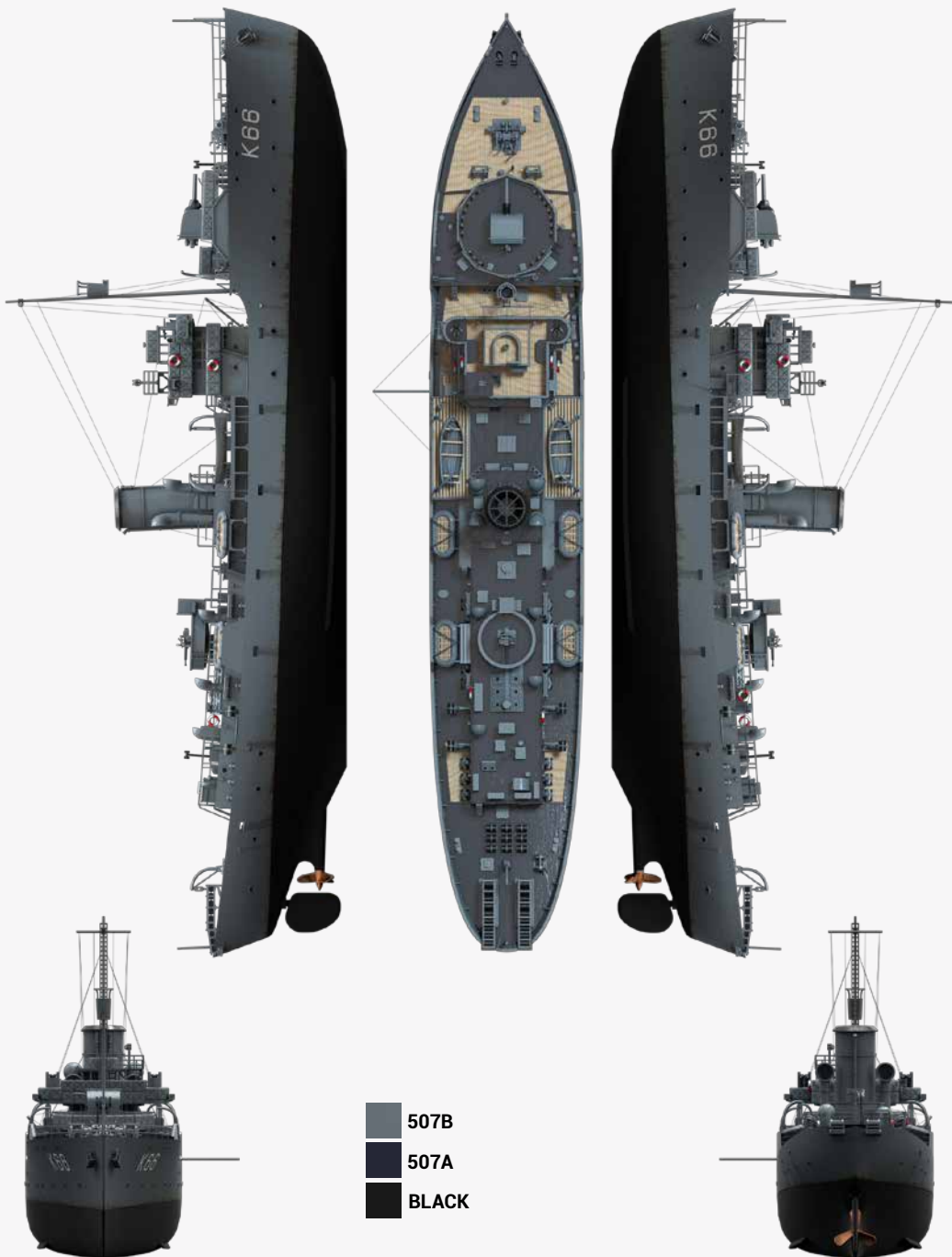
STEP 13



STEP 14







507B

507A

BLACK