



CANNON CLASS DESTROYER ESCORT BASIC FIT

About the Cannon class Destroyer Escort basic fit :

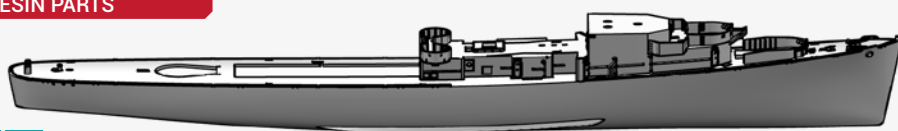
Protection of convoys crossing both the Atlantic or Pacific Oceans necessitated the design of a class of warship specialized in anti-submarine warfare. The USA developed the Destroyer Escorts, a smaller, less armed and slower unit than the fleet destroyers of the Fletcher class. Of the 507 DEs built, 72 were Cannon class ships, with the as fitted version equipped with torpedo tubes being the subject of this kit. The Cannons proved to be efficient escorts during the war, with no less than 54 transferred to navies around the world after the conflict. The last one to be decommissioned was the Rajah Humabon, PS-11 of the Philippines Navy in 2018, after 75 years of service !

À propos du Destroyer Escort classe Cannon version de base :

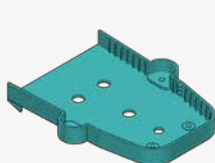
La protection des convois en Atlantique ou Pacifique nécessitait la création d'une classe de bâtiments spécialisés dans la chasse aux sous-marins. Les États-Unis développèrent les Destroyer Escorts, navires plus petits, moins rapides et plus légèrement armés que les grands destroyers de la classe Fletcher. Parmi les 507 Destroyer Escorts construits, figurent les 72 unités de la classe Cannon, dont la première version, équipée de tubes lance-torpilles est l'objet de ce kit. Ces navires escortèrent efficacement les cargos pendant le conflit, et pas moins de 54 Cannon DE furent transférés après-guerre aux marines occidentales. Le dernier à quitter le service a été le Rajah Humabon PS-11 en 2018 après soixante quinze ans d'activité !

PARTS

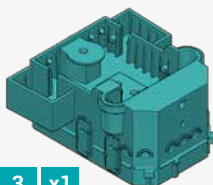
RESIN PARTS



1 x1



2 x1



3 x1



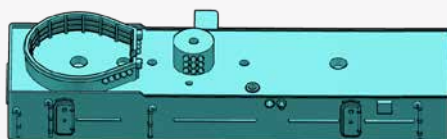
4 x1



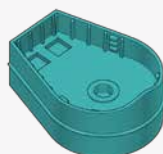
5 x1



6 x1



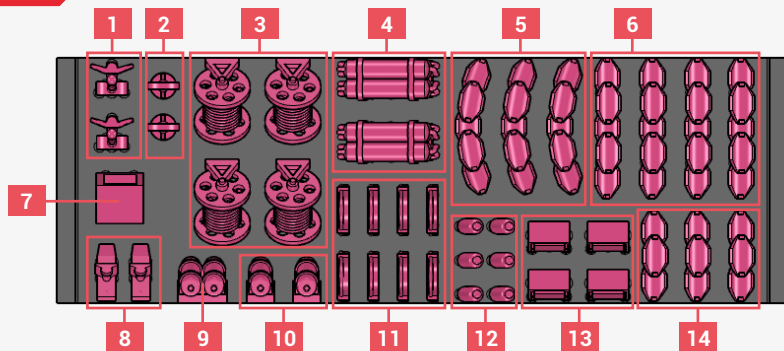
7 x1



8 x1

3D PRINTED PARTS

BAR A



1 x1



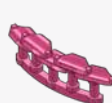
2 x1



3 x3



4 x2



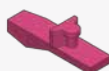
5 x2



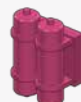
6 x3



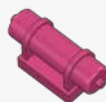
7 x1



8 x1



9 x1



10 x2



11 x7



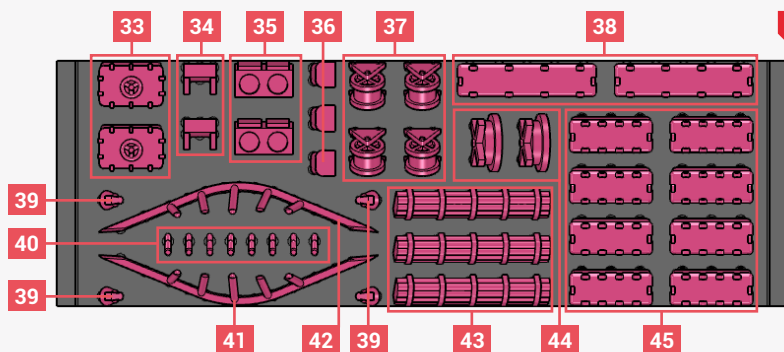
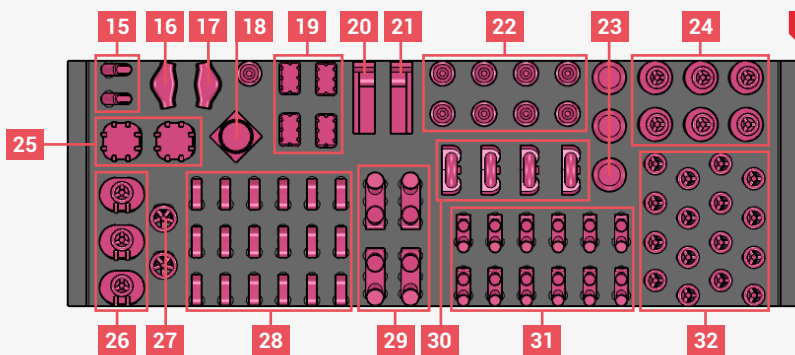
12 x4



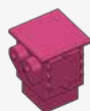
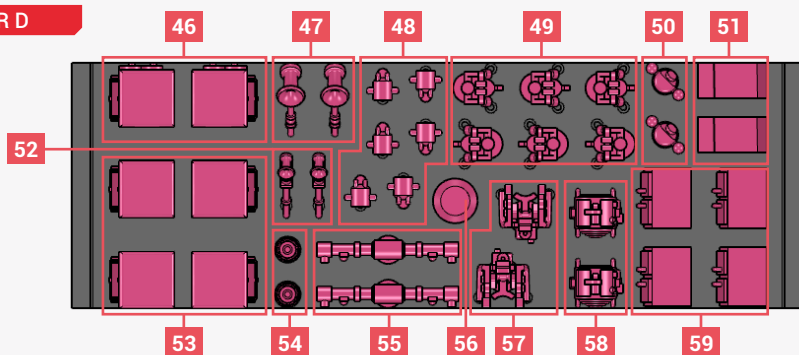
13 x3



14 x2



BAR D



46 x2



47 x1



48 x2



49 x4



50 x1



51 x1



52 x1



53 x4



54 x1



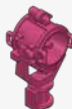
55 x1



56 x1



57 x1

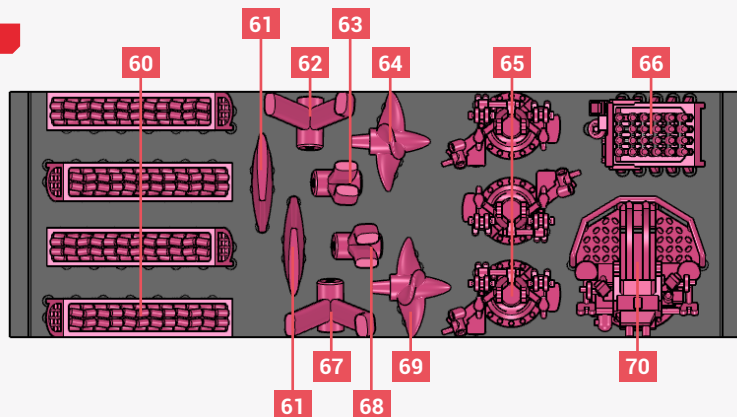


58 x2



59 x4

BAR E



60 x4



61 x2



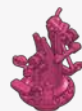
62 x1



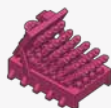
63 x1



64 x1



65 x3



66 x1



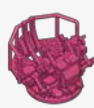
67 x1



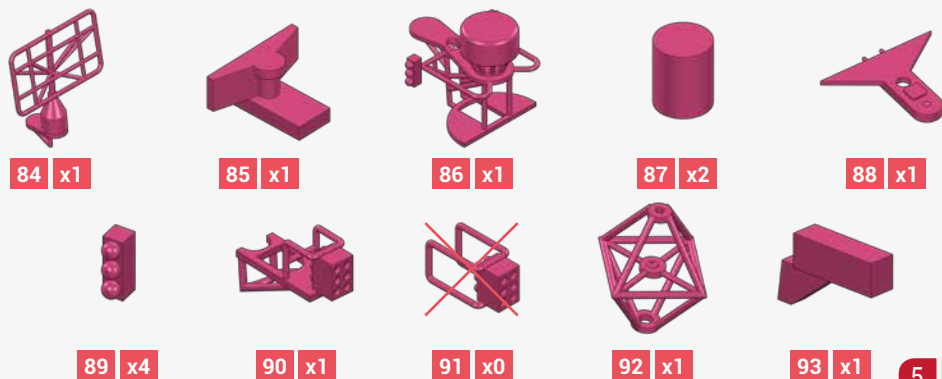
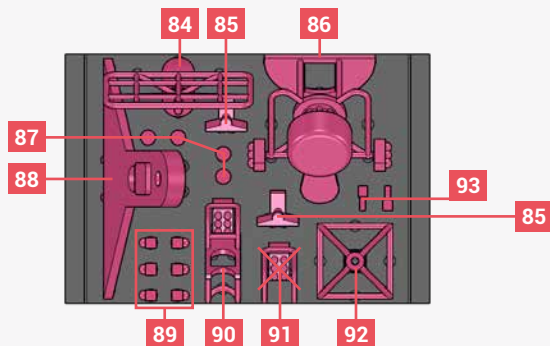
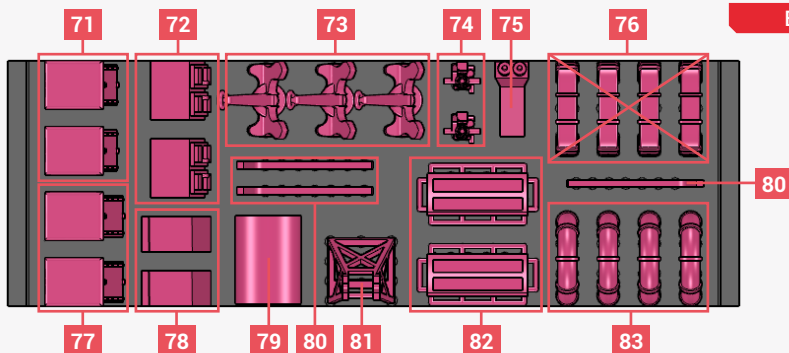
68 x1



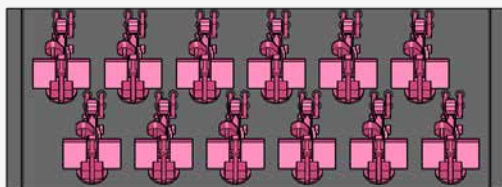
69 x1



70 x1

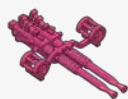
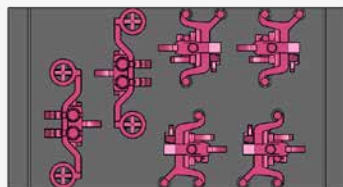


BAR H



94 x8

BAR I

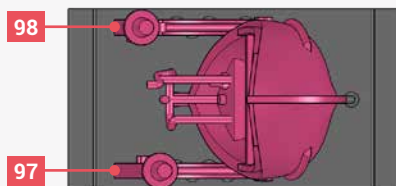


95 x1



96 x3

BAR J



97 x1



98 x1

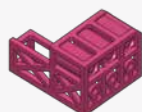


99 x1

BAR K

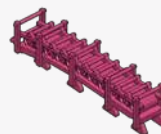
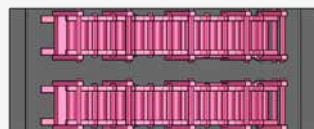


100 x8



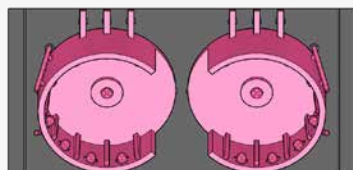
101 x8

BAR L



102 x2

BAR M

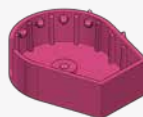
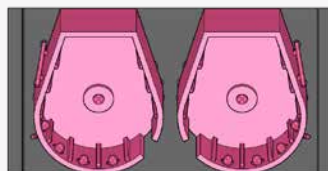


103 x1



104 x1

BAR N

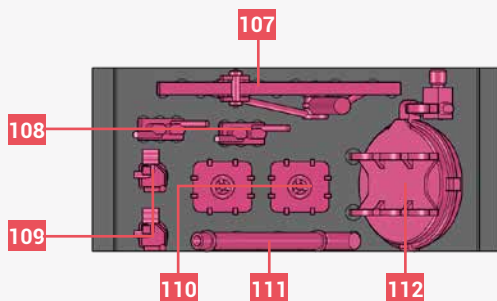


105 x1



106 x1

BAR O



107 x1



108 x1



109 x1



110 x1

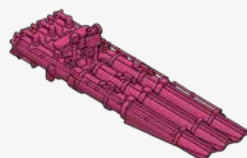
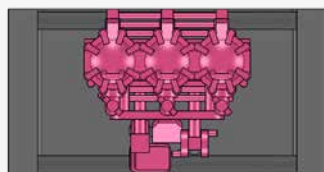


111 x1



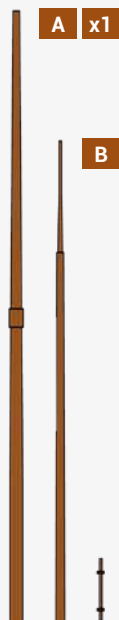
112 x1

BAR P



113 x1

BRASS PARTS



A x1

B x1

D	x1	Ø=0.3mm L=8mm
E	x2	Ø=0.4mm L=14mm
F	x1	Ø=0.4mm L=16.5mm
G	x2	Ø=0.4mm L=18mm
H	x1	Ø=0.6mm L=13mm
I	x2	Ø=1mm L=15.5mm
J	x2	Ø=1mm L=24mm

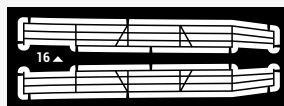
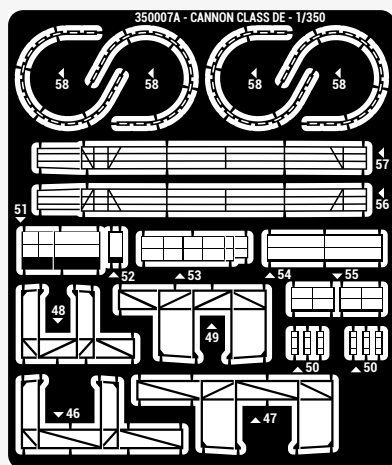
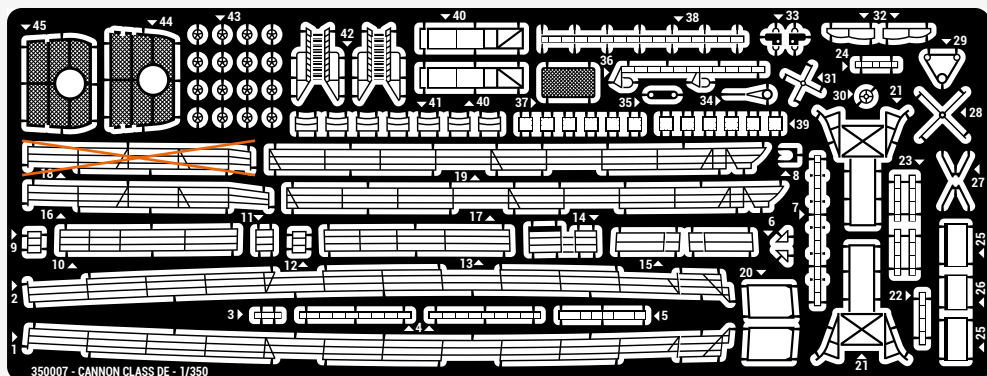


C x2

DECALS

0 0 0 0 0 0 0
1 1 1 1 1 1 1
2 2 2 2 2 2 2
3 3 3 3 3 3 3
4 4 4 4 4 4 4
5 5 5 5 5 5 5
6 6 6 6 6 6 6
7 7 7 7 7 7 7
8 8 8 8 8 8 8
9 9 9 9 9 9 9

BRASS PARTS



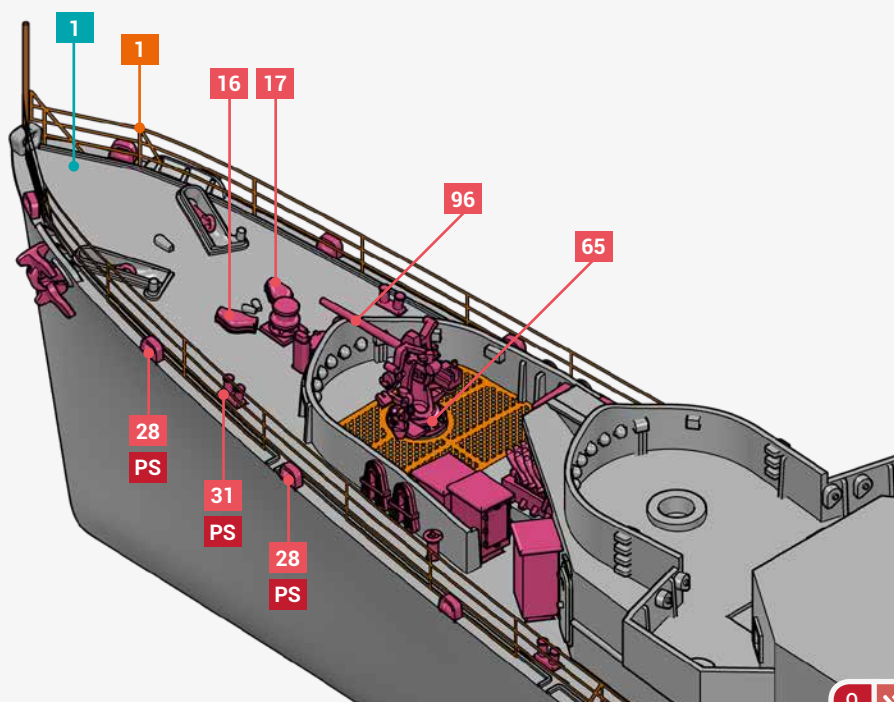
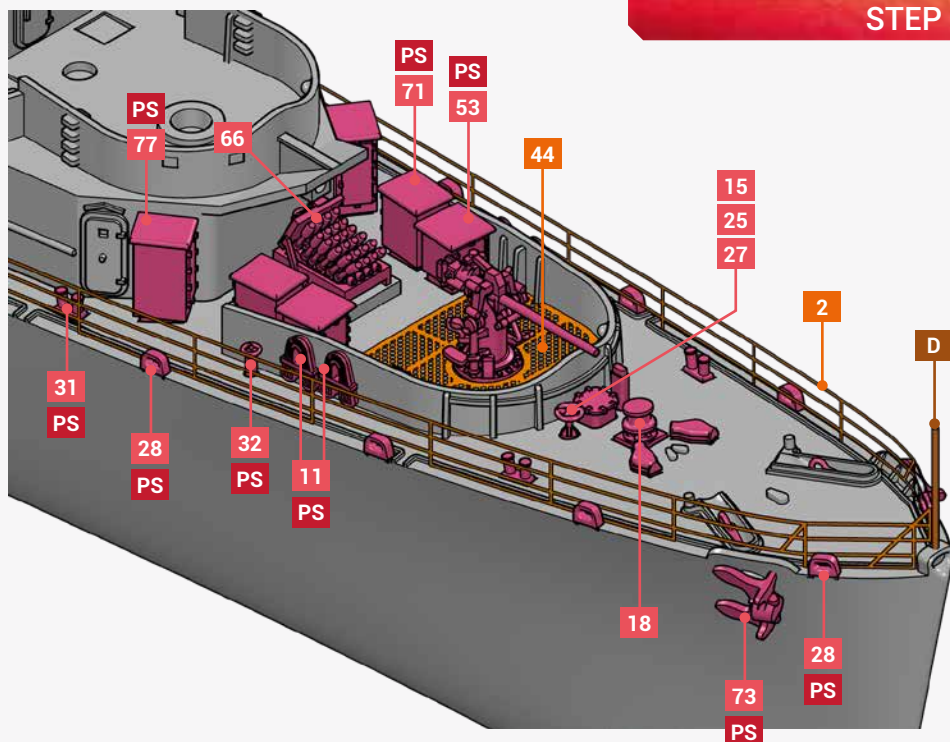
ASSEMBLY NOTES

XX	RESIN PARTS
XX	3D PARTS
XX	PHOTOETCH PARTS
XX	BRASS PARTS
XX	DECALS PARTS

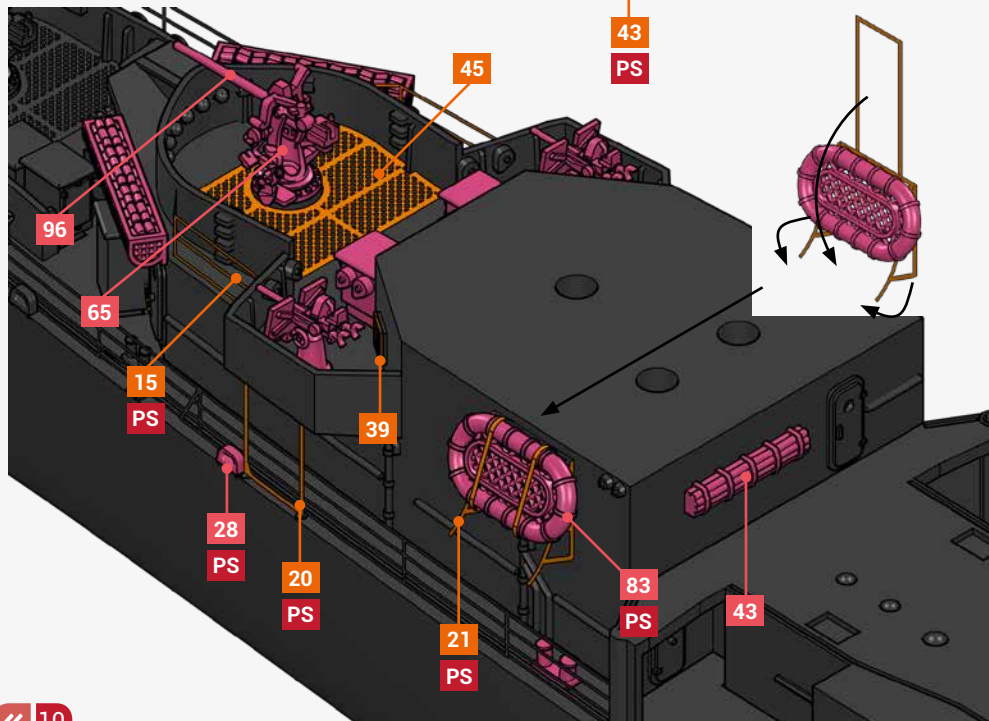
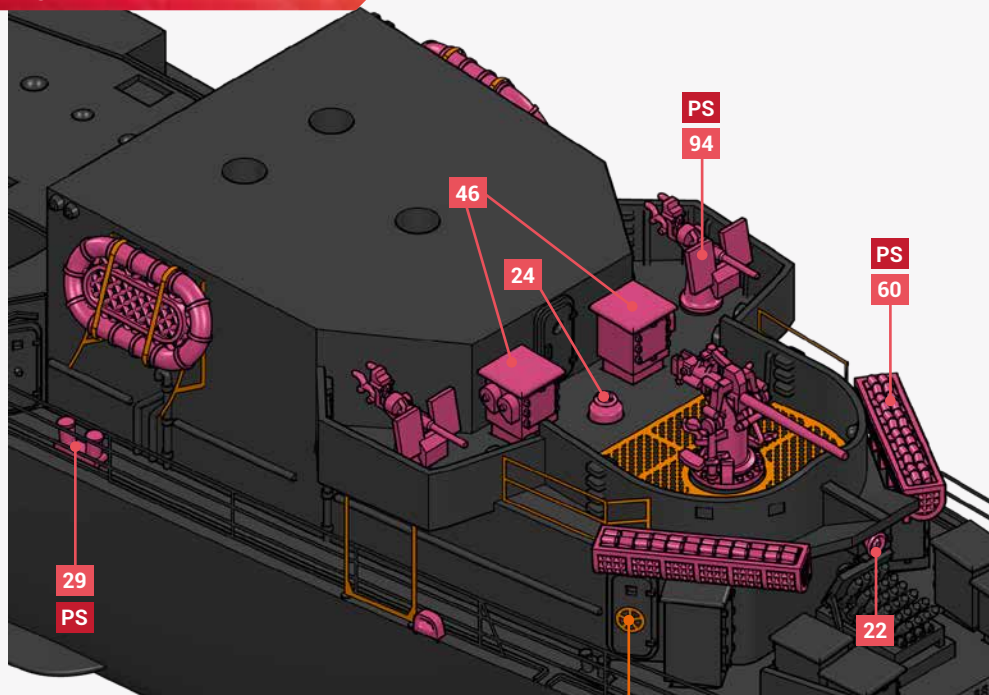
!	ASSEMBLY WARNING
PS	PORT & STARBOARD
P	PORT SIDE
S	STARBOARD SIDE
X	INFORMATIONS

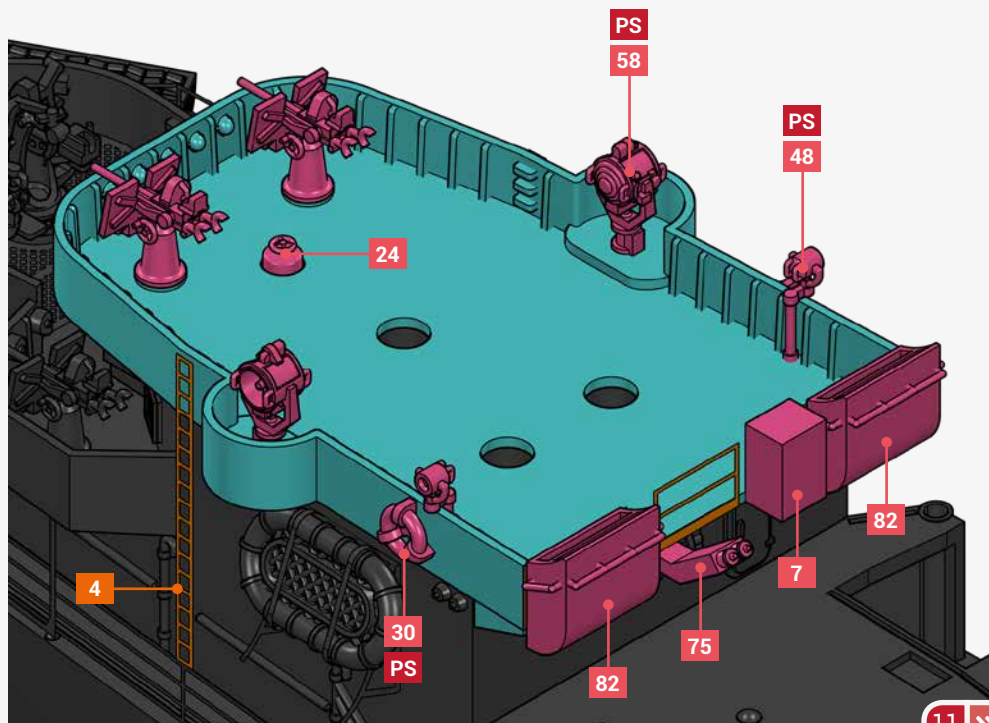
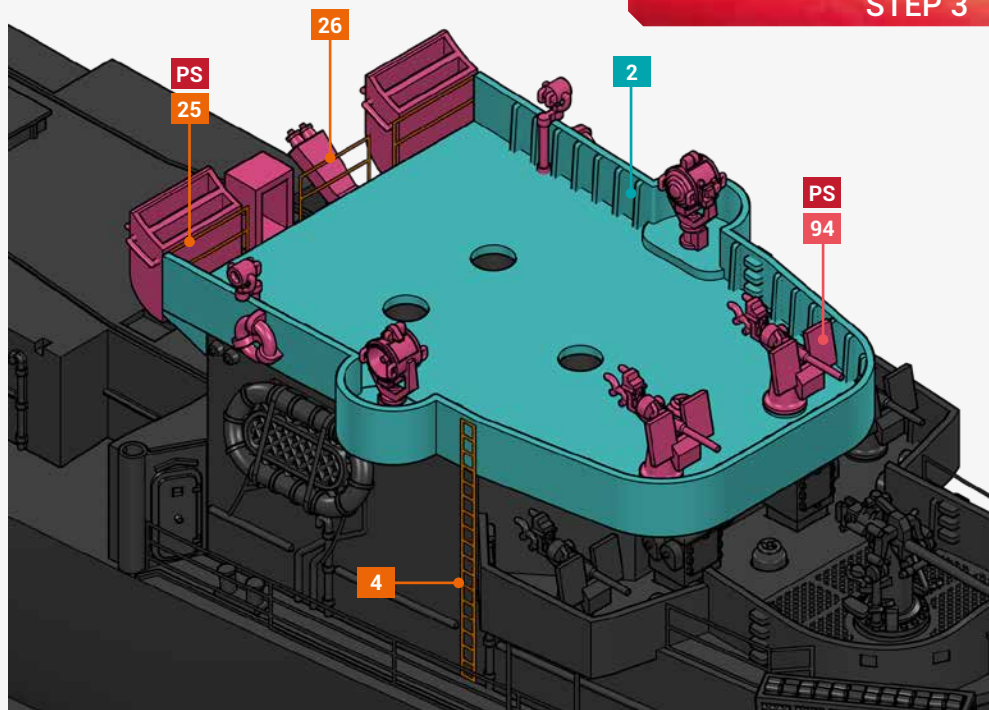
SOME PHOTOETCH AND 3D PARTS ARE PROVIDED IN EXTRA NUMBERS.

IMPORTANT ! PLEASE FULLY READ THE INSTRUCTIONS BEFORE STARTING THE BUILD !

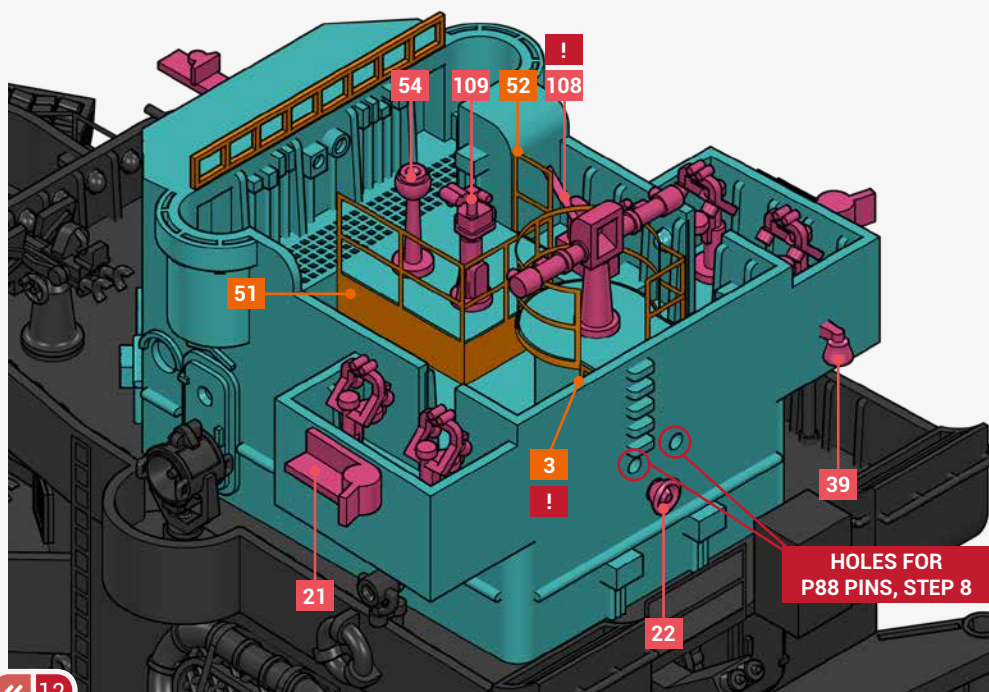
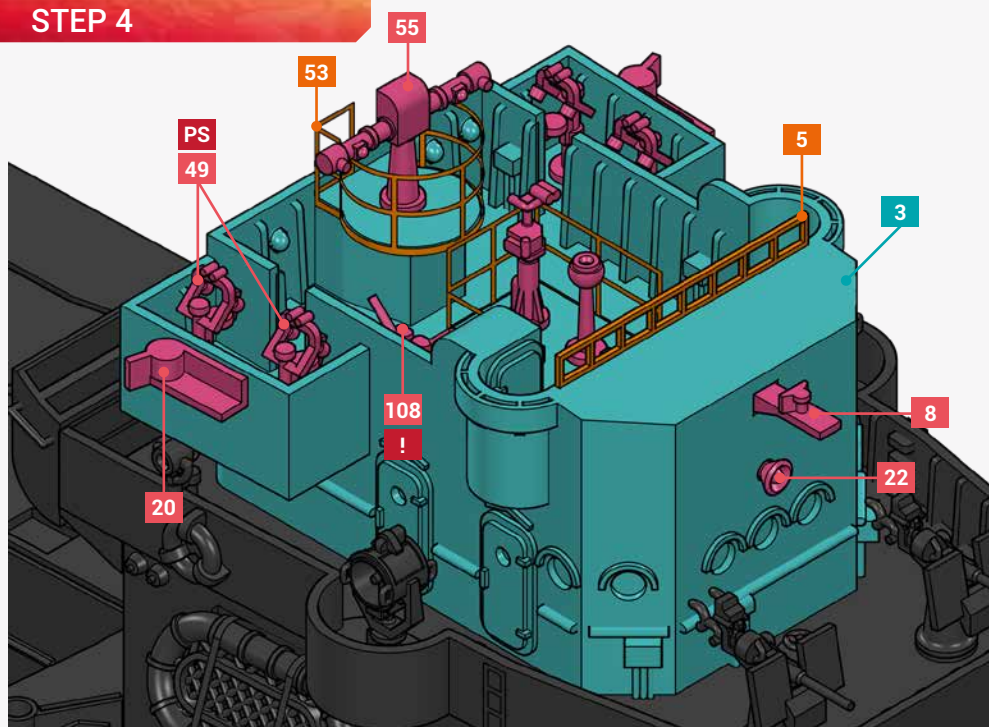


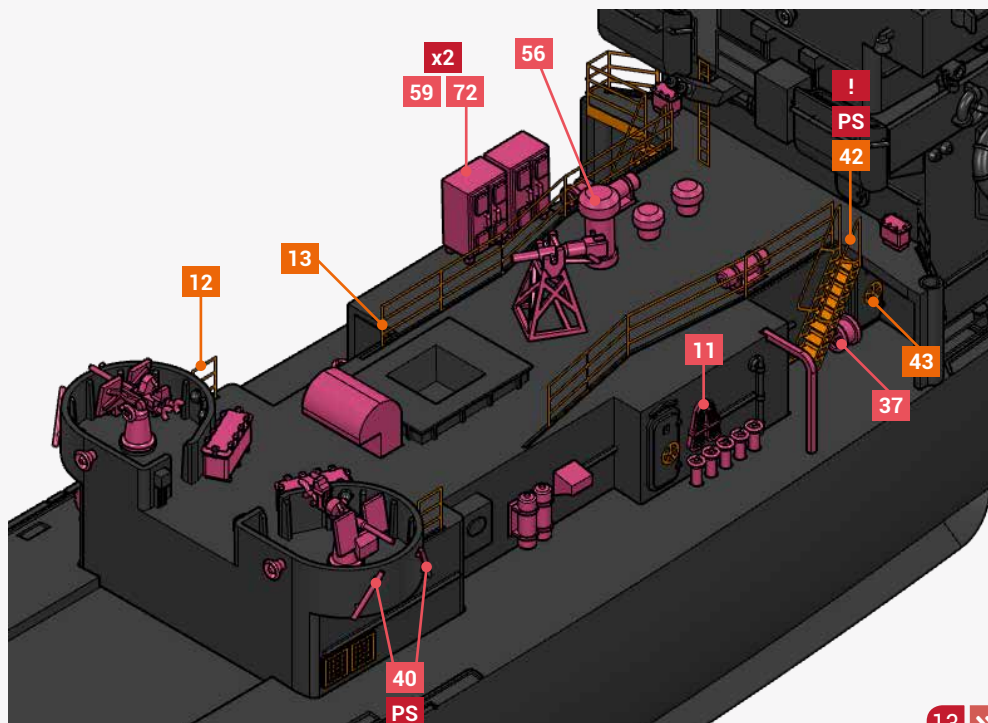
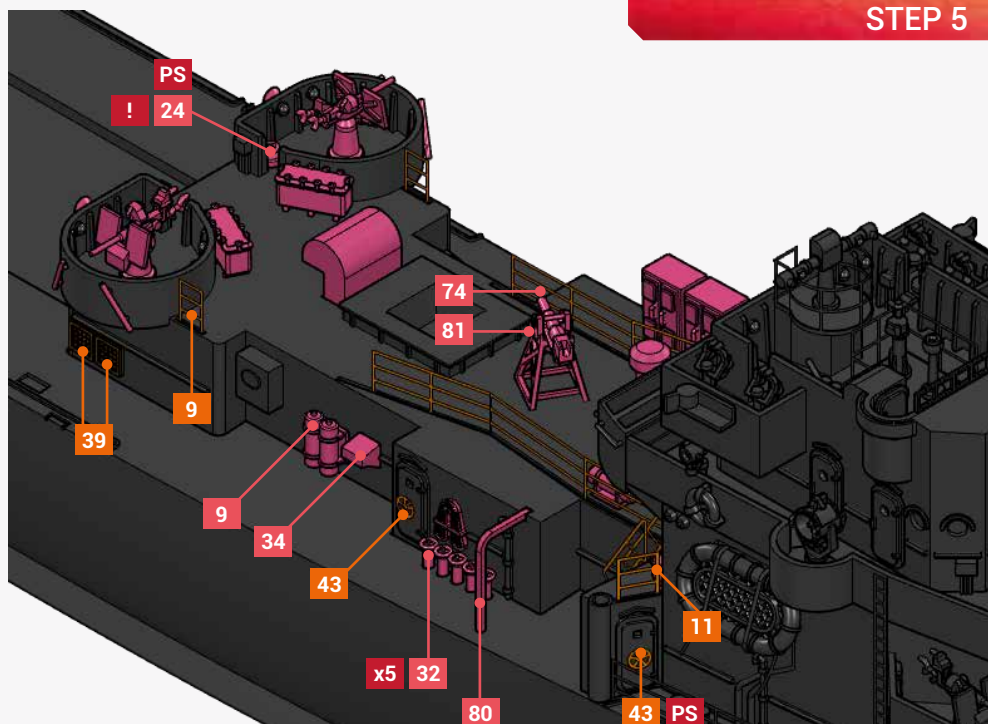
STEP 2

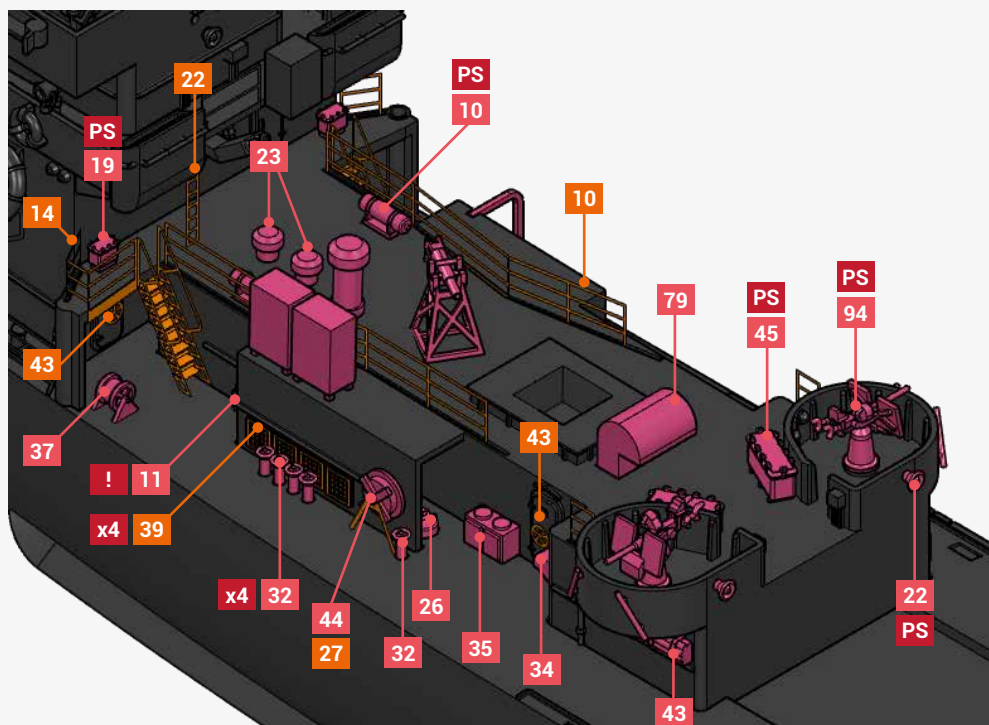




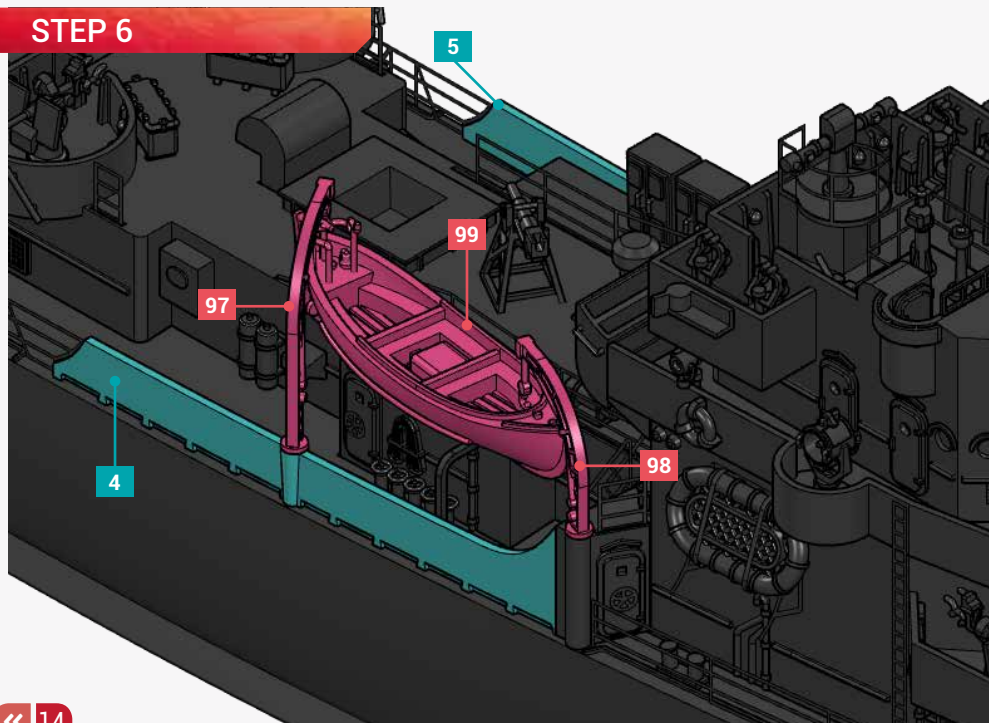
STEP 4



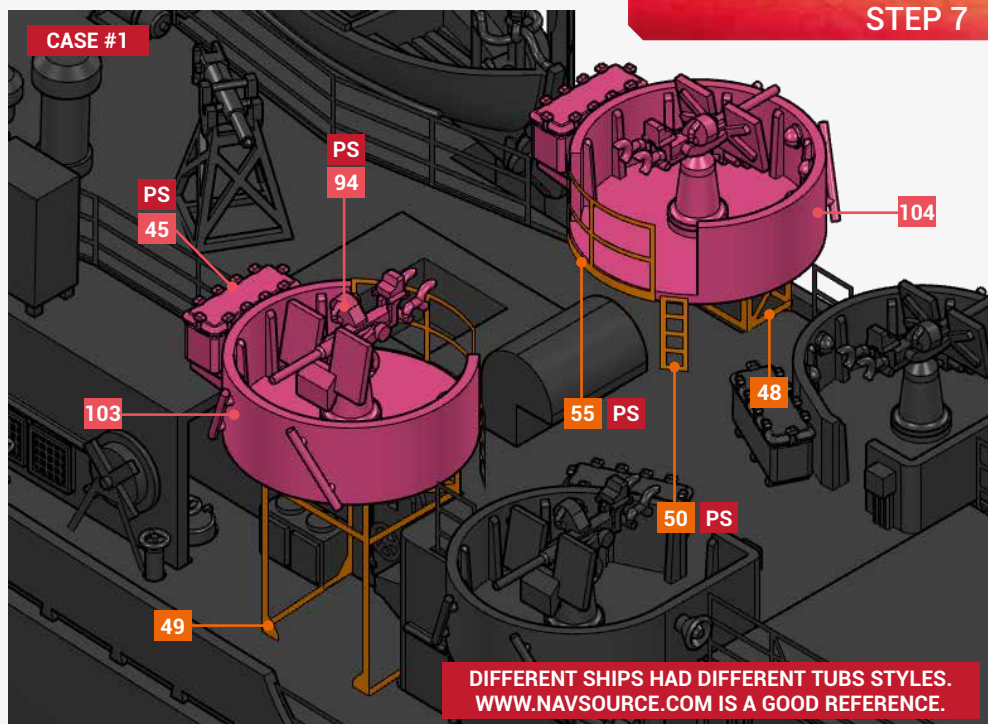




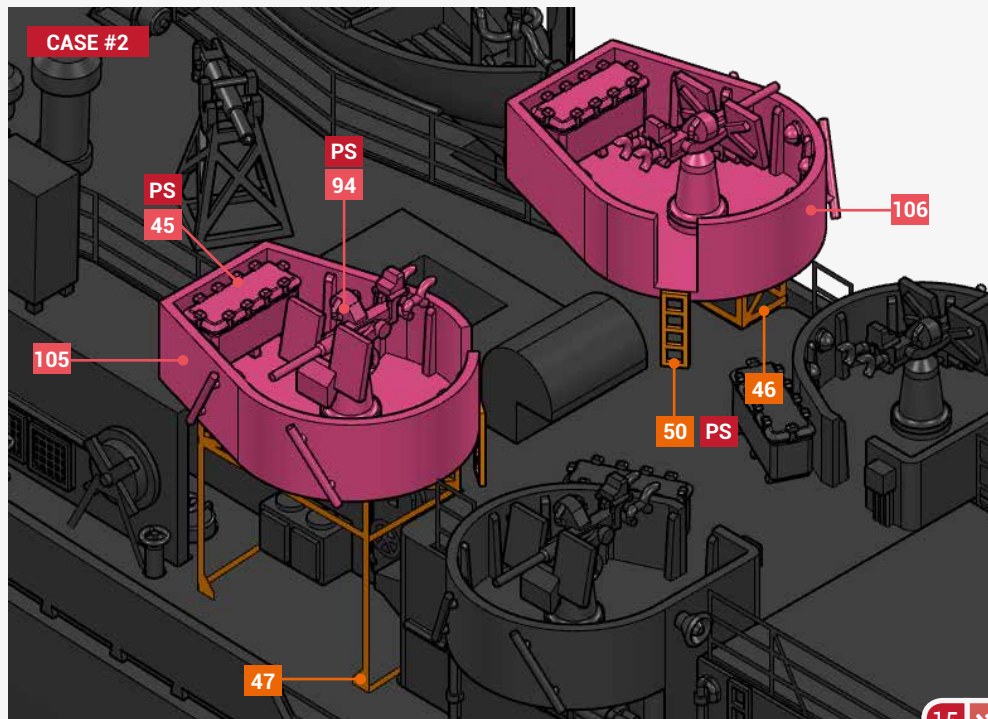
STEP 6



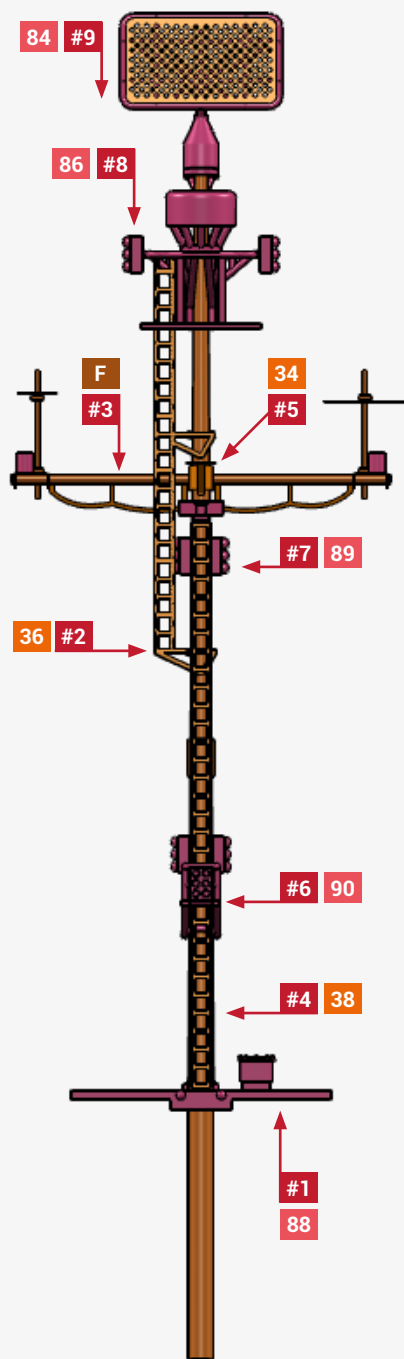
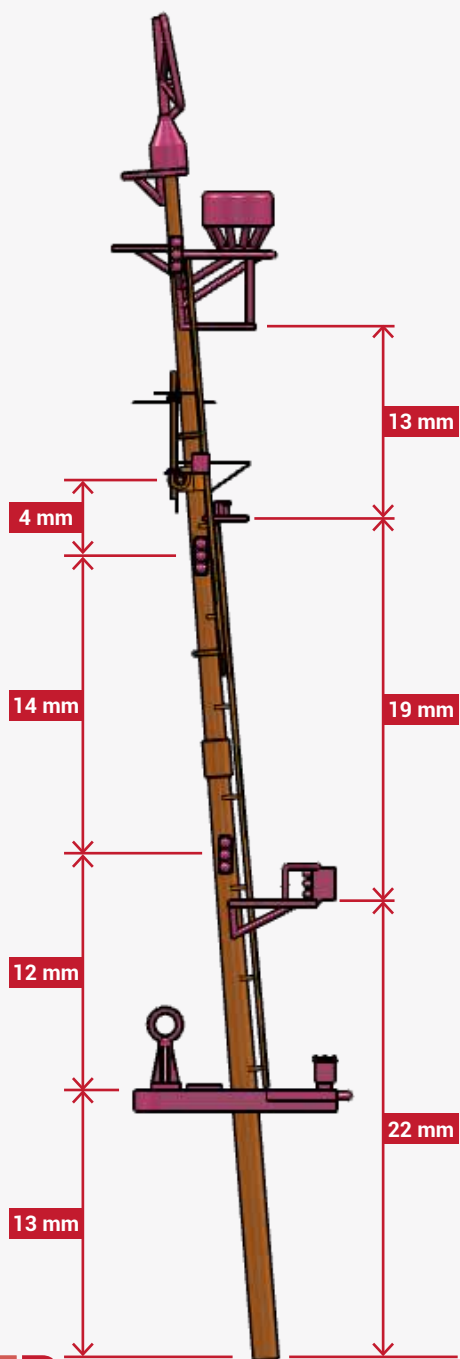
CASE #1



CASE #2



STEP 8

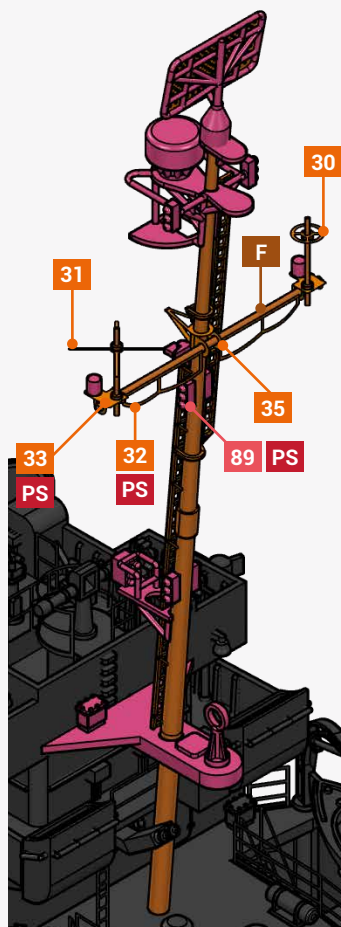
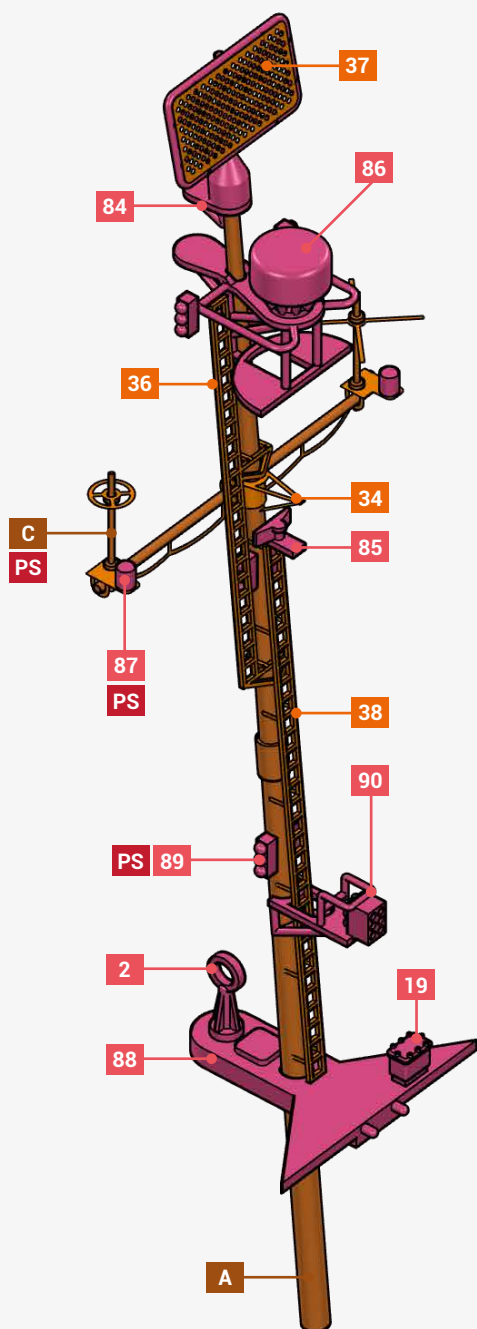


-1 IT IS VERY IMPORTANT TO RESPECT THE MEASURES GIVEN IN THE NOTICE, IF NOT MAST COULD NOT PROPERLY SIT ON THE DECK.

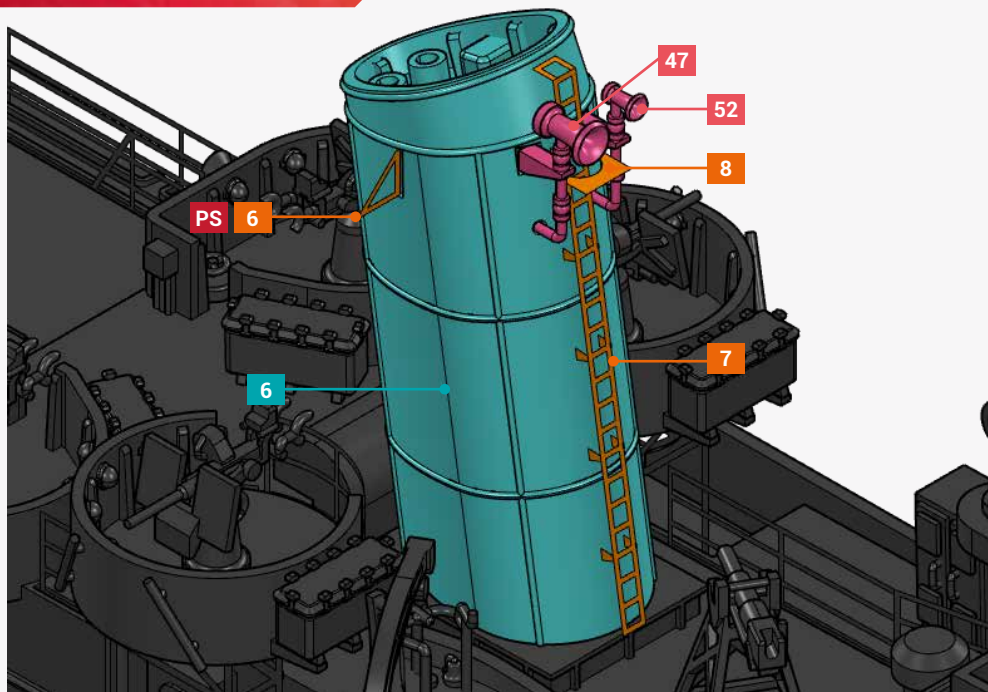
-2 FIRST, CEMENT RESIN PART 88 ON THE BRIDGE AND LET IT DRY FOR AT LEAST 24 HOURS. PART IS PARALLEL TO THE DECK.

-3 INSERT LADDER PE36 BY THE TOP, FOLD PE PART 35 IN U (SAME DIAMETER AS THE MAST) AND CEMENT IN PLACE. THEN ASSEMBLE ALL YARDARM PARTS, AND CEMENT LADDER PE36 IN PLACE. CEMENT PE LADDER 38, AND ADD ALL THE RESIN PARTS TO THE MAST. AT THIS STAGE OFF THE ASSEMBLY MAST COULD BE PUT IN ITS DEFINITIVE PLACE ON THE HULL.

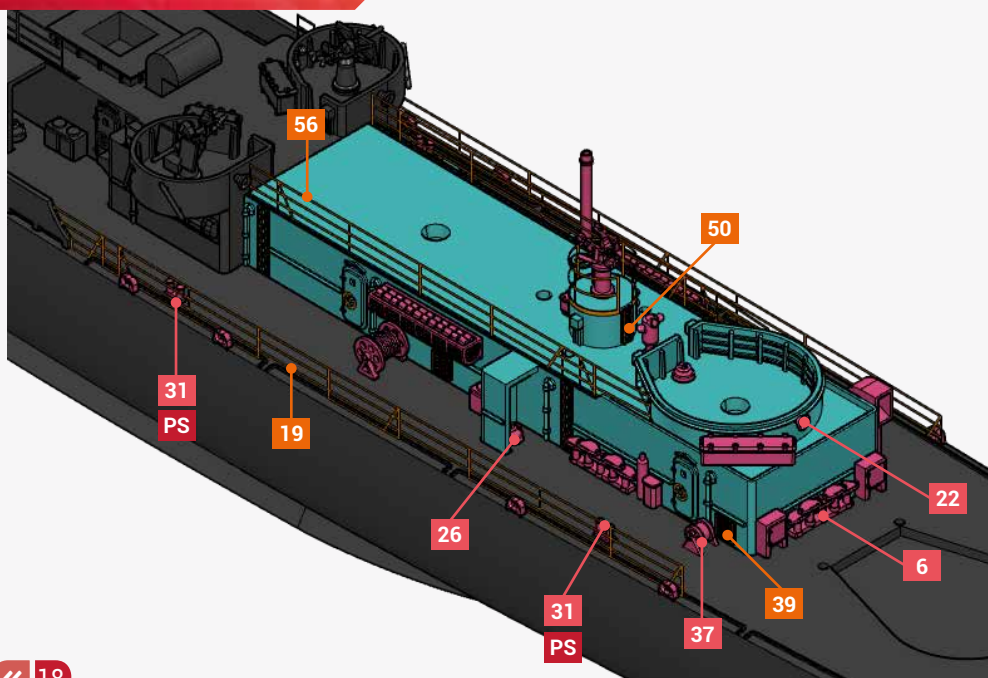
-4 LASTLY BUILD ALL THE ACCESSORIES FOUND ON THE MAST TOP, PLATFORMS, RADAR ANTENNA, ETC... AND YOU'RE DONE !

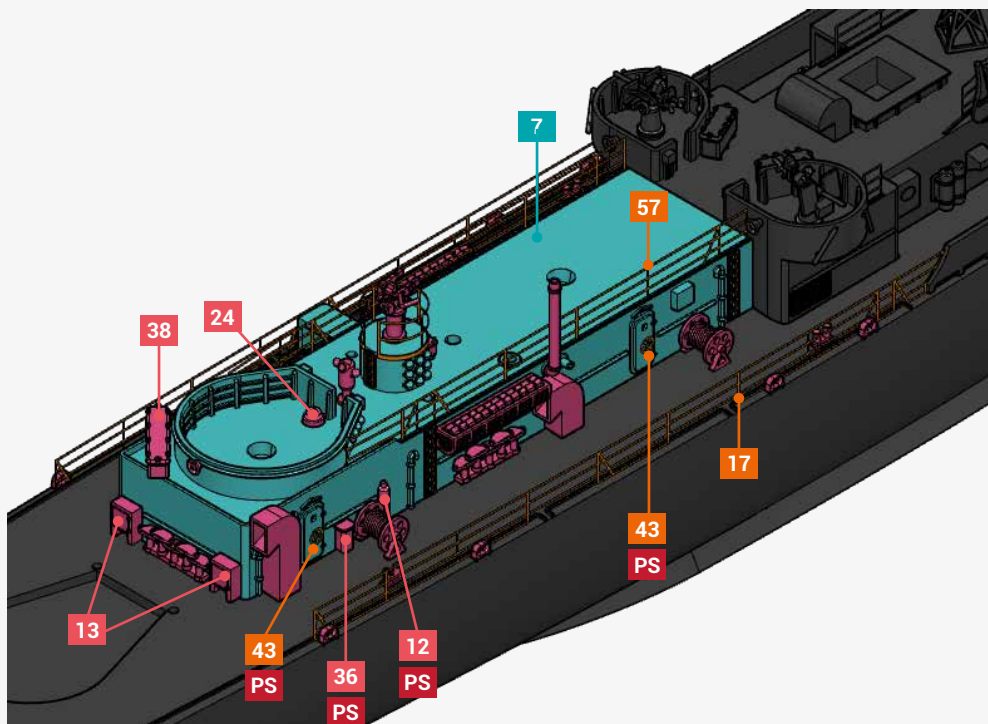


STEP 9

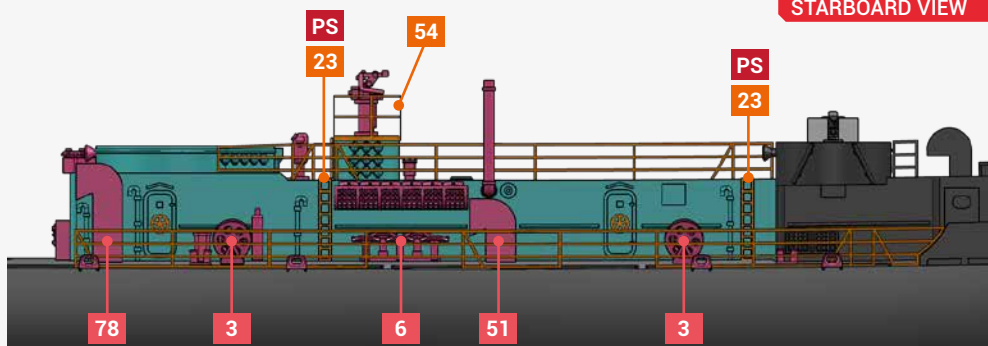


STEP 10

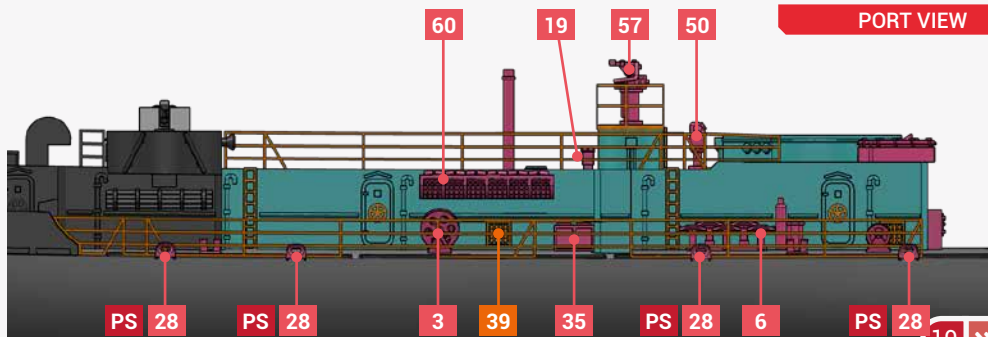




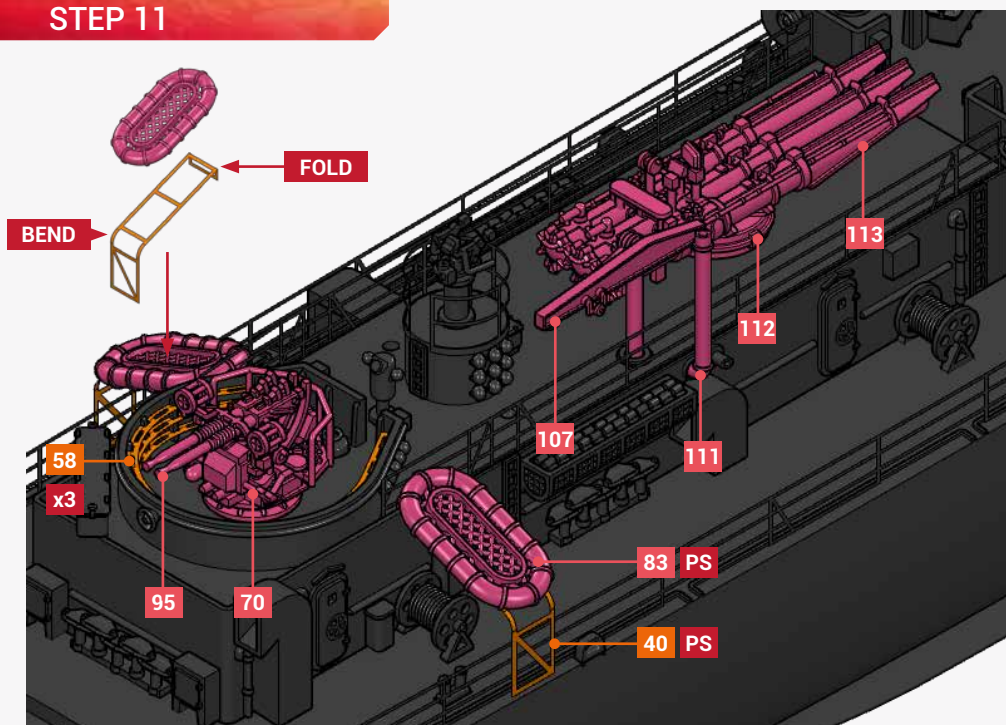
STARBOARD VIEW



PORT VIEW



STEP 11

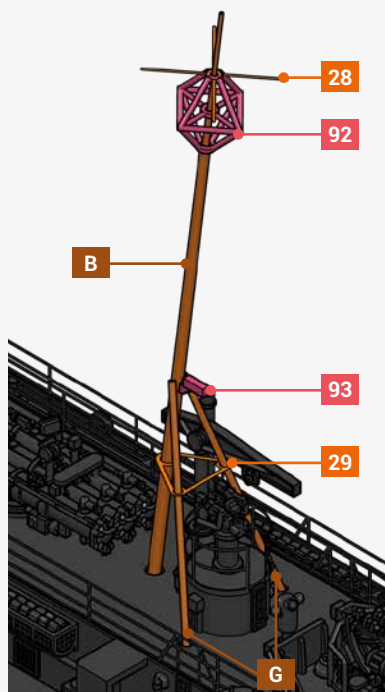
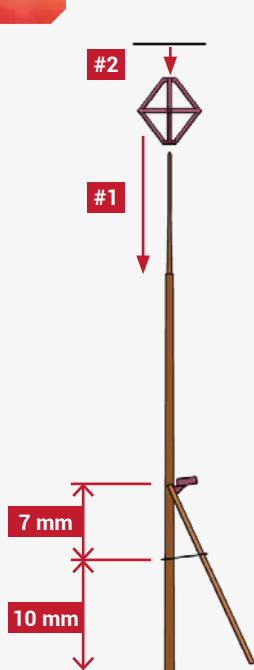


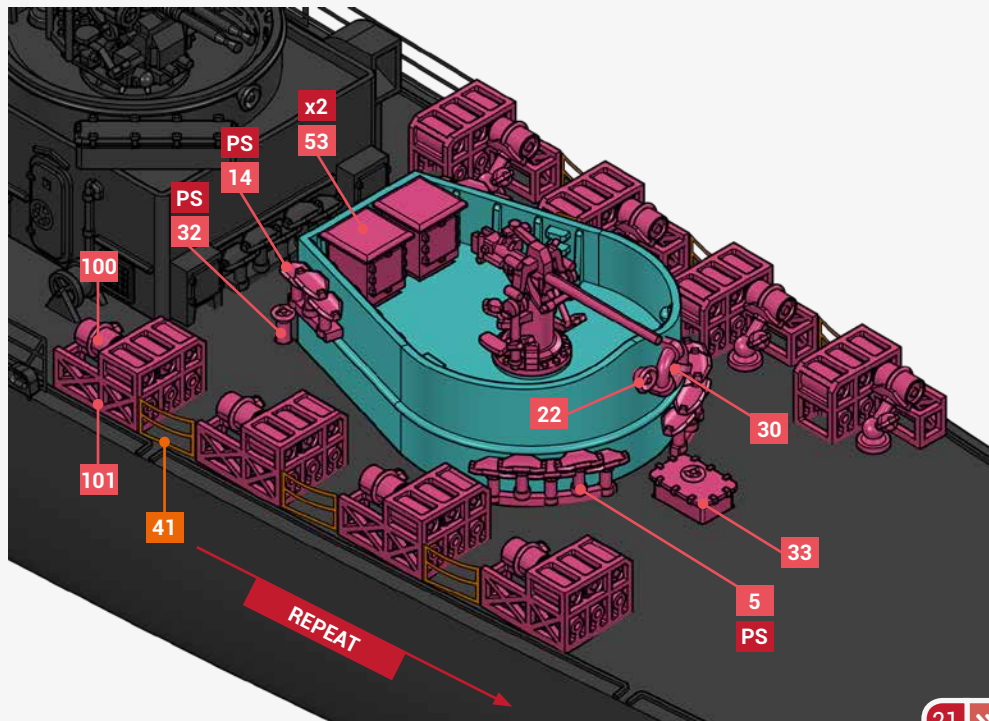
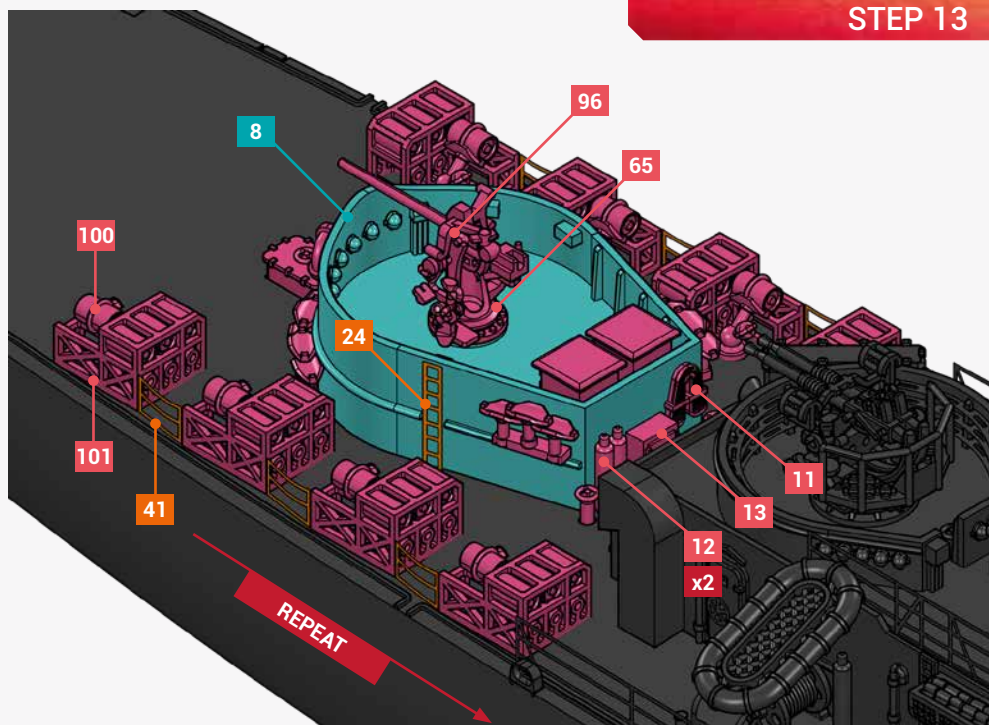
STEP 12

ASSEMBLY OF THE MAIN MAST WILL BE EASIER IF THE TORPEDO CRANE AND GALLEY FUNNEL ARE ADDED AFTER THE MAST IS BUILT.

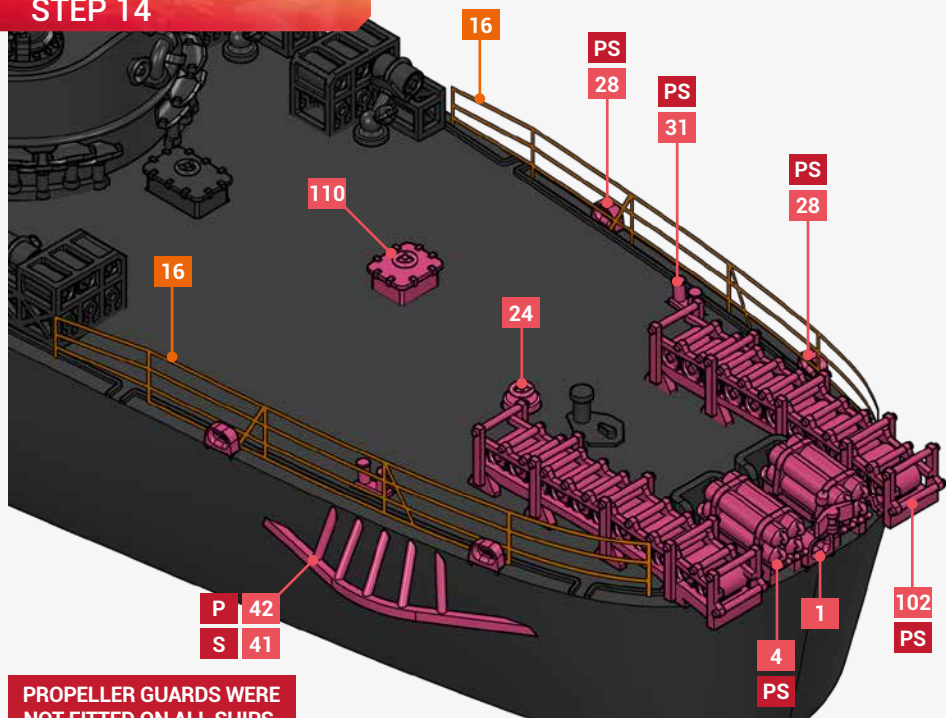
1- CUT A SMALL SECTION OF THE RINGS ON PE PART 29 AND INSERT THIS PART ON MAIN MAST B. PLACE AND CEMENT BRASS PARTS B AND G ON DECK, TOPS OF PARTS G GO ON EACH SIDE OF MAST B. THEN IT WILL BE POSSIBLE TO PUT PE PART 29 AT ITS CORRECT EMPLACEMENT ON THE MAST.

2- FINISH ASSEMBLY BY ADDING RESIN PARTS 92 AND 93, PE PART 28 GOES AT THE TOP OF HF/GF ANTENNA.



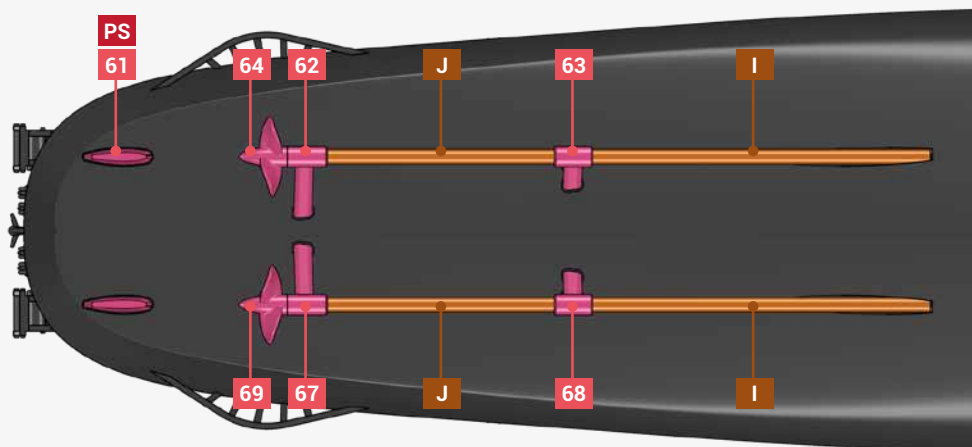


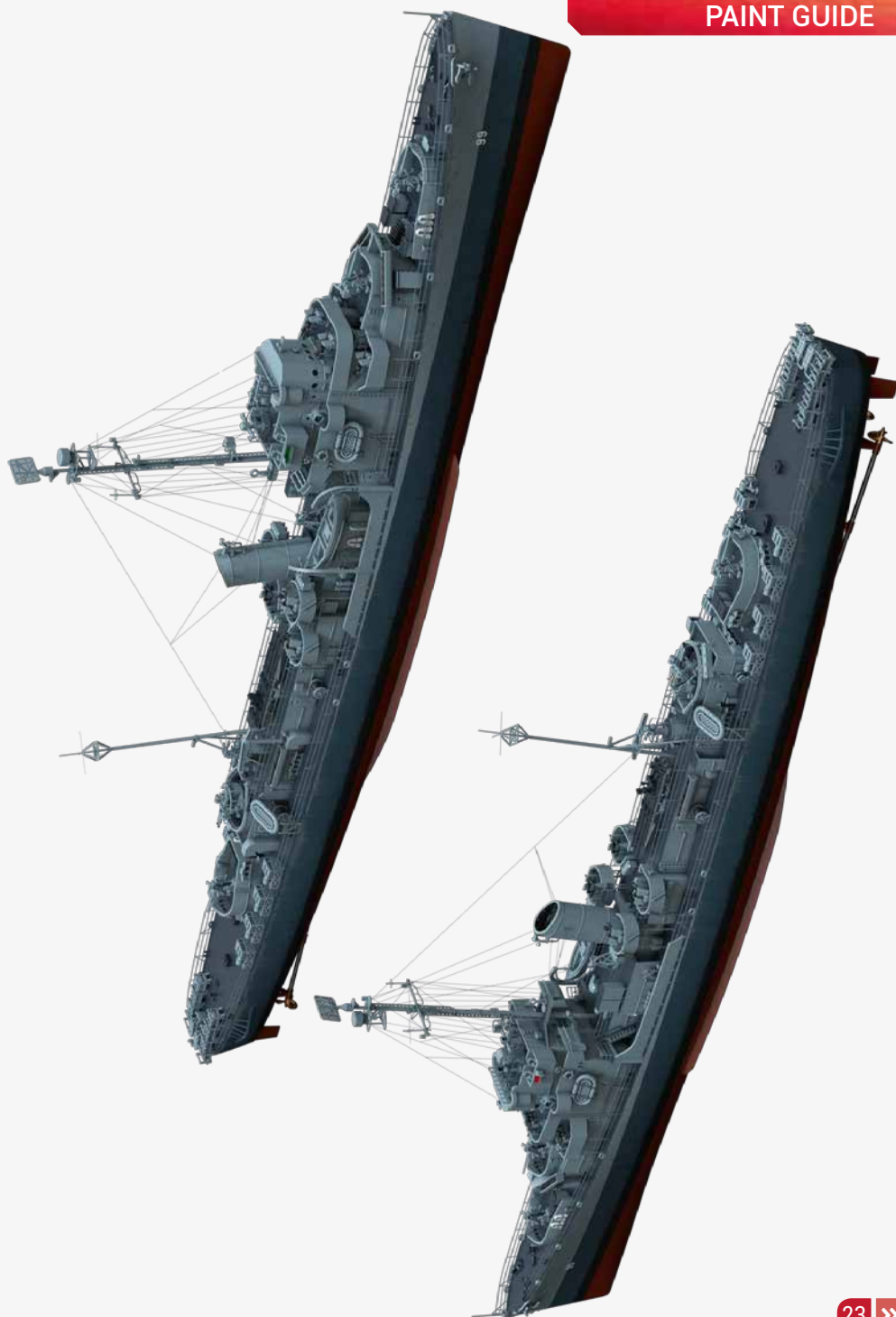
STEP 14



PROPELLER GUARDS WERE
NOT FITTED ON ALL SHIPS.
REFER TO NAVSOURCE.

STEP 15





MEASURE 22 WAS USED HERE, BUT THERE ARE MANY VARIATIONS ON THE CLASS CANNON.
FOR MORE INFORMATION PLEASE VISIT :
[HTTPS://WWW.SHIPCAMOUFLAGE.COM/CANNON_CLASS.HTM](https://www.shipcamouflage.com/cannon_class.htm)

