



EDSALL CLASS DESTROYER ESCORT

About the Edsall class Destroyer Escort :

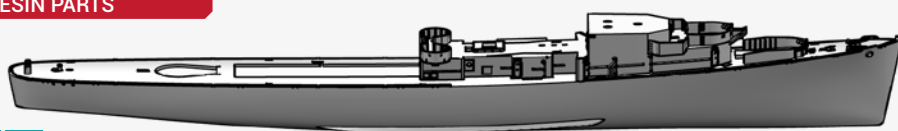
Protection of convoys crossing both the Atlantic or Pacific Oceans needed the design of a class of warship specialized in the submarine hunt. The USA developed the Destroyer Escorts, a smaller, less armed and slower unit than the fleet destroyers of the Fletcher class. Of the 507 DEs built, 85 were Edsalls. They differed mainly from the preceding Cannon by their powerplant, FMR engines (for Fairbanks Morse reduction geared) atype in service with the submarines at the moment. Anti aircraft armament was also improved, of the six 40mm Bofors (one twin and four singles found on the later Cannons), Edsalls were equipped with a quad and two twins 40mm Bofors, making a total of eight barrels.

À propos du Destroyer Escort classe Edsall :

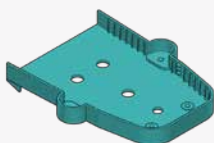
La protection des convois en Atlantique ou Pacifique nécessitait la création d'une classe de bâtiments spécialisés dans la chasse aux sous-marins. Les États-Unis développèrent les Destroyer Escorts, navires plus petits, moins rapides et plus légèrement armés que les grands destroyers de la classe Fletcher. Parmi les 507 Destroyer Escorts construits, 85 sont de la classe Edsall. Ils diffèrent des Cannon les précédant par la motorisation de type FMR (Fairbanks Morse reduction-geared) utilisée aussi pour les sous-marins. Par rapport aux Cannon, l'armement anti-aérien est renforcé, de six tubes de 40mm Bofors (quatre simples et un double), les Edsall sont équipés d'un ensemble quadruple et deux doubles, portant ainsi le total à huit tubes.

PARTS

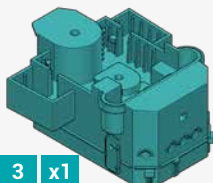
RESIN PARTS



1 x1



2 x1



3 x1



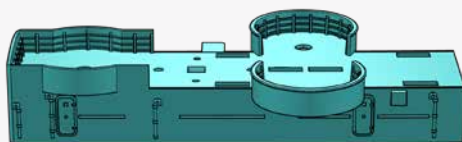
4 x1



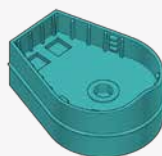
5 x1



6 x1



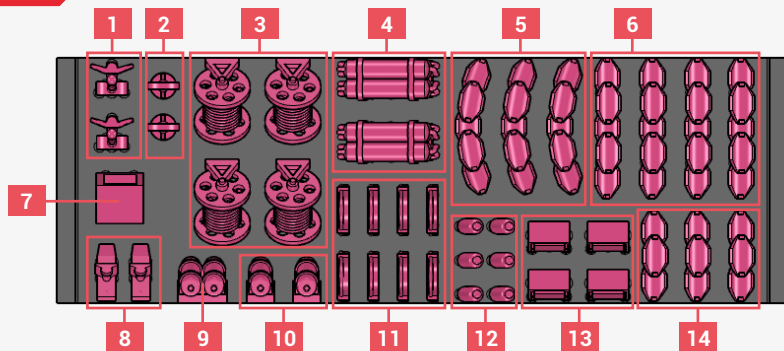
7 x1



8 x1

3D PRINTED PARTS

BAR A



1 x1



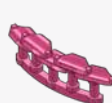
2 x1



3 x3



4 x2



5 x2



6 x3



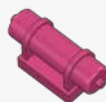
7 x1



8 x1



9 x1



10 x2



11 x7



12 x4

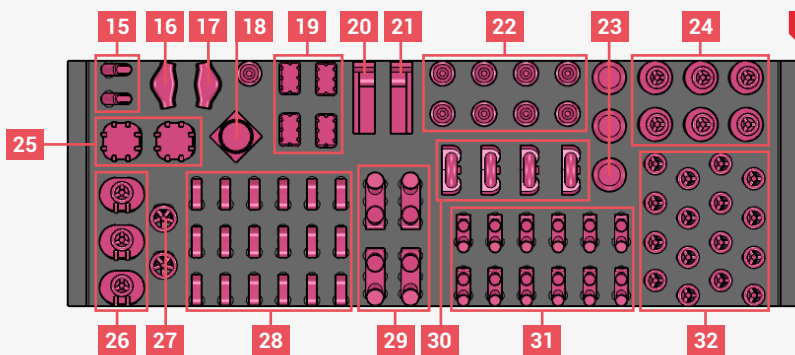


13 x3

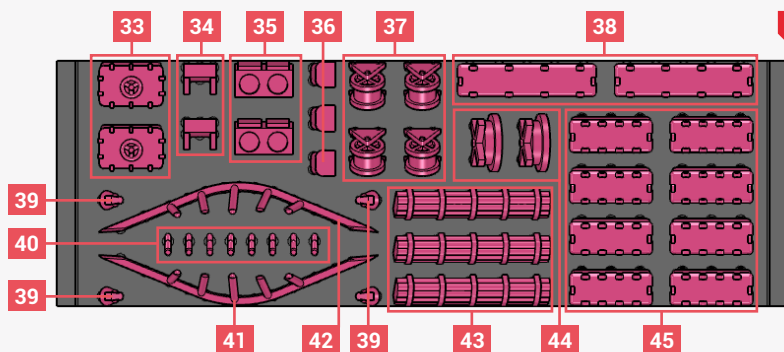


14 x2

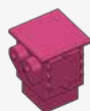
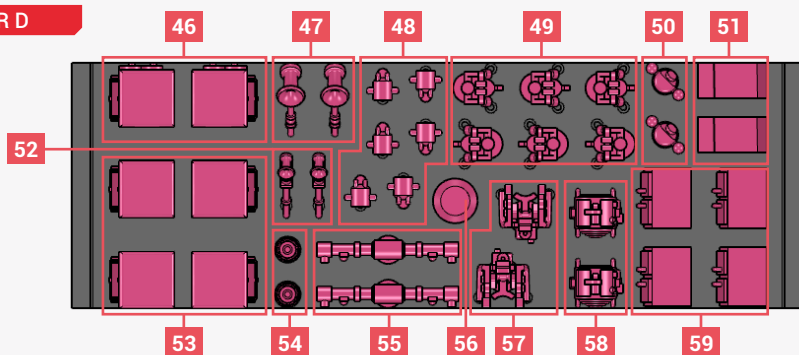
BAR B



BAR C



BAR D



46 x2



47 x1



48 x2



49 x4



50 x1



51 x1



52 x1



53 x4



54 x1



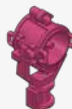
55 x1



56 x1



57 x3

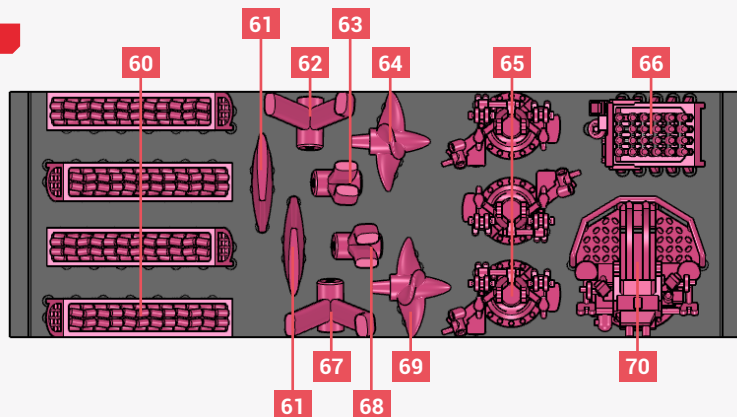


58 x2



59 x2

BAR E



60 x5



61 x2



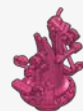
62 x1



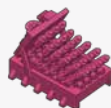
63 x1



64 x1



65 x3



66 x1



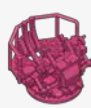
67 x1



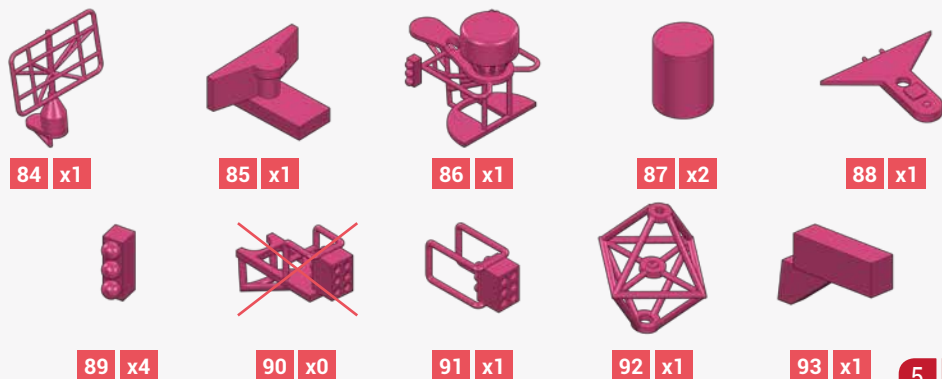
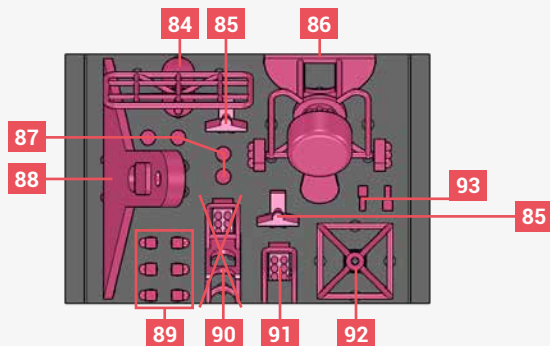
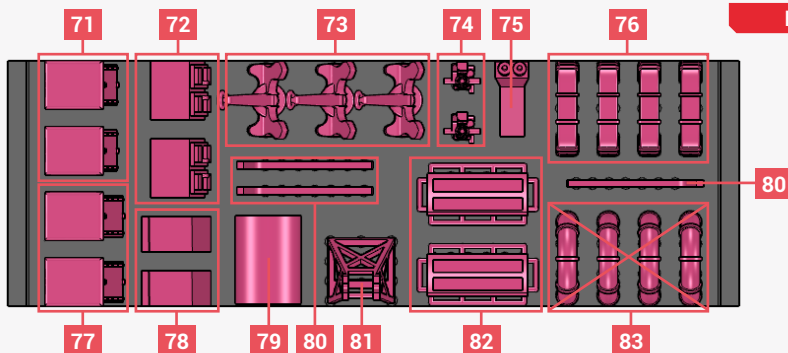
68 x1



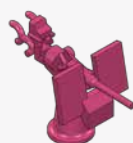
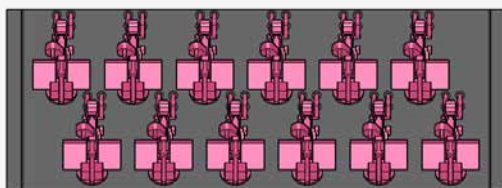
69 x1



70 x2

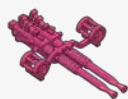
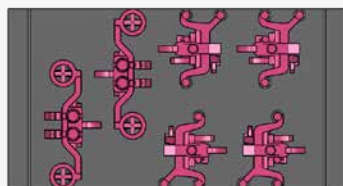


BAR H



94 x10

BAR I

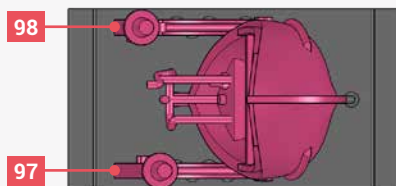


95 x2



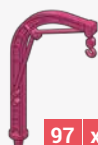
96 x3

BAR J



98

97



97 x1



98 x1

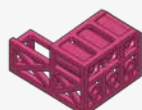


99 x1

BAR K

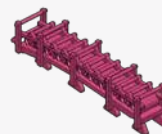
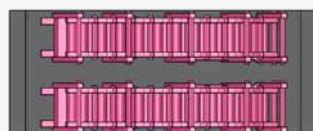


100 x8



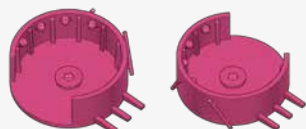
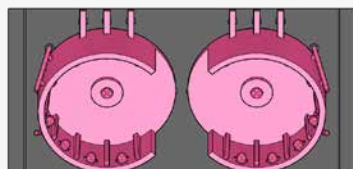
101 x8

BAR L



102 x2

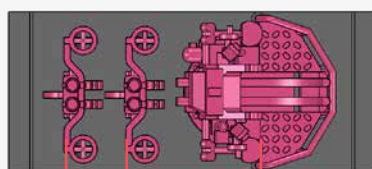
BAR M



103 x1

104 x1

BAR N

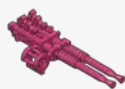
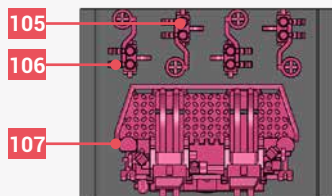


95

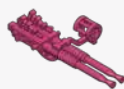
95

70

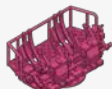
BAR H



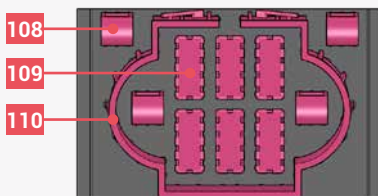
105 x1



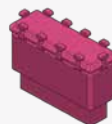
106 x1



107 x1



108 x2

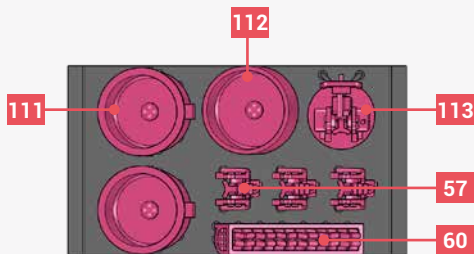


109 x6



110 x1

BAR P



111 x2



112 x1



113 x1

BRASS PARTS

A x1



B x1



D	x1	Ø=0.3mm L=8mm
E	x2	Ø=0.4mm L=14mm
F	x1	Ø=0.4mm L=16.5mm
G	x2	Ø=0.4mm L=18mm
H	x1	Ø=0.6mm L=13mm
I	x2	Ø=1mm L=15.5mm
J	x2	Ø=1mm L=24mm

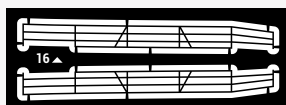
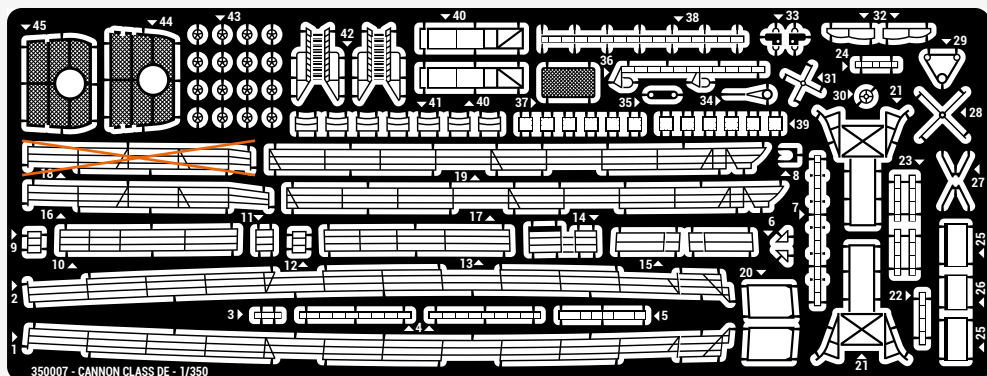
C x2



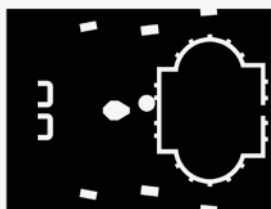
DECALS

0 0 0 0 0 0 0
1 1 1 1 1 1 1
2 2 2 2 2 2 2
3 3 3 3 3 3 3
4 4 4 4 4 4 4
5 5 5 5 5 5 5
6 6 6 6 6 6 6
7 7 7 7 7 7 7
8 8 8 8 8 8 8
9 9 9 9 9 9 9

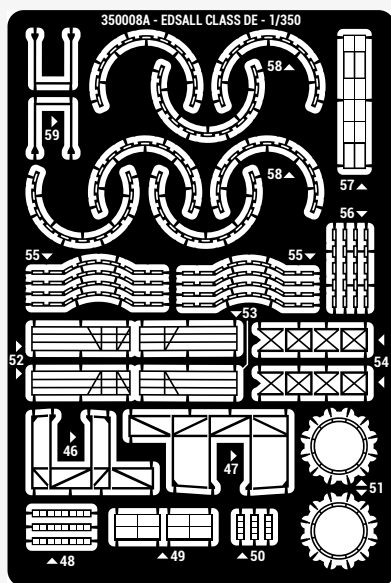
BRASS PARTS



PART 16 EXTRA FRET



20MM GUN AFT BATHTUB TOOL



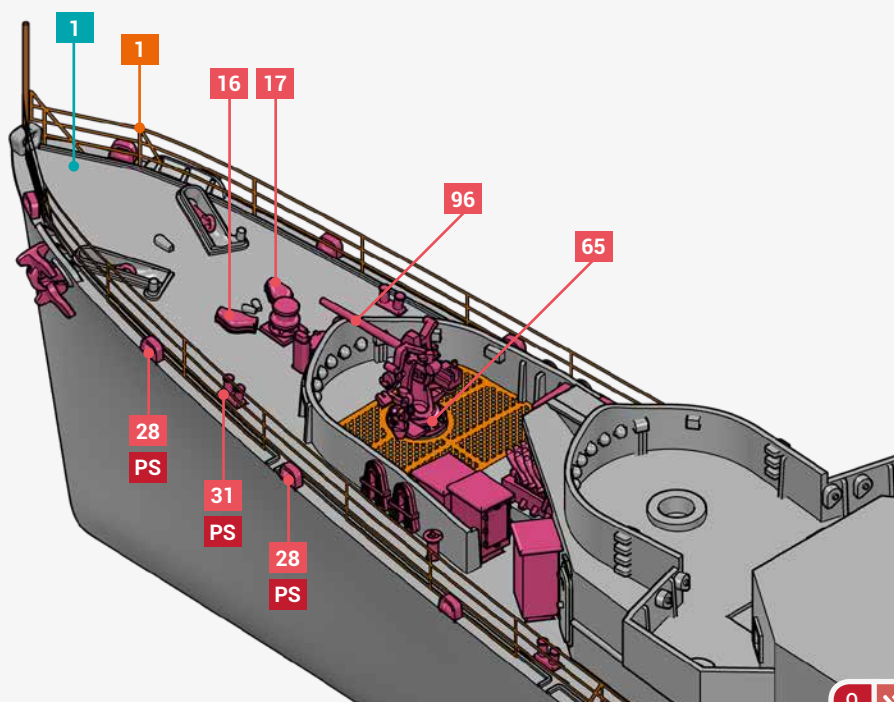
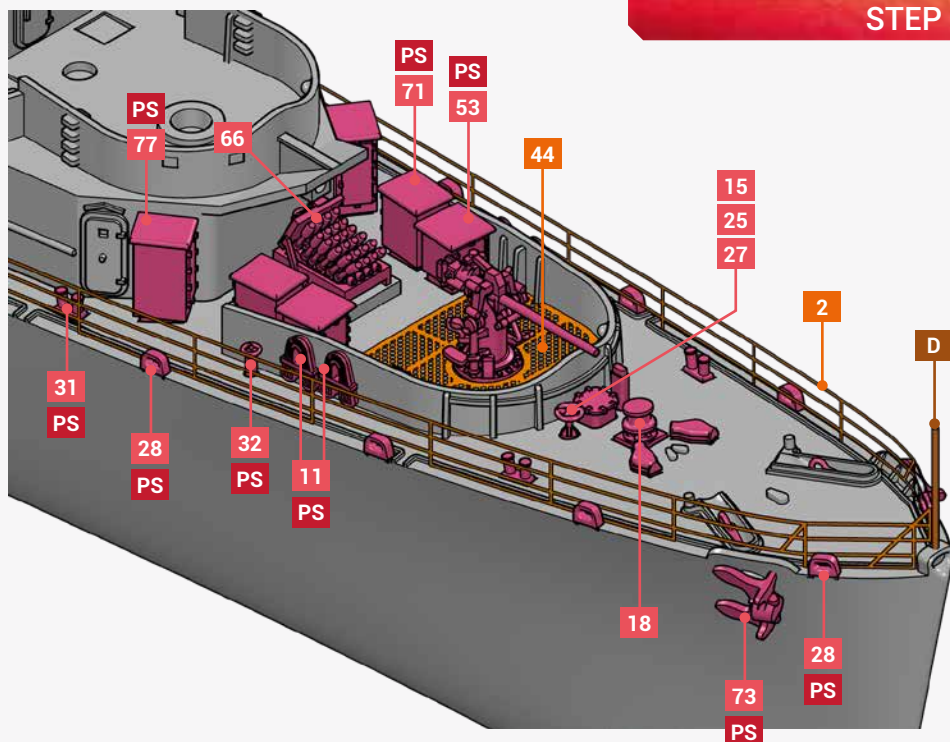
ASSEMBLY NOTES

XX	RESIN PARTS
XX	3D PARTS
XX	PHOTOETCH PARTS
XX	BRASS PARTS
XX	DECALS PARTS

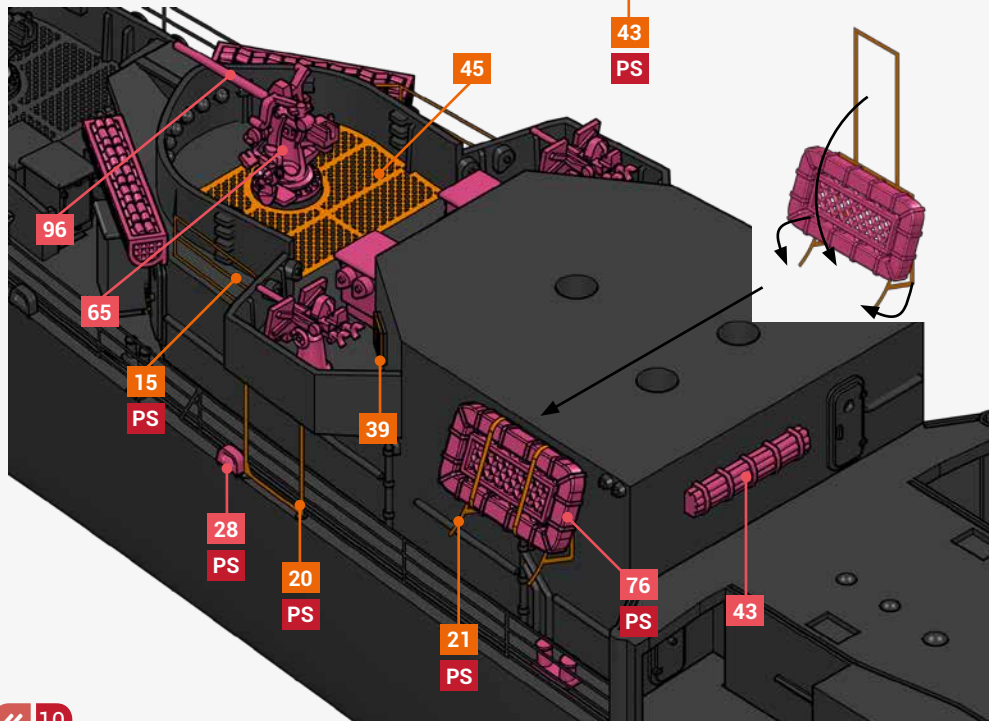
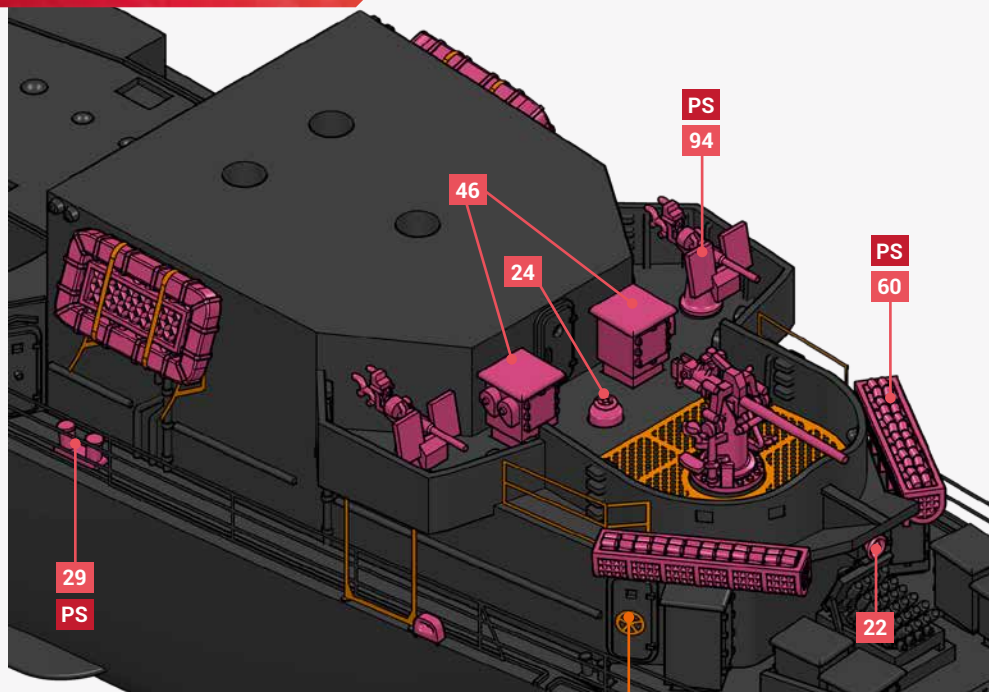
!	ASSEMBLY WARNING
PS	PORT & STARBOARD
P	PORT SIDE
S	STARBOARD SIDE
X	INFORMATIONS

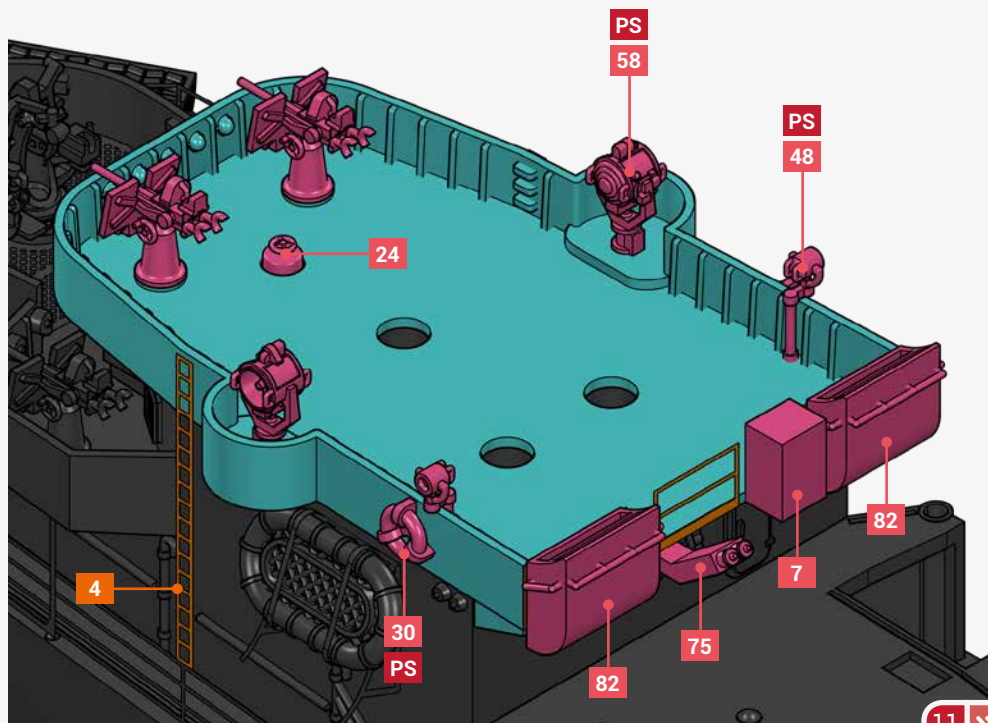
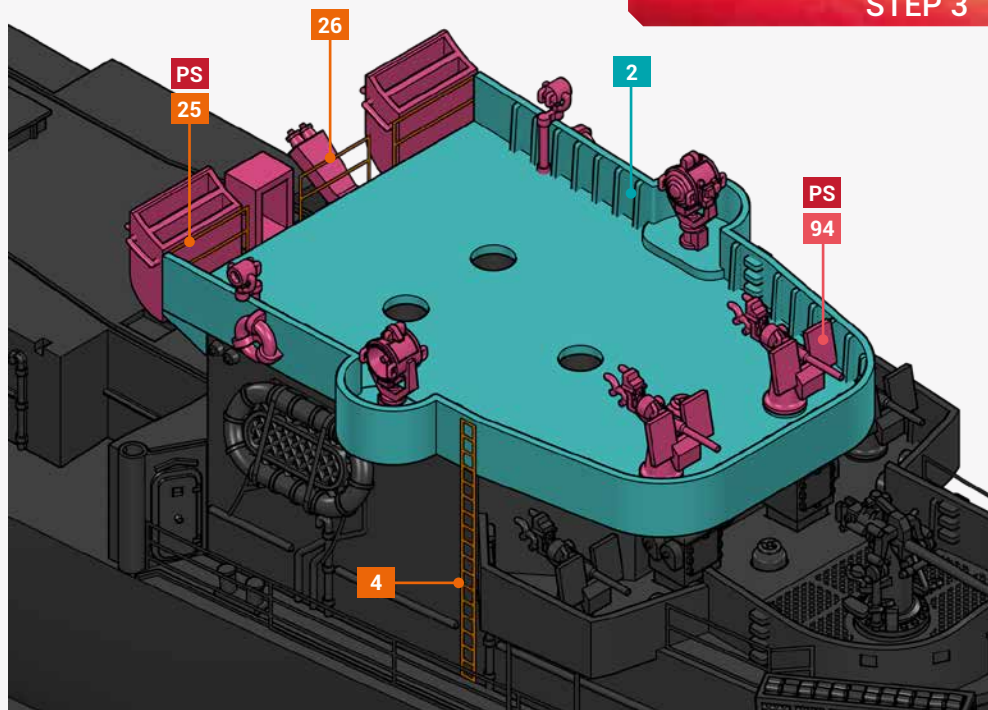
SOME PHOTOETCH AND 3D PARTS ARE PROVIDED IN EXTRA NUMBERS.

IMPORTANT ! PLEASE FULLY READ THE INSTRUCTIONS BEFORE STARTING THE BUILD !

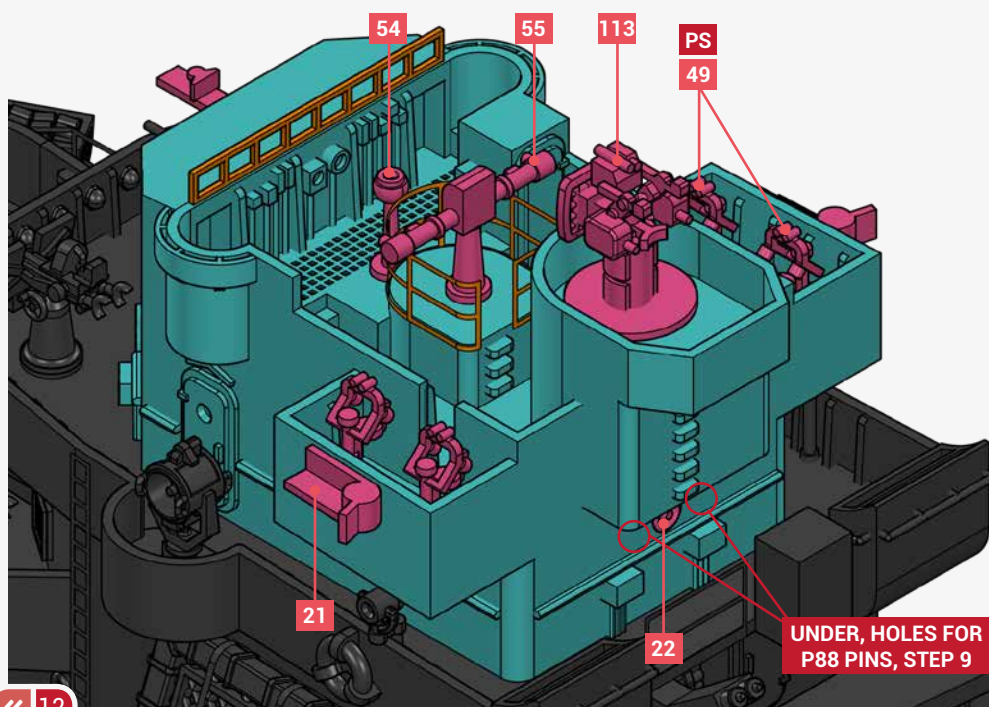
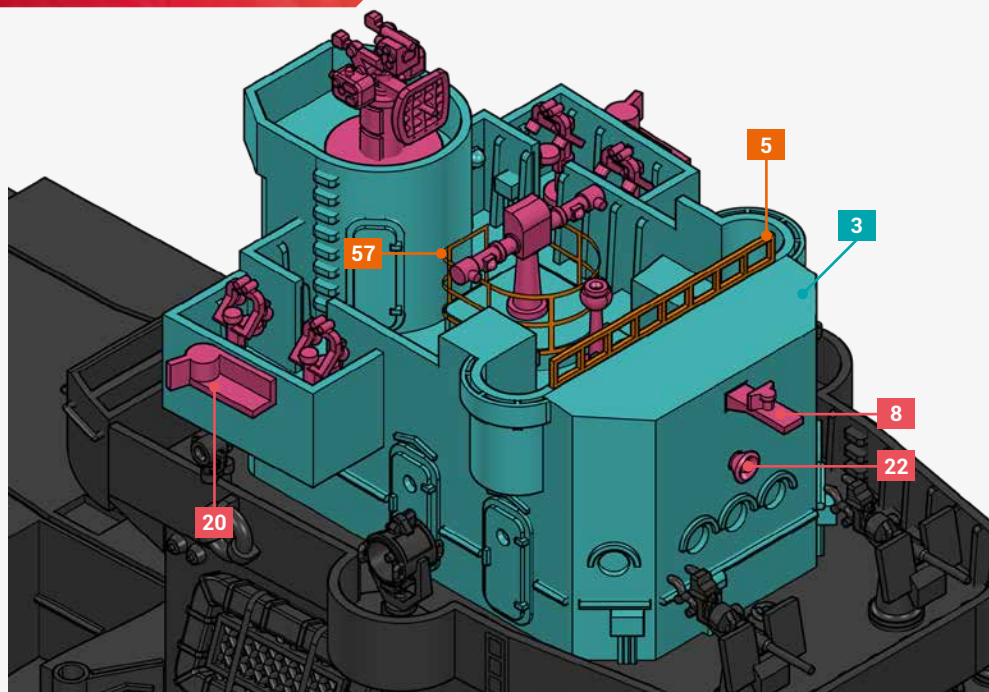


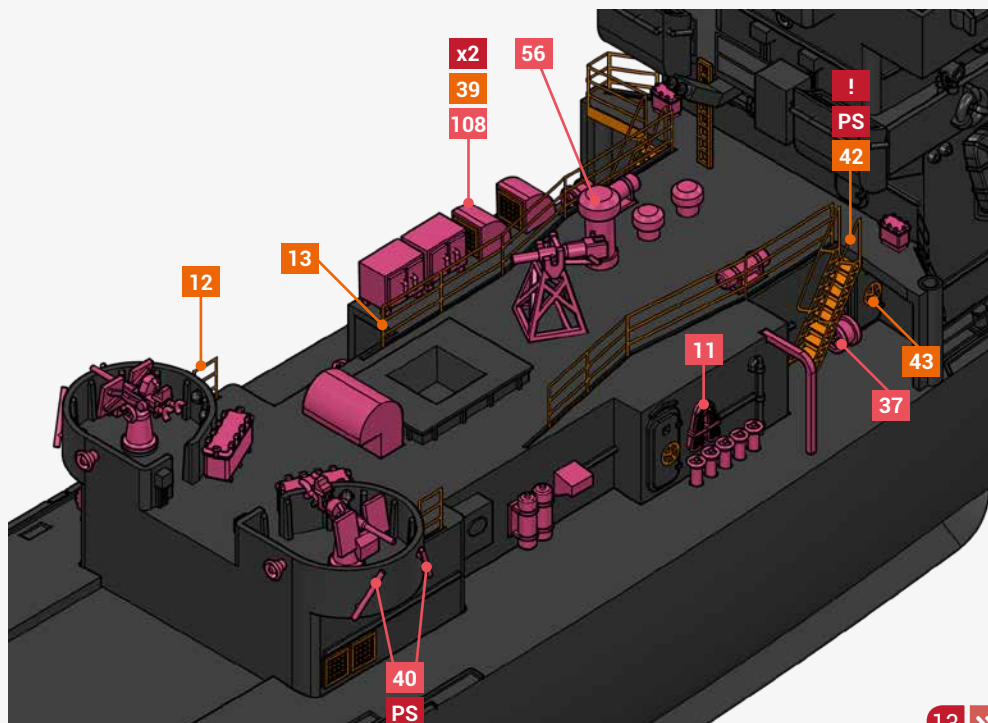
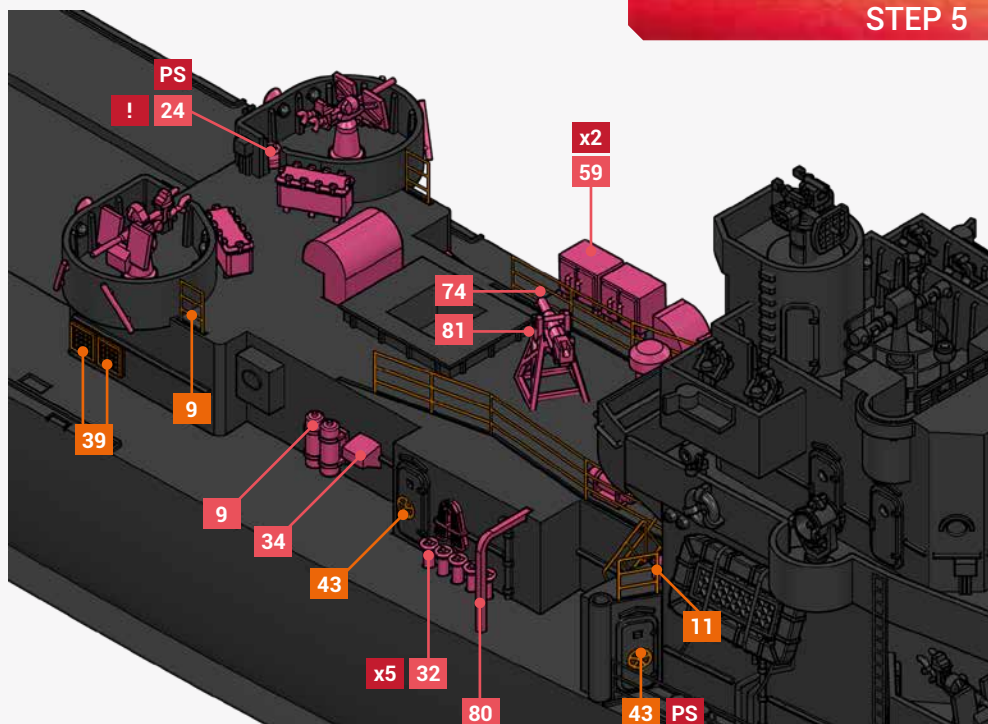
STEP 2



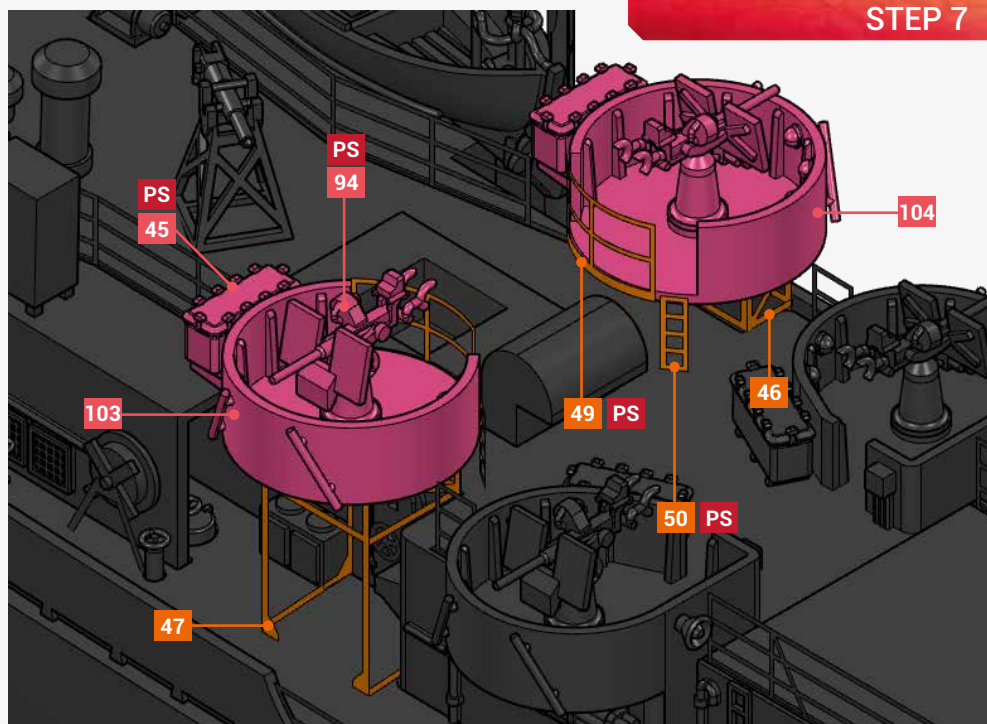


STEP 4

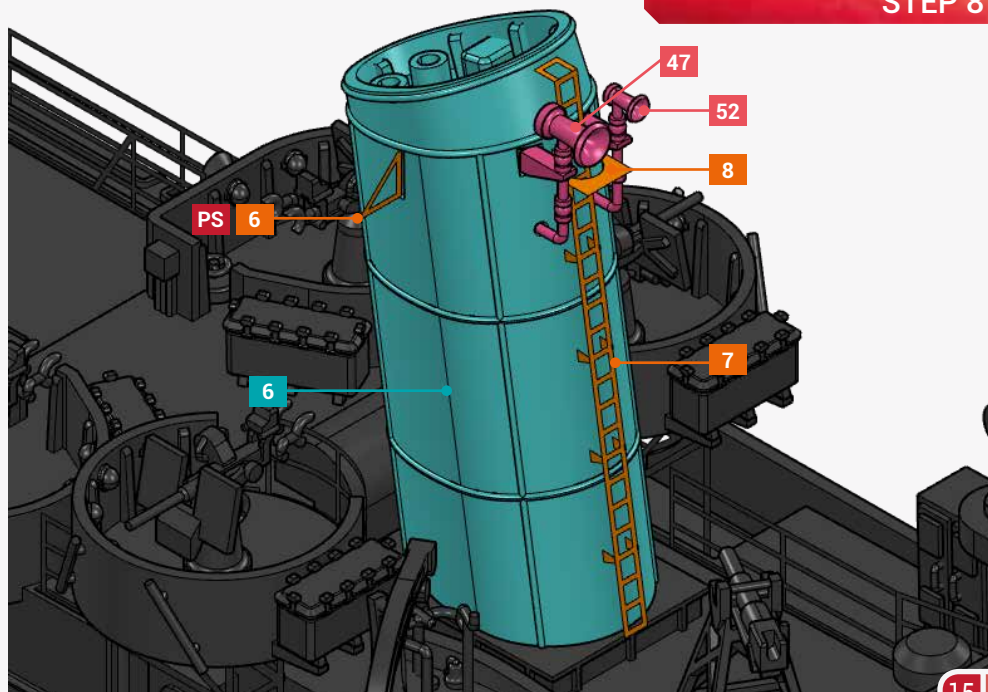




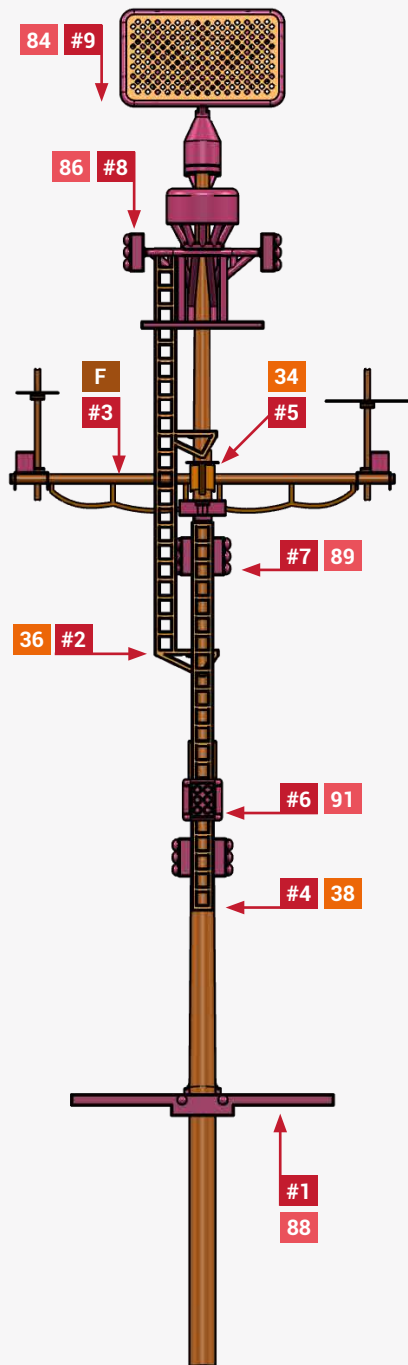
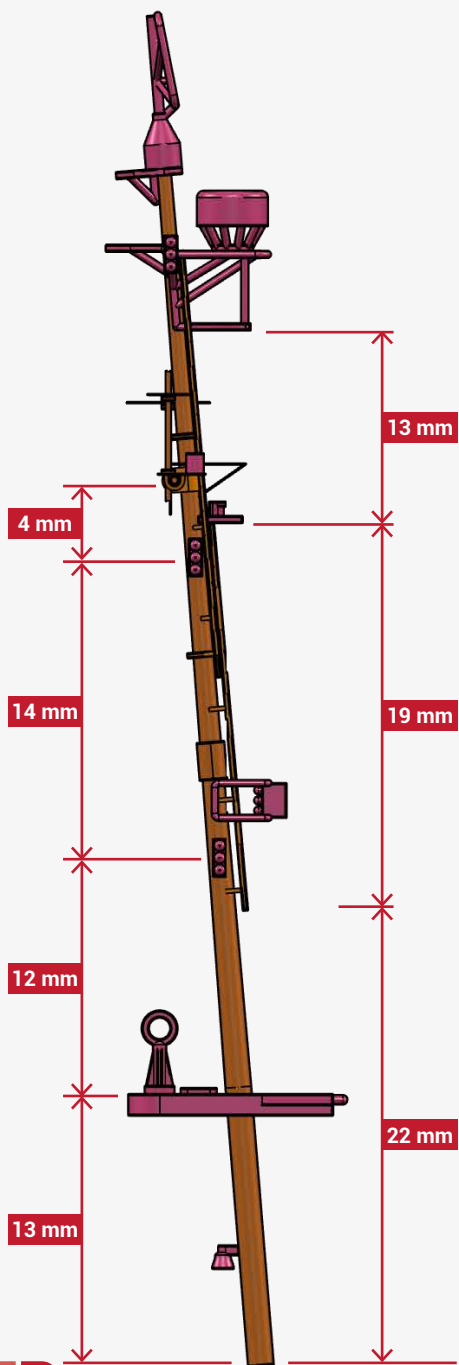
STEP 7

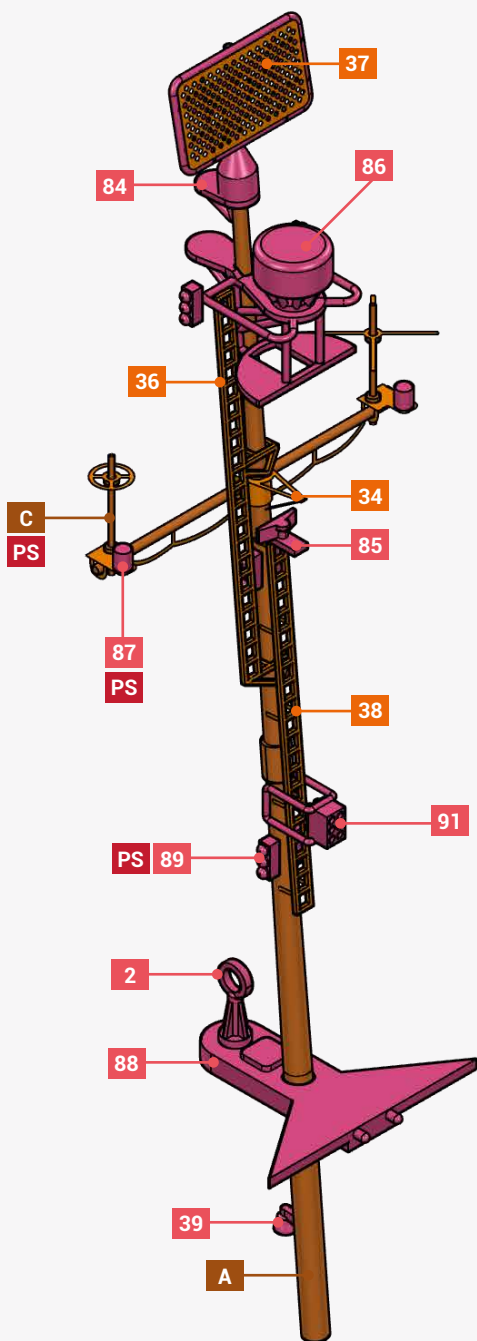


STEP 8



STEP 9



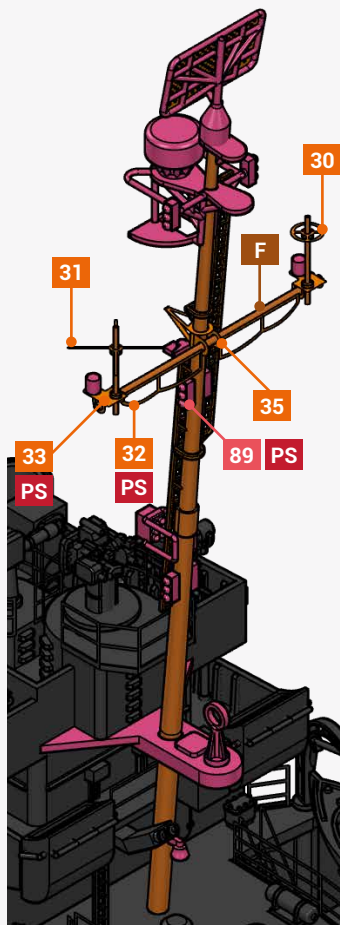


-1 IT IS VERY IMPORTANT TO RESPECT THE MEASURES GIVEN IN THE NOTICE, IF NOT MAST COULD NOT PROPERLY SIT ON THE DECK.

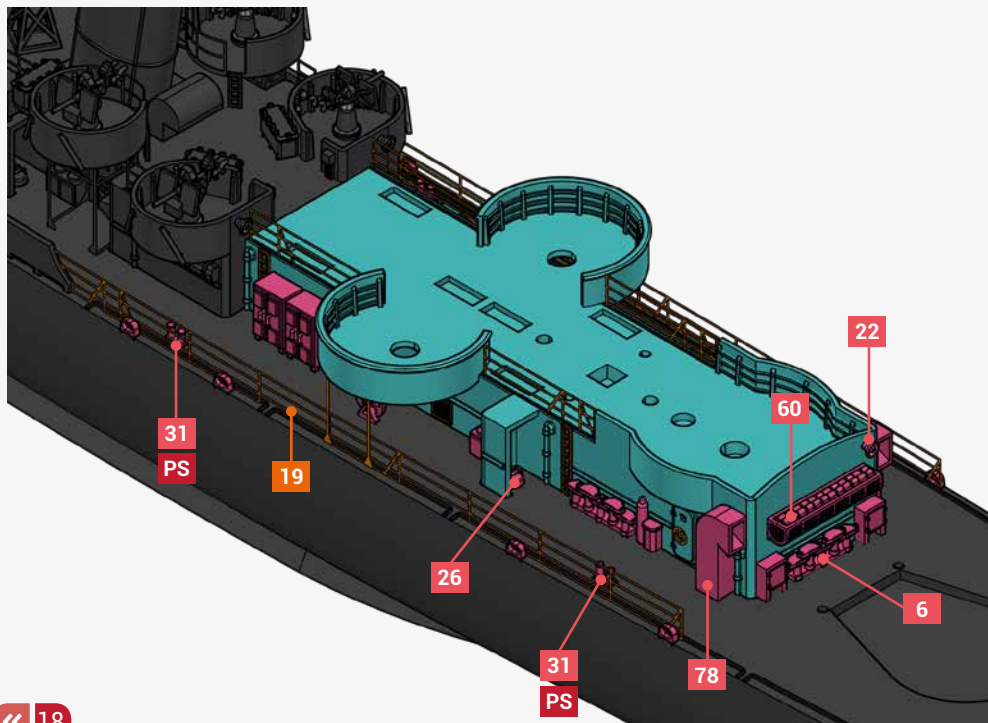
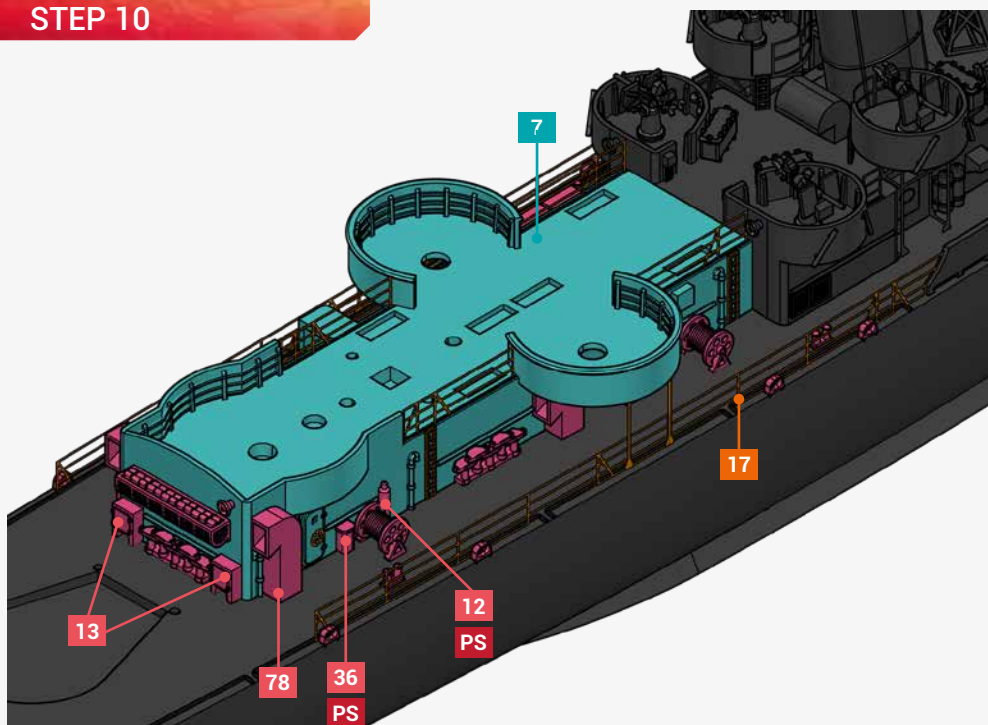
-2 FIRST, CEMENT RESIN PART 88 ON THE BRIDGE AND LET IT DRY FOR AT LEAST 24 HOURS. PART IS PARALLEL TO THE DECK.

-3 INSERT LADDER PE36 BY THE TOP, FOLD PE PART 35 IN U (SAME DIAMETER AS THE MAST) AND CEMENT IN PLACE. THEN ASSEMBLE ALL YARDARM PARTS, AND CEMENT LADDER PE36 IN PLACE. CEMENT PE LADDER 38, AND ADD ALL THE RESIN PARTS TO THE MAST. AT THIS STAGE OFF THE ASSEMBLY MAST COULD BE PUT IN ITS DEFINITIVE PLACE ON THE HULL.

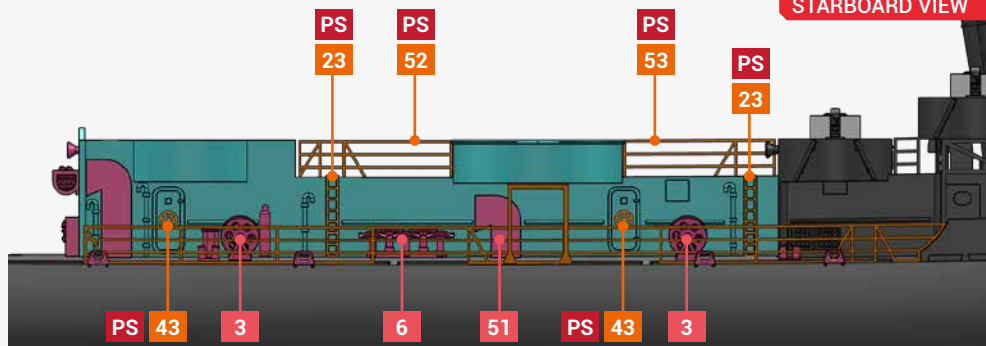
-4 LASTLY BUILD ALL THE ACCESSORIES FOUND ON THE MAST TOP, PLATFORMS, RADAR ANTENNA, ETC... AND YOU'RE DONE !



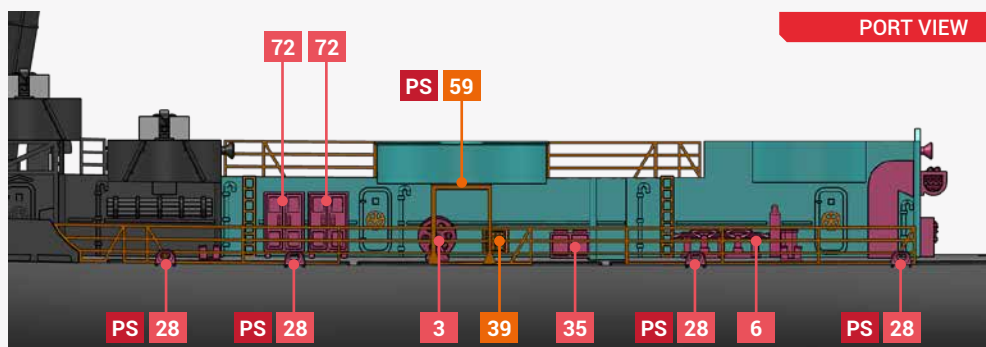
STEP 10



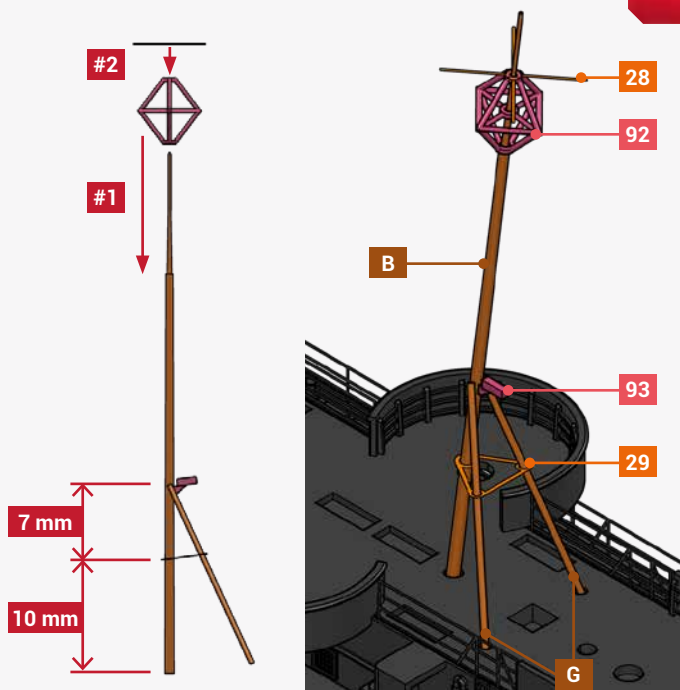
STARBOARD VIEW



PORT VIEW



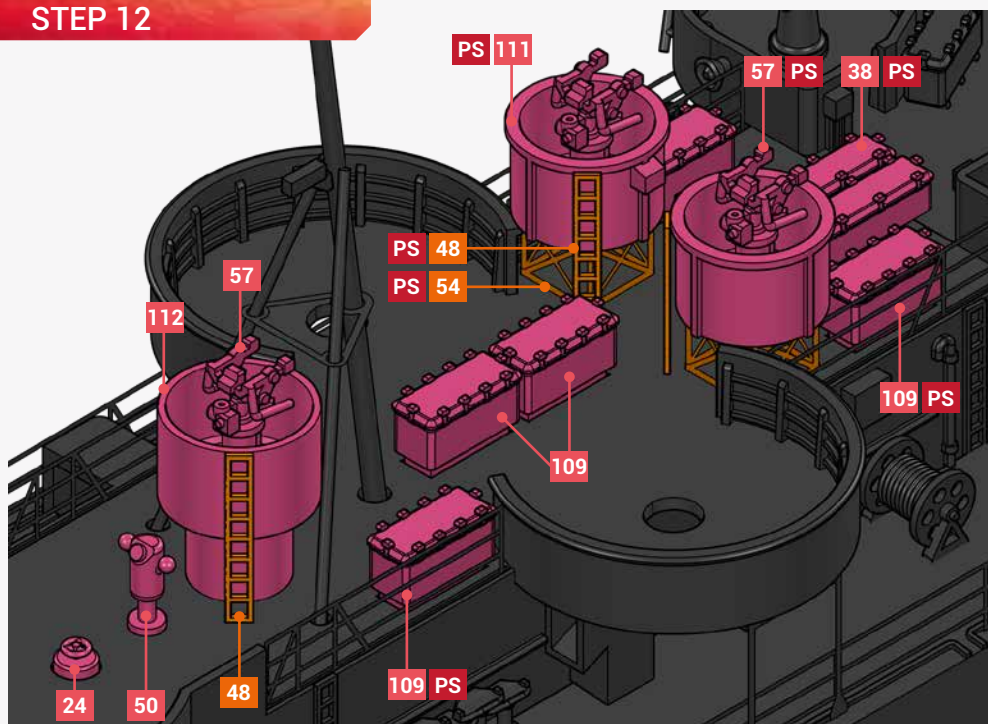
STEP 11



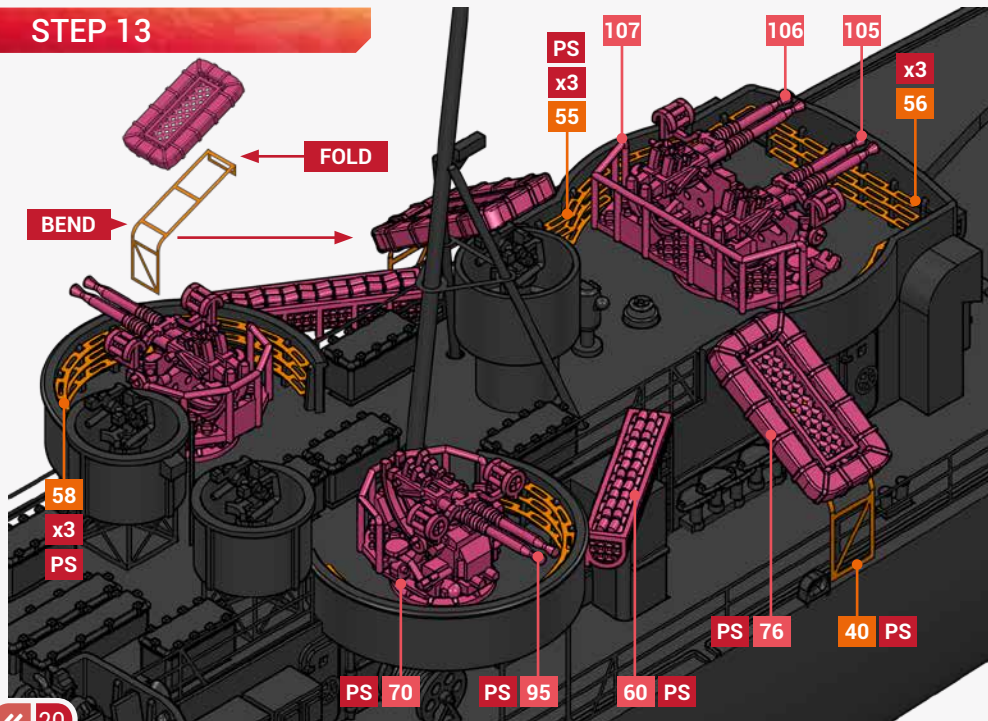
1- CUT A SMALL SECTION OF THE RINGS ON PE PART 29 AND INSERT THIS PART ON MAIN MAST B. PLACE AND CEMENT BRASS PARTS B AND G ON DECK, TOPS OF PARTS G GO ON EACH SIDE OF MAST B. THEN IT WILL BE POSSIBLE TO PUT PE PART 29 AT ITS CORRECT EMPLACEMENT ON THE MAST.

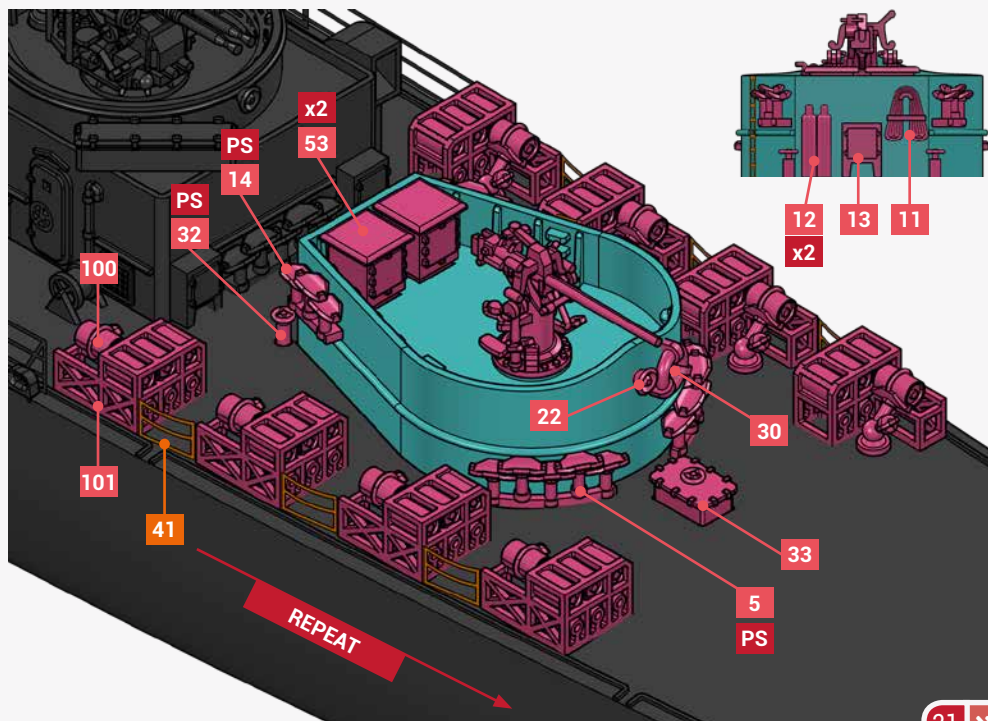
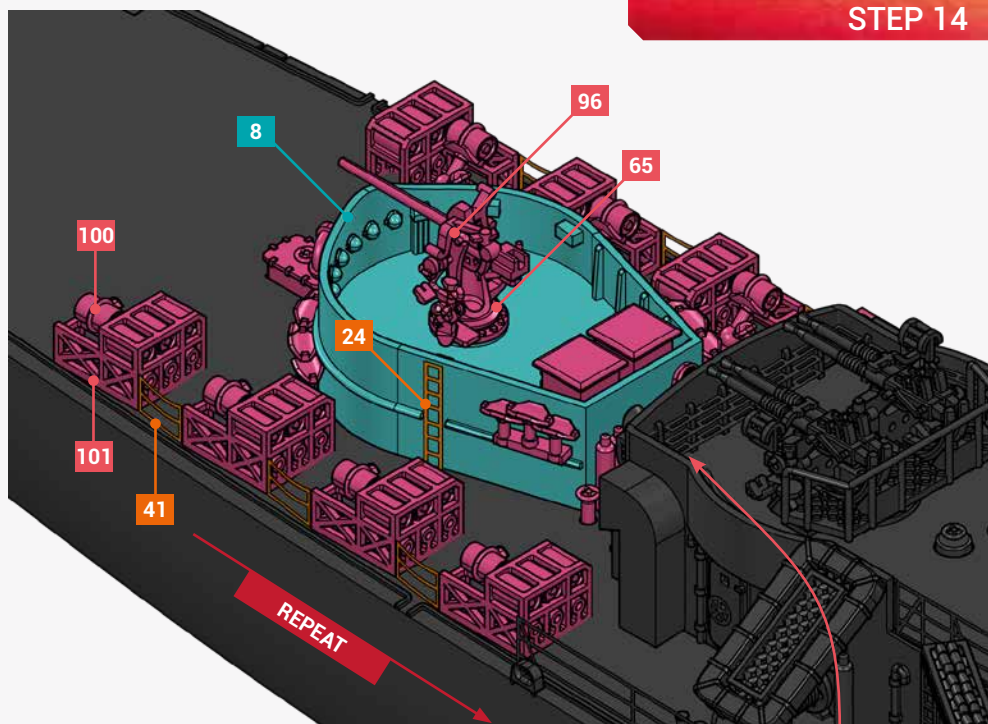
2- FINISH ASSEMBLY BY ADDING RESIN PARTS 92 AND 93, PE PART 28 GOES AT THE TOP OF HF/GF ANTENNA.

STEP 12



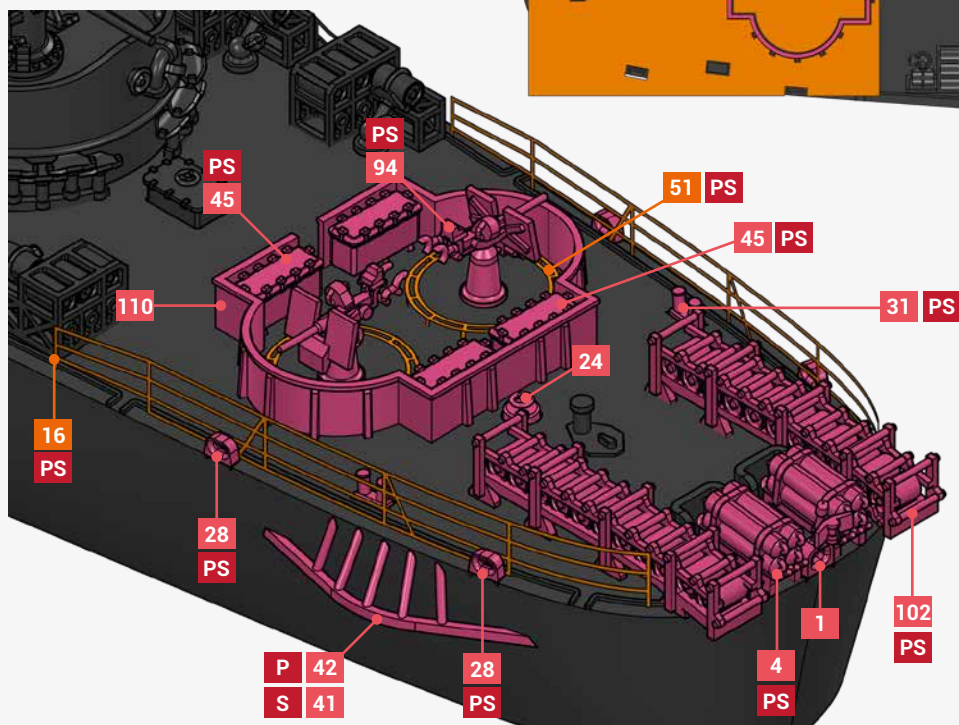
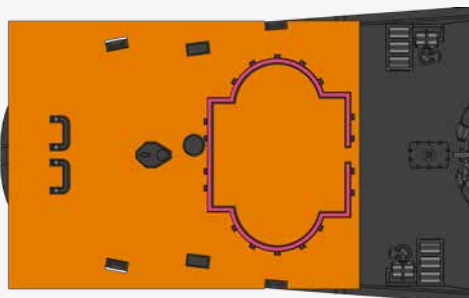
STEP 13



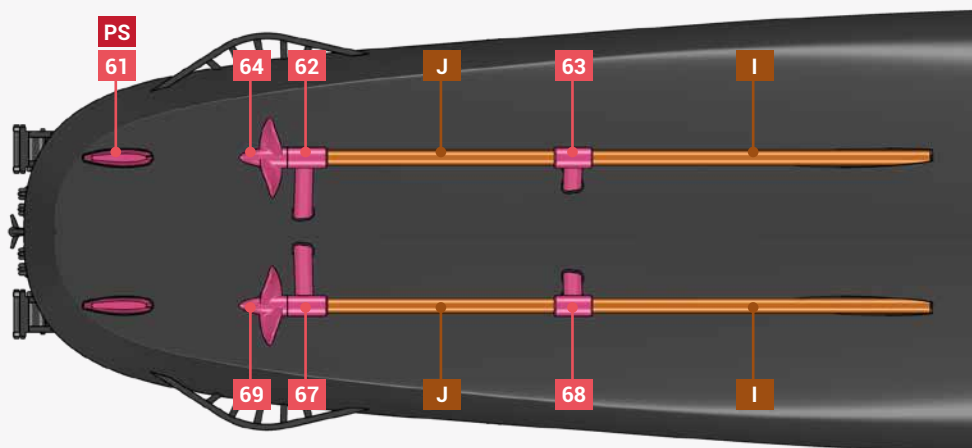


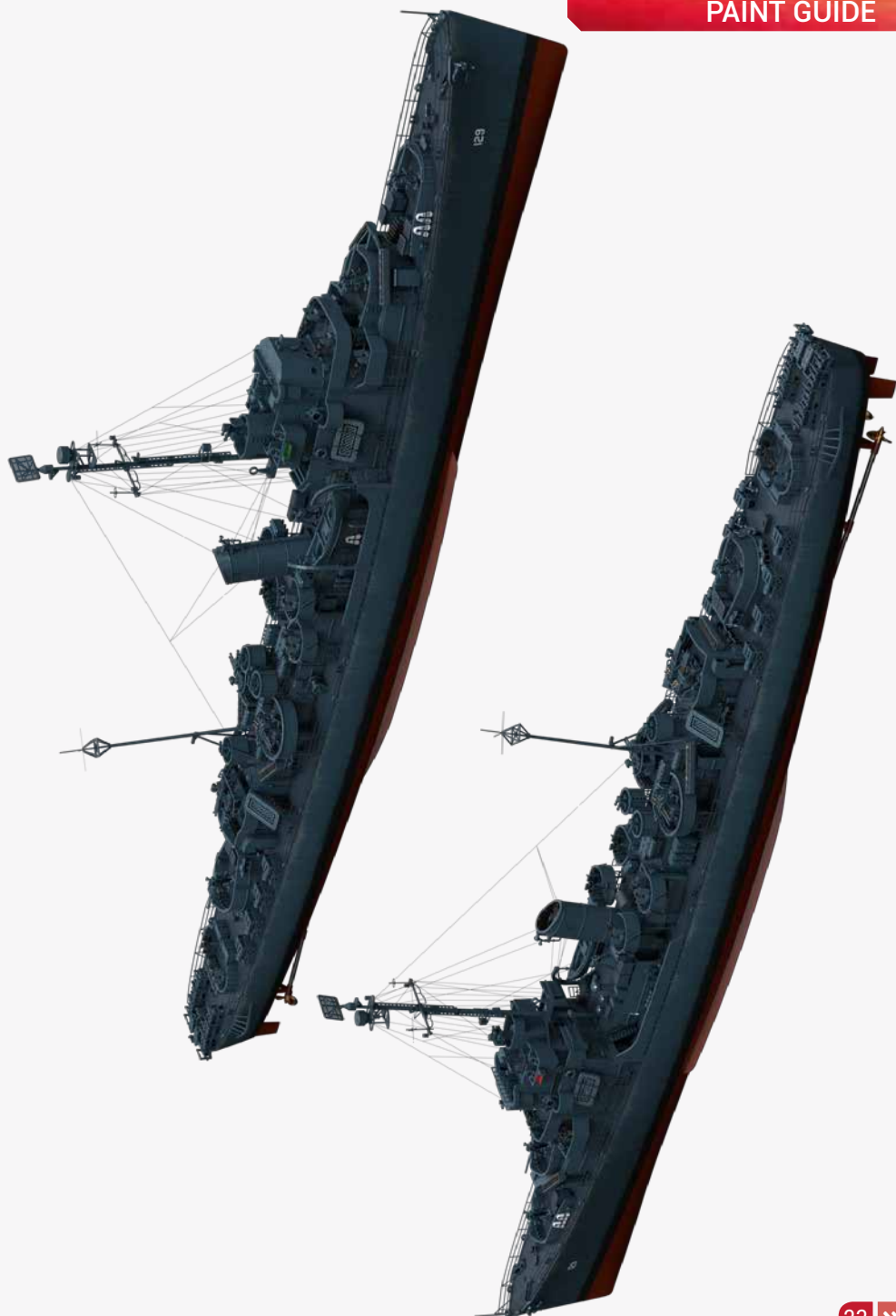
STEP 15

USE THE TOOL TO PLACE THE BATHTUB 3D PART. IT HAS TO BE DONE WITHOUT OTHER ELEMENT ON THE DECK.



STEP 16





MEASURE 21 WAS USED HERE, BUT THERE ARE MANY VARIATIONS ON THE CLASS CANNON.
FOR MORE INFORMATION PLEASE VISIT :
[HTTPS://WWW.SHIPCAMOUFLAGE.COM/CANNON_CLASS.HTM](https://www.shipcamouflage.com/cannon_class.htm)

