



USCGC BERTHOLF WMSL-750

About the USCGC Bertholf WMSL-750 :

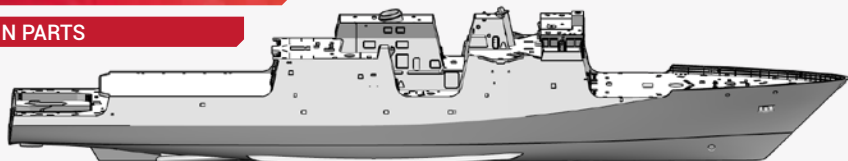
First unit of the Legend class built, USCGC Bertholf WMSL-750 was launched in September 2006 and commissioned in August 2008. She can be used for a variety of tasks: from environmental protection, search and rescue, fisheries protection, counter-terrorism activities to defense operations. In case of war, the eight cutters of the Legend class currently in service can be incorporated in the ranks of the US Navy. Armament consists of 1x Mk.112 57mm gun, 1 x 20mm Phalanx CIWS, 4 x .50 Browning M2 machine guns, and 2 x .303 M240B machine guns.

À propos de l'USCGC Bertholf WMSL-750 :

Première unité de la classe Legend construite, le USCGC Bertholf WMSL-750, a été lancé en 2006 pour une entrée en service en août 2008. Ses missions sont multiples, et consistent en protection des pêches, de l'environnement, des ports et des côtes, contre terrorisme, etc... En cas de conflit, il peut être intégré dans les rangs de l'US Navy et participer à des missions de guerre grâce à un armement important. (canon Mk.112 de 57mm, canon Phalanx de 20mm, 4 mitrailleuses Browning M2 de 12,7mm, 2 mitrailleuses de 7,62mm)

PARTS

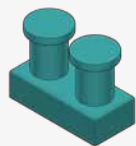
RESIN PARTS



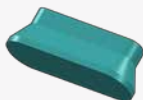
1 x1 FULL HULL VERSION



2 x1 WATERLINE HULL VERSION



3 x20



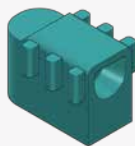
4 x2



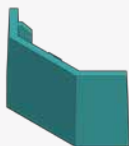
5 x1



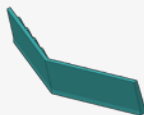
6 x1



7 x2



8 x2



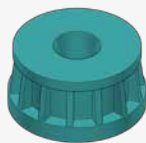
9 x1



10 x4



11 x2



12 x1



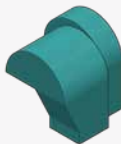
13 x6



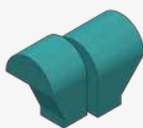
14 x4



15 x2



16 x1



17 x1



18 x1



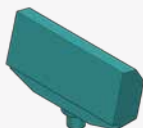
19 x1



20 x1



21 x1



22 x1



23 x1



24 x1



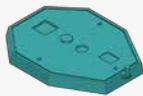
25 x1



26 x1



27 x1



28 x1



29 x1



30 x1



31 x2



32 x2



33 x1



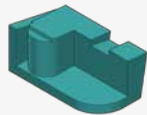
34 x1



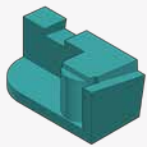
35 x1



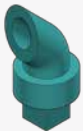
36 x1



37 x1



38 x1



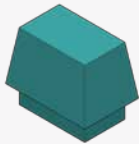
39 x2



41 x2



42 x2



43 x1



44 x2



45 x7



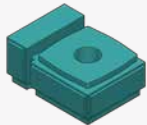
46 x4



47 x3



48 x4



51 x1



52 x1



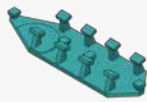
53 x1



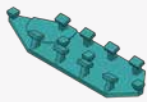
54 x2



55 x14



56 x1



57 x1



58 x1



59 x1



60 x2



61 x1

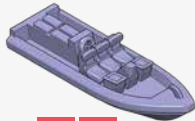


62 x1

IMPORTANT :
DUE TO SOME CHANGES, RESIN PART N° 40 IS
REPLACED BY 3D PART N°140 AND
RESIN PARTS N°50/51 ARE REPLACED BY
3D PARTS N°132/133/134.



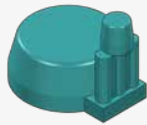
63 x2



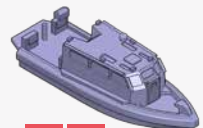
64 x1



65 x1



66 x1



67 x1



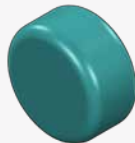
68 x1



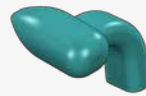
69 x2



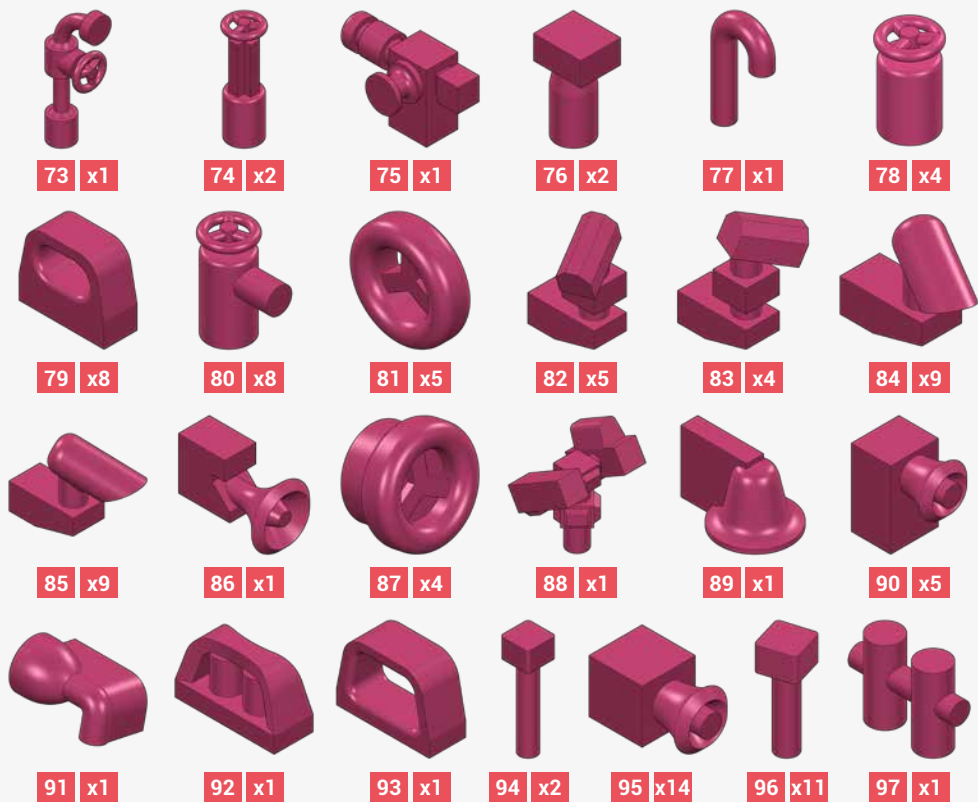
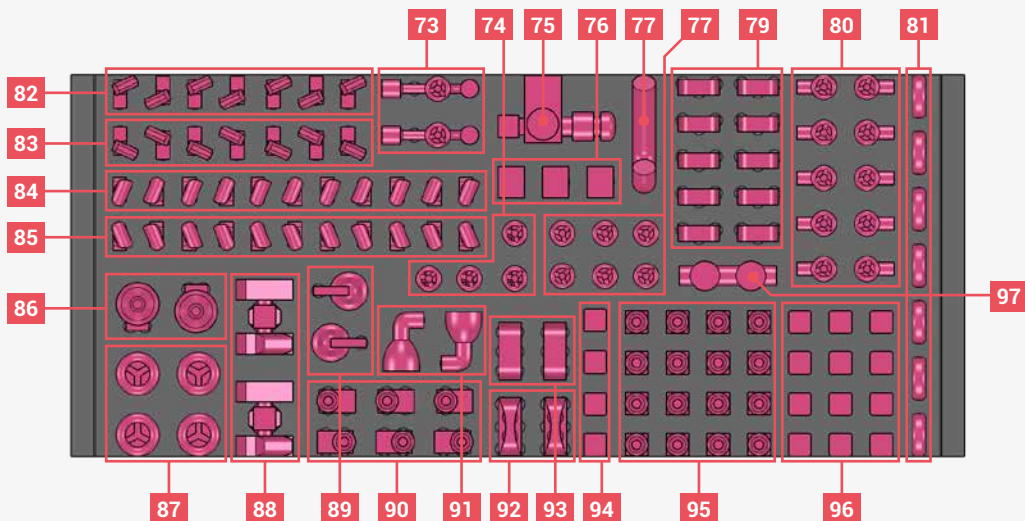
70 x1

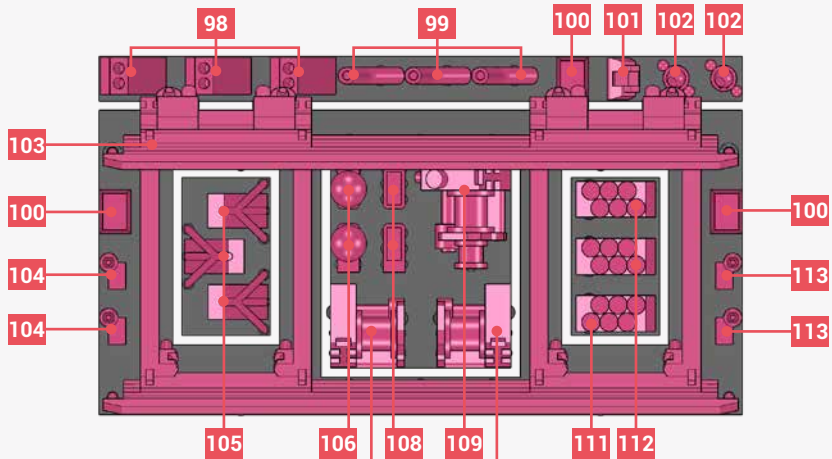


73 x2



74 x1





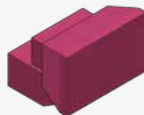
98 x2



99 x2



100 x2



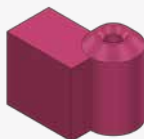
101 x2



102 x1



103 x1



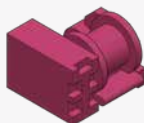
104 x1



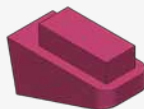
105 x2



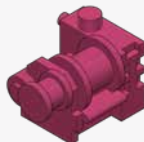
106 x1



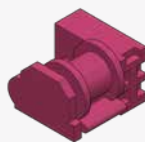
107 x1



108 x1



109 x1



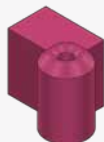
110 x1



111 x1

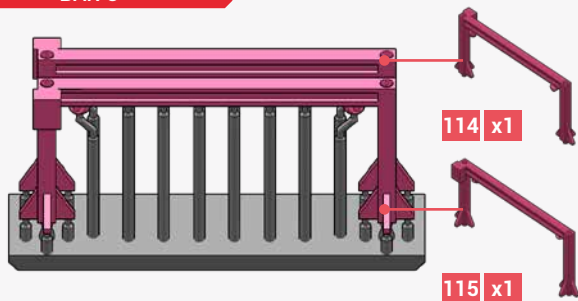


112 x1



113 x1

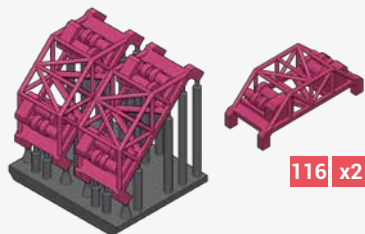
BAR C



114 x1

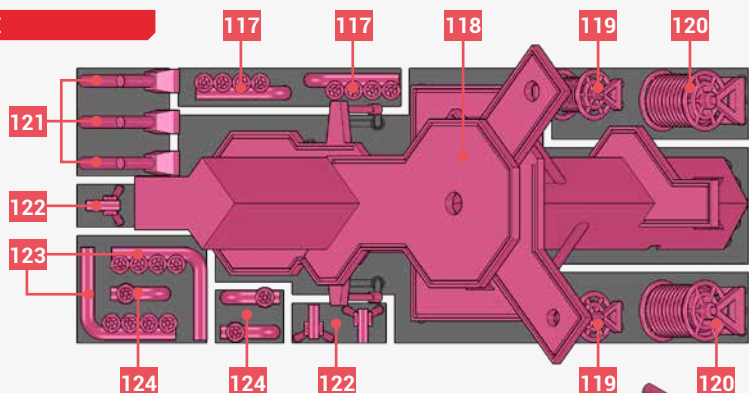
115 x1

BAR D

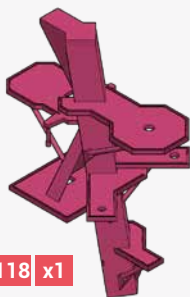


116 x2

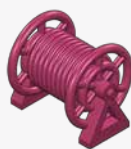
BAR E



117 x1



118 x1



119 x1



120 x1



121 x2



122 x2

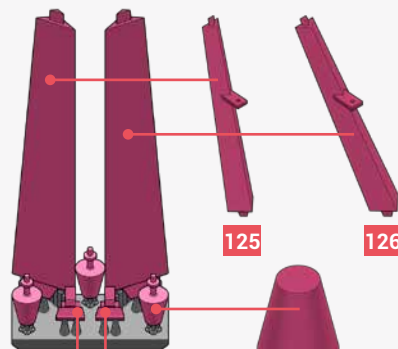


123 x1



124 x2

OTHER BARS

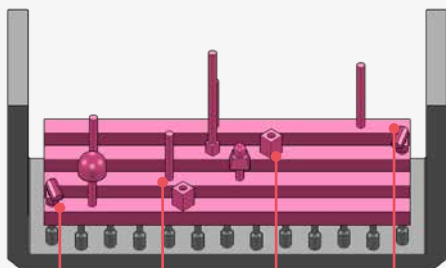


101

125

126

127 x2

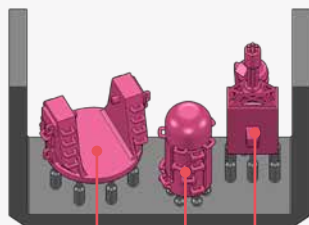


128

129

130

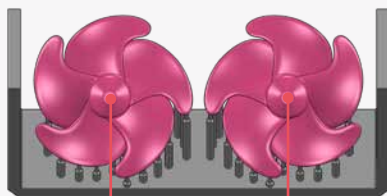
131



132

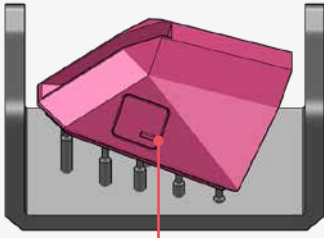
133

134

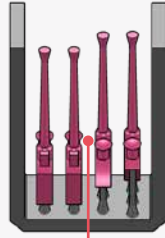


135

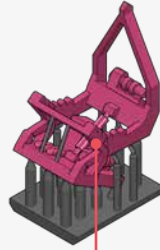
136



137



138



139

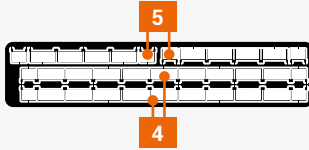
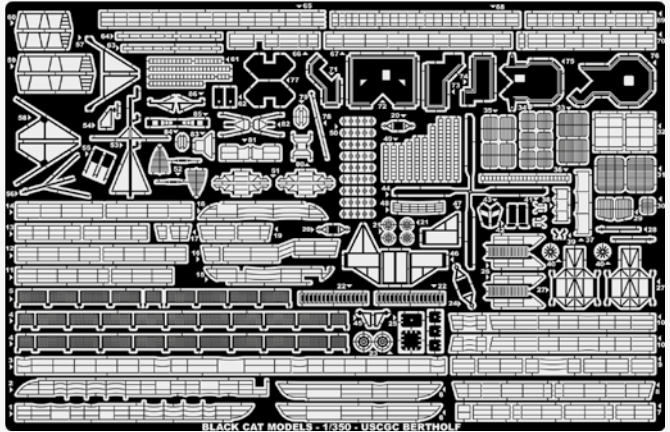


140 x2

PHOTO ETCH PARTS

IMPORTANT :
DUE TO SOME CHANGES,
PHOTOETCH PARTS N°
20/21/23/24/27/70>77 ARE
NOT NEEDED ANYMORE.

IMPORTANT :
PLEASE USE NEW
PHOTOETCH PARTS TO
REPLACE PARTS N°4/5



BRASS PARTS



Bx4 : $\varnothing=0.2\text{MM}$ L=5MM

Cx4 : $\varnothing=0.2\text{MM}$ L=29MM

Dx2 : $\varnothing=0.3\text{MM}$ L=10MM

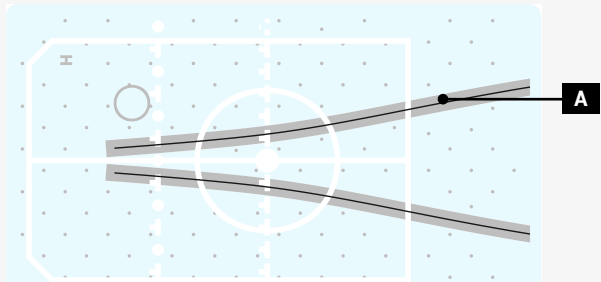
Ex5 : $\varnothing=0.4\text{MM}$ L=5MM

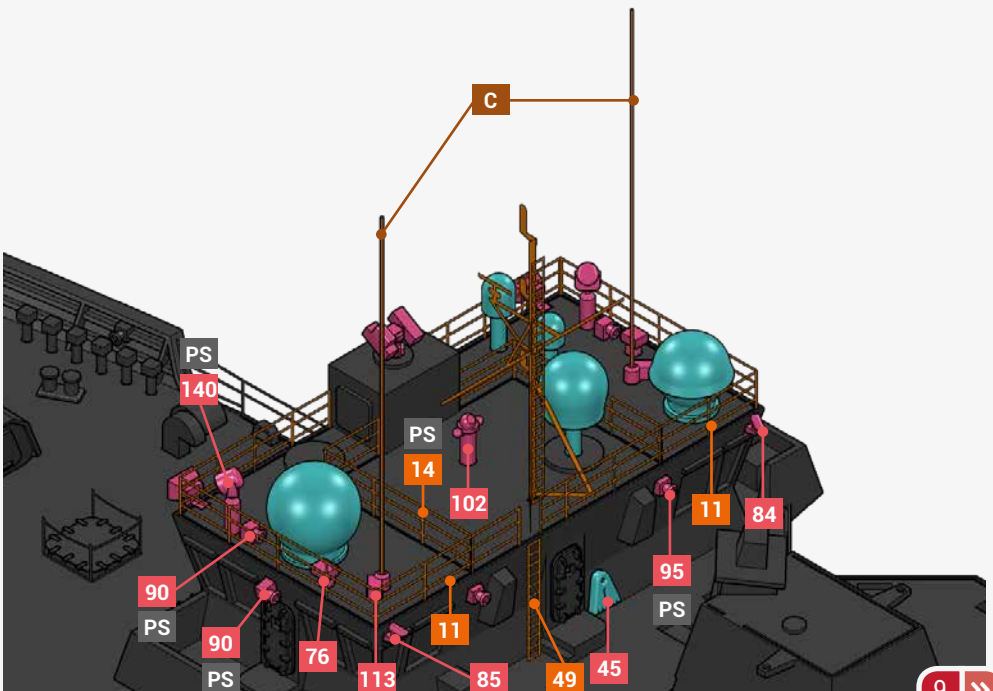
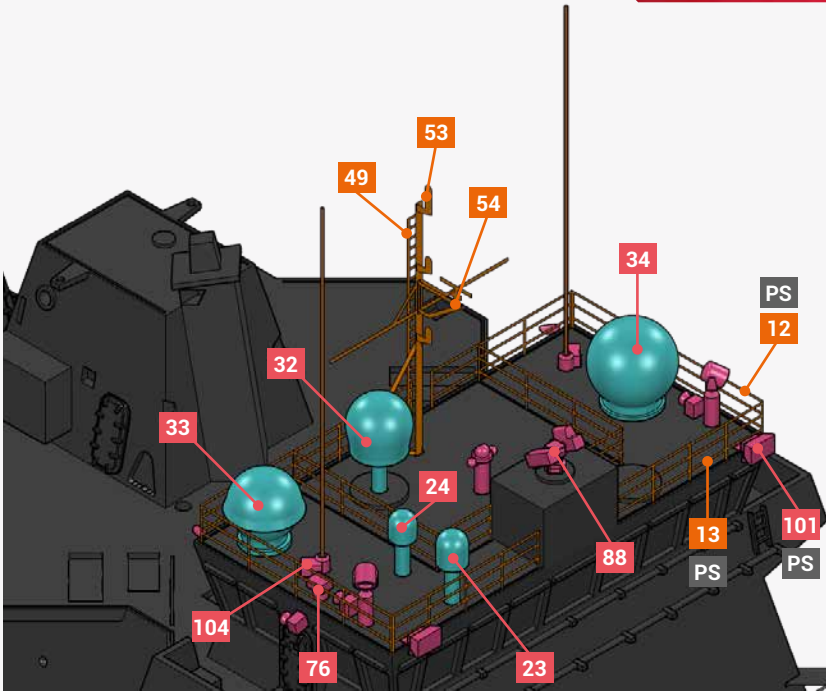
Fx6 : $\varnothing=0.6\text{MM}$ L=7MM

Gx2 : $\varnothing=1.4\text{MM}$ L=24MM

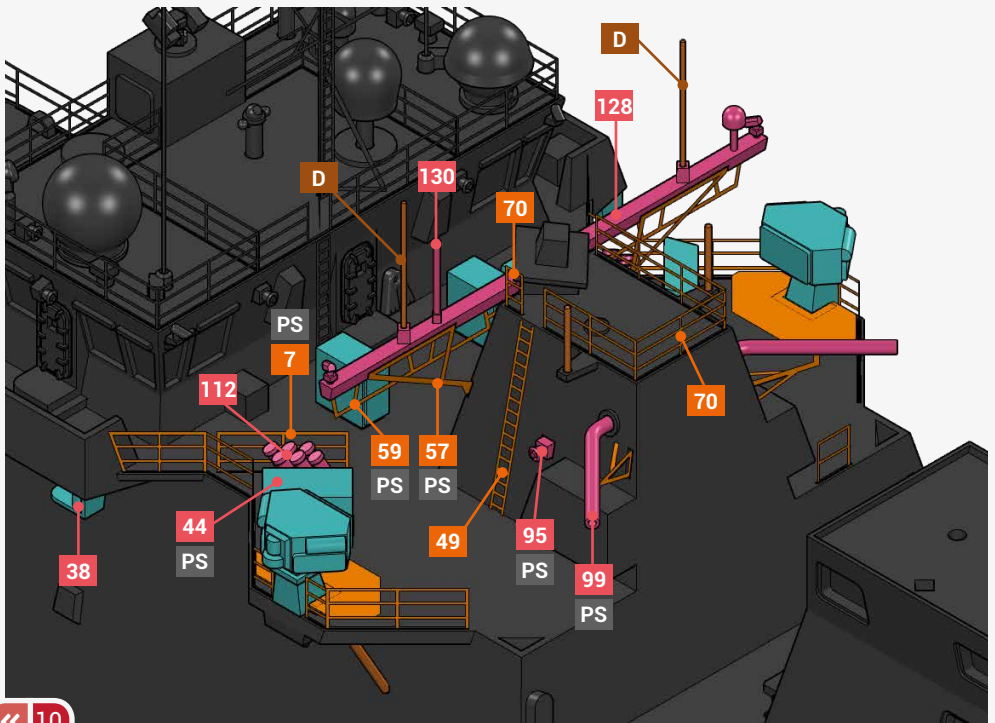
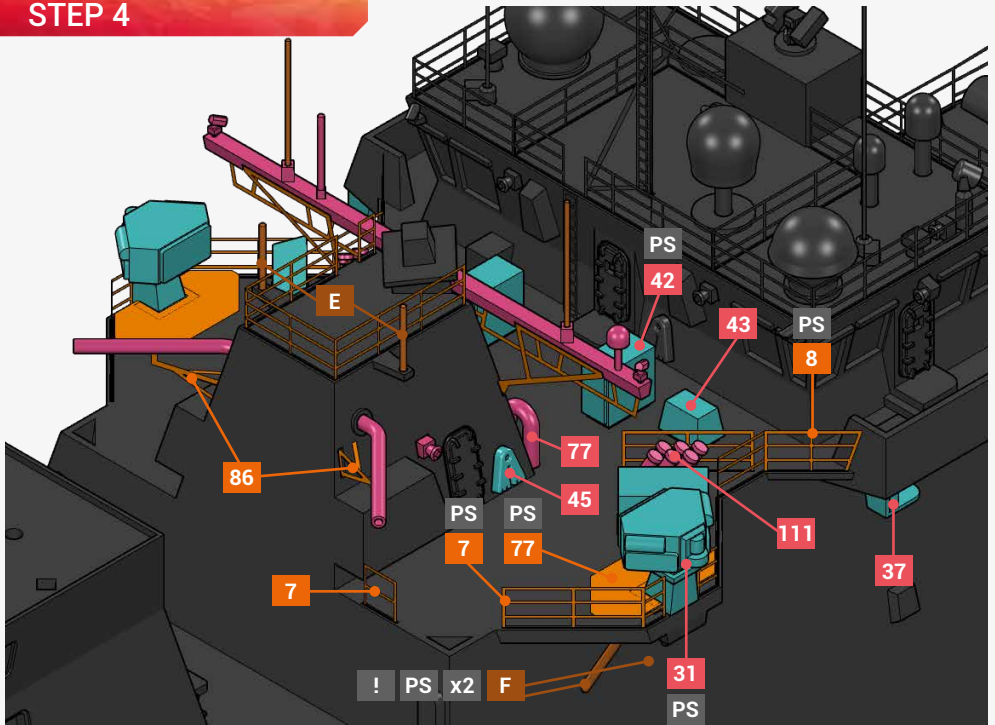
A x1

DECALS



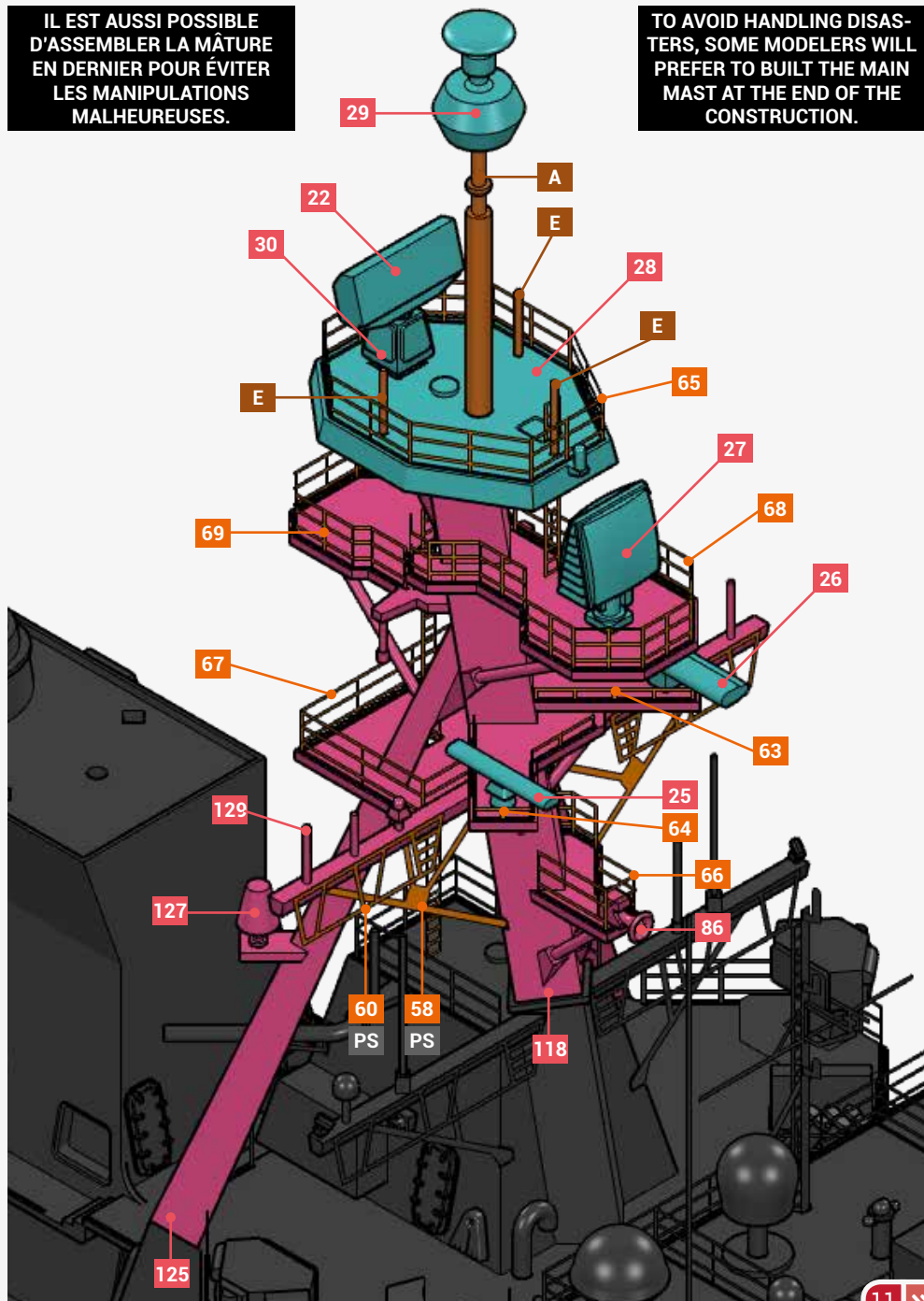


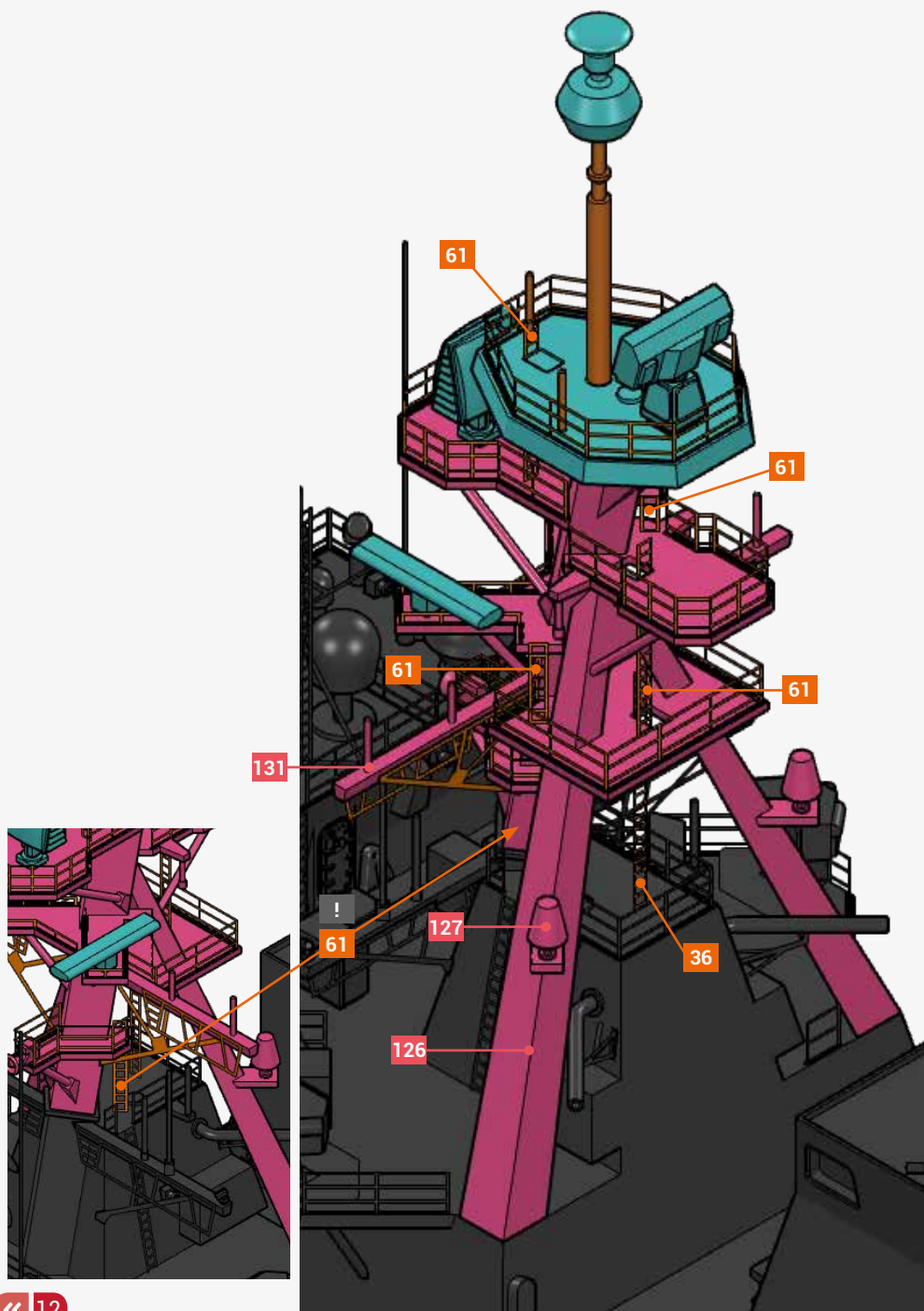
STEP 4

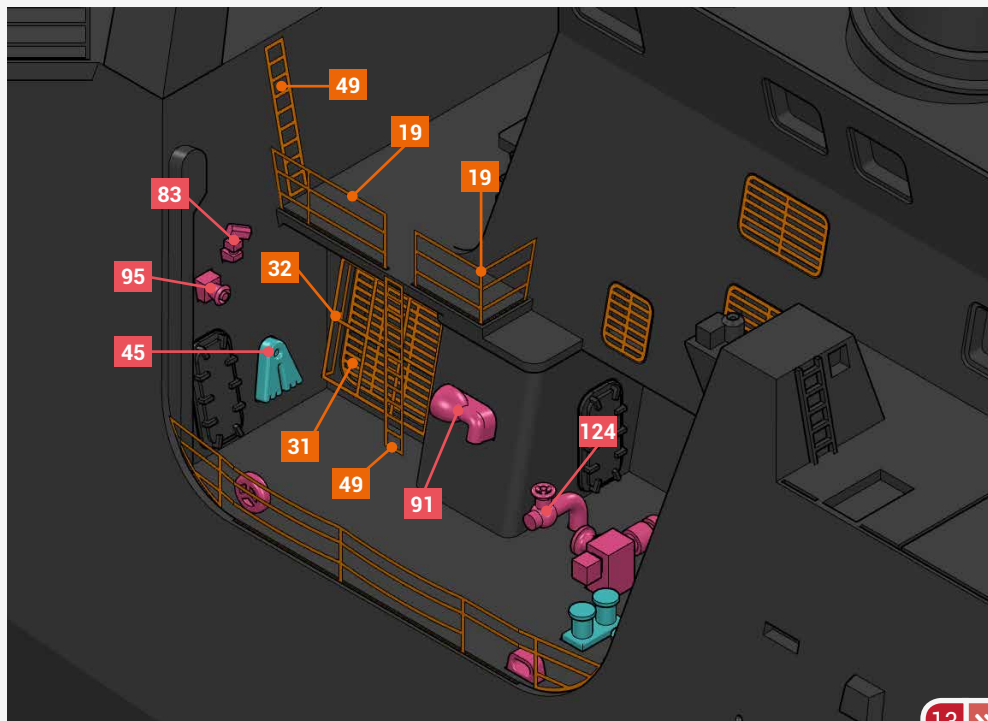
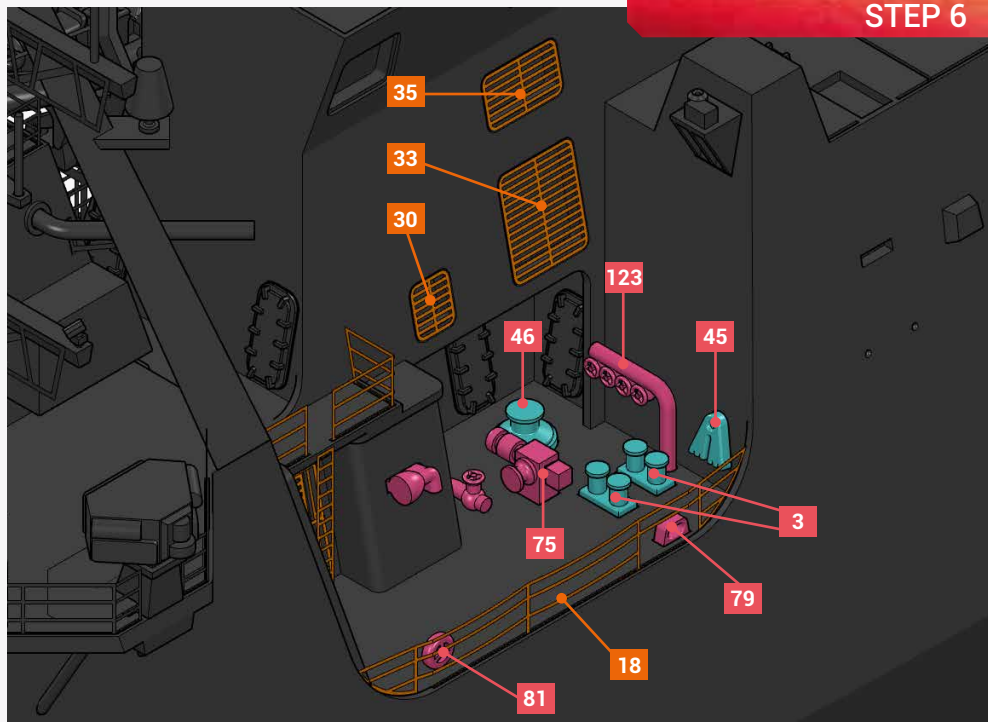


IL EST AUSSI POSSIBLE
D'ASSEMBLER LA MÂTURE
EN DERNIER POUR ÉVITER
LES MANIPULATIONS
MALHEUREUSES.

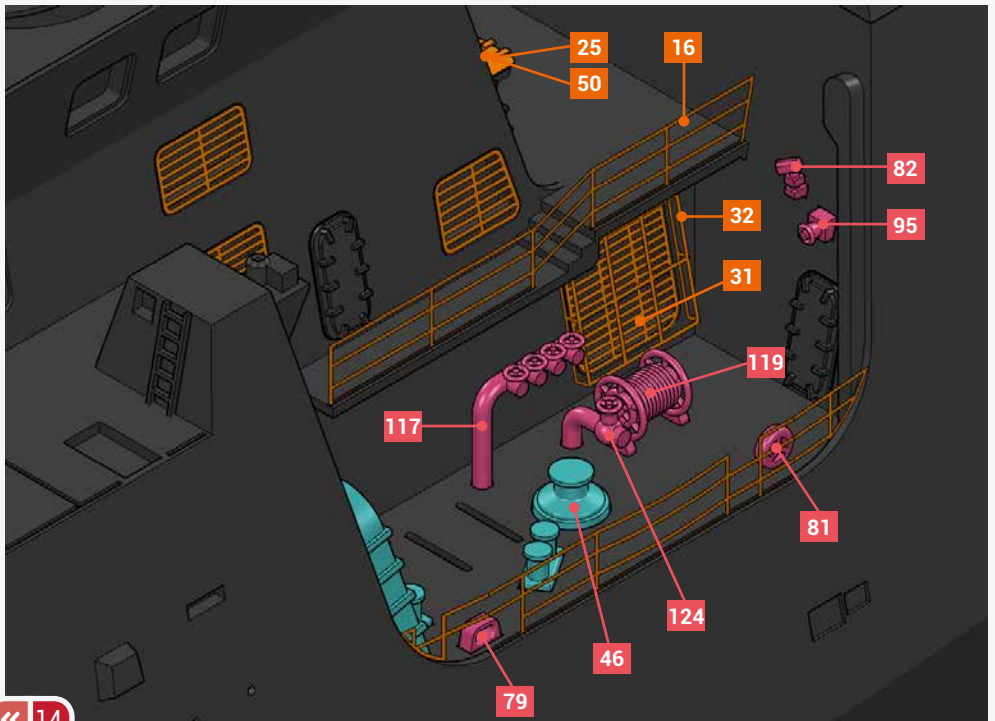
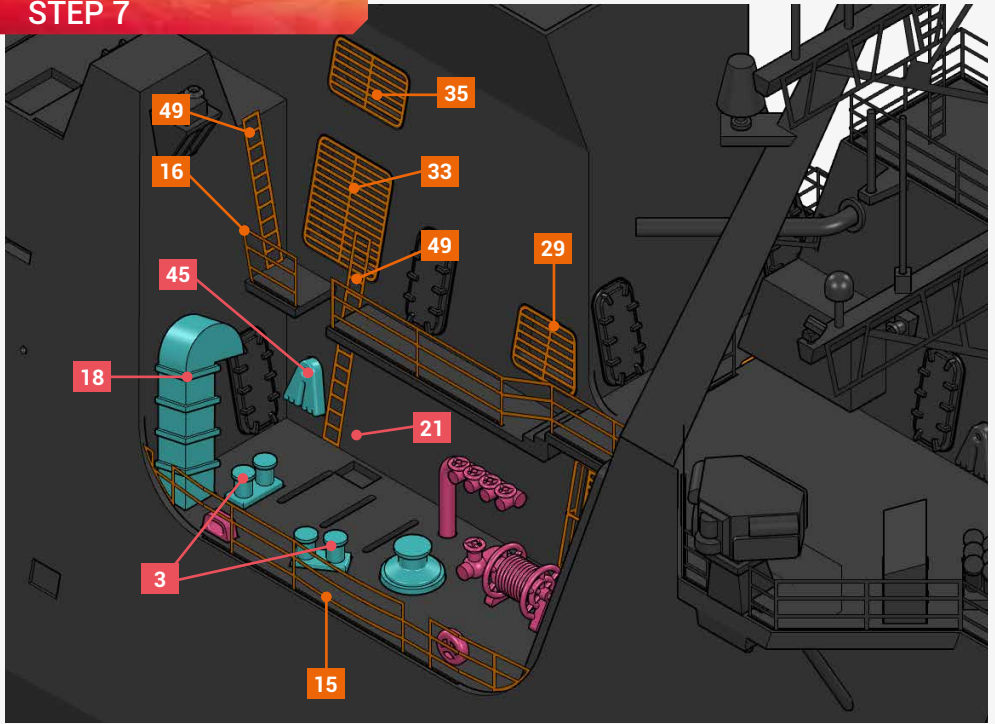
TO AVOID HANDLING DISAS-
TERS, SOME MODELERS WILL
PREFER TO BUILD THE MAIN
MAST AT THE END OF THE
CONSTRUCTION.

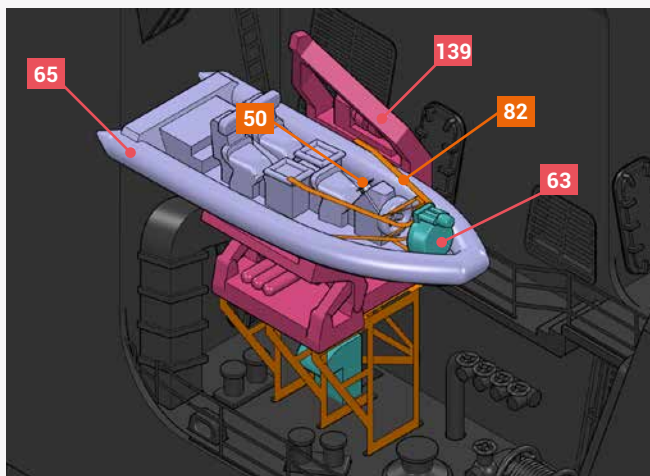
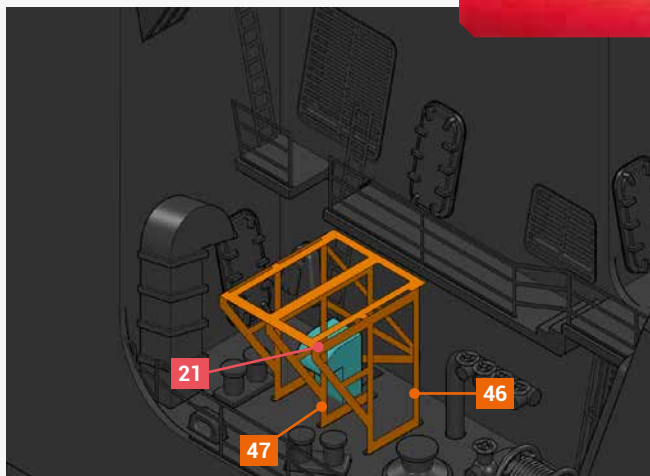




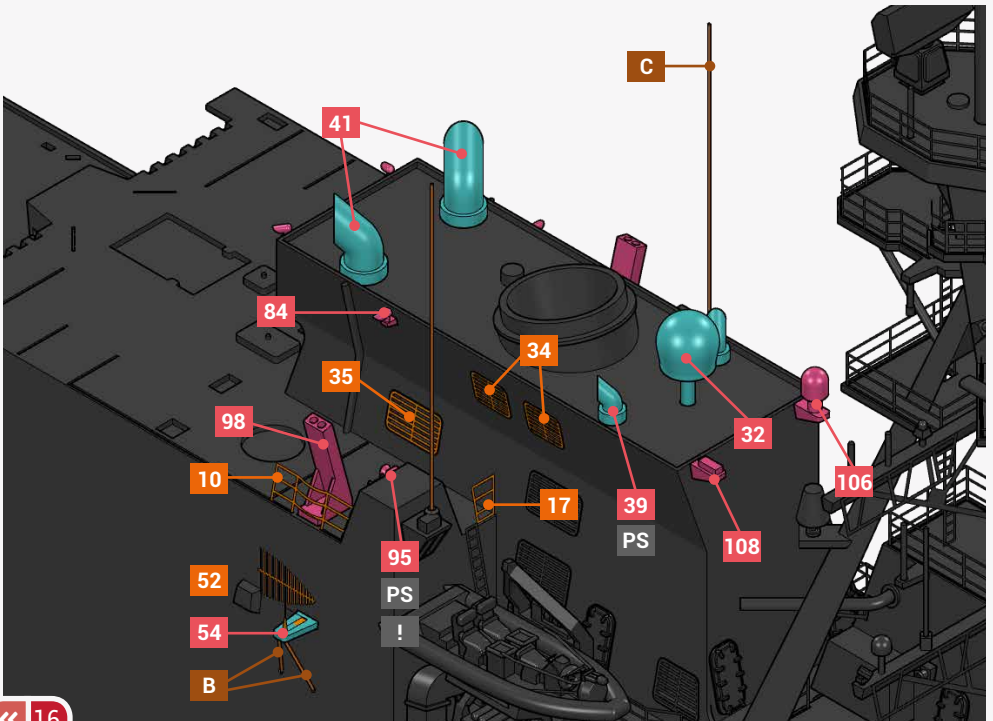


STEP 7

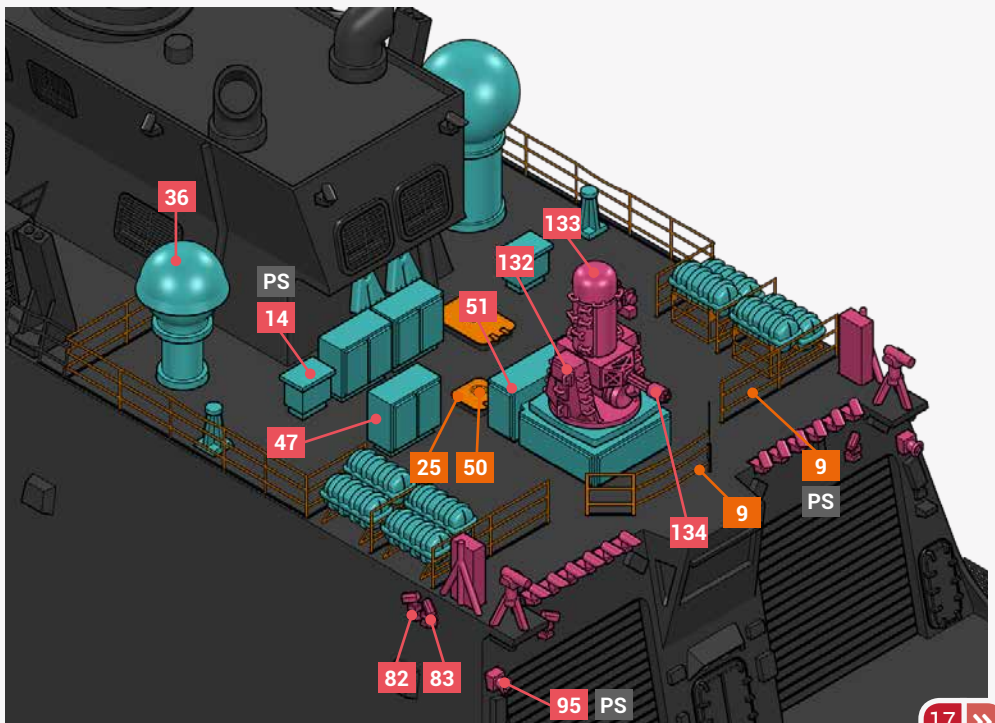
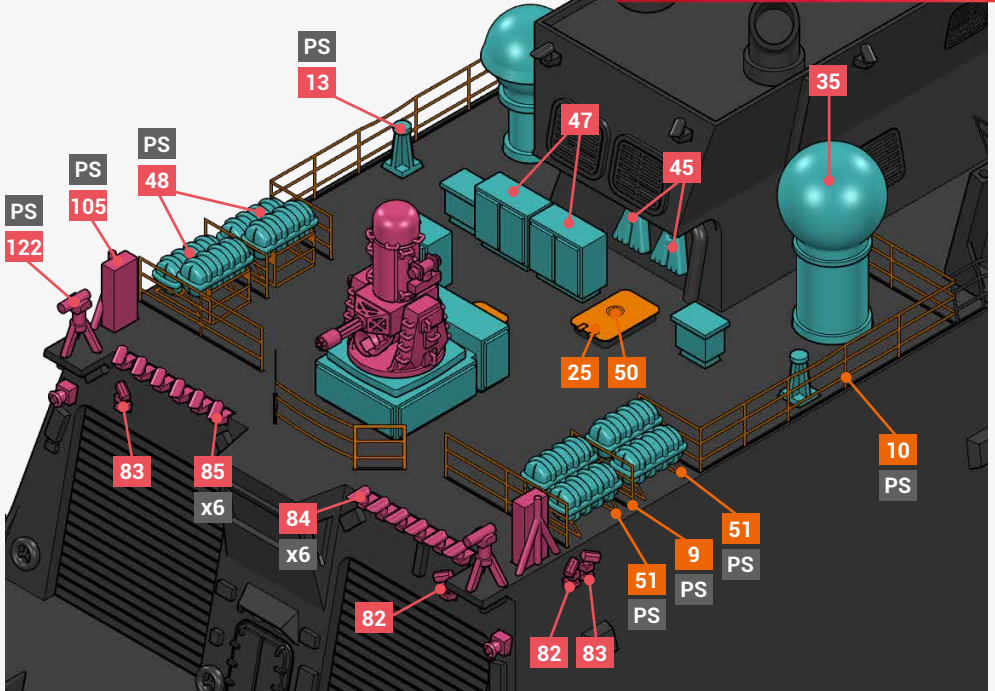




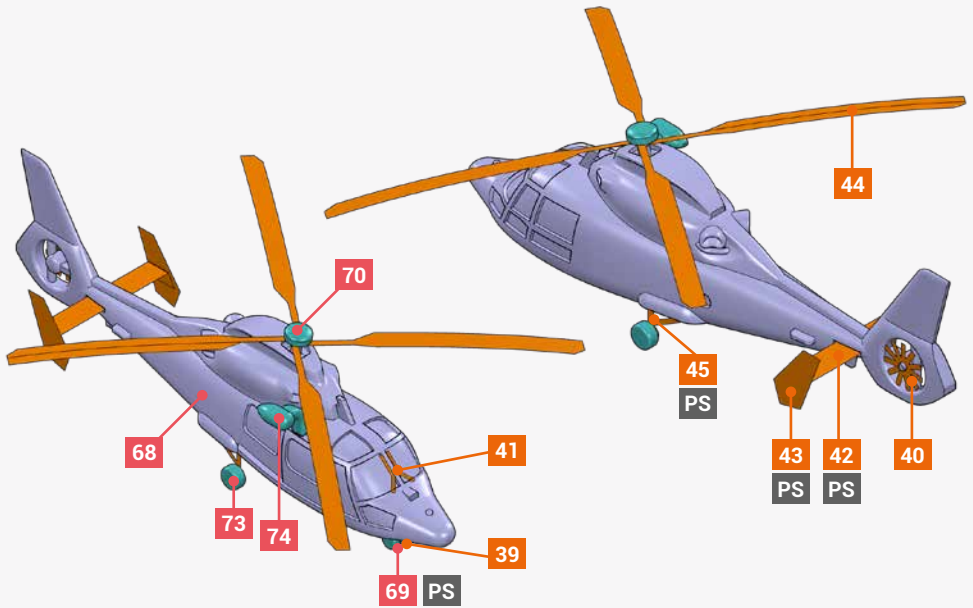
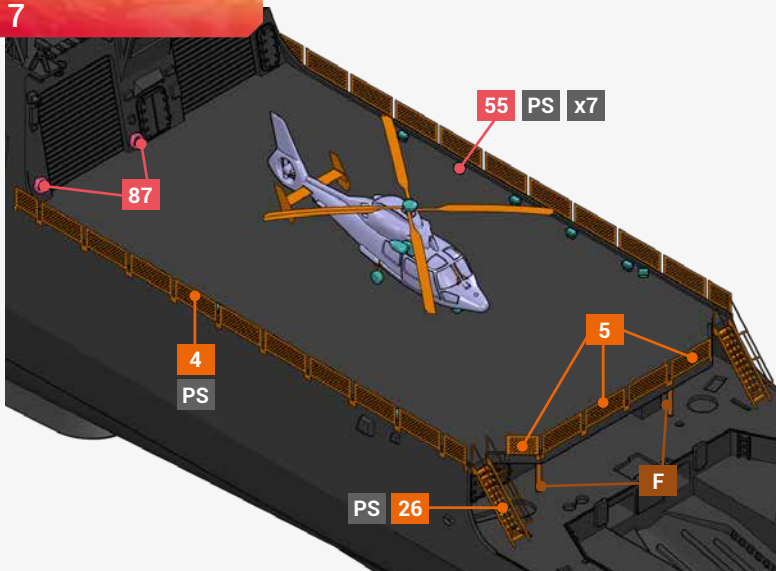
STEP 9

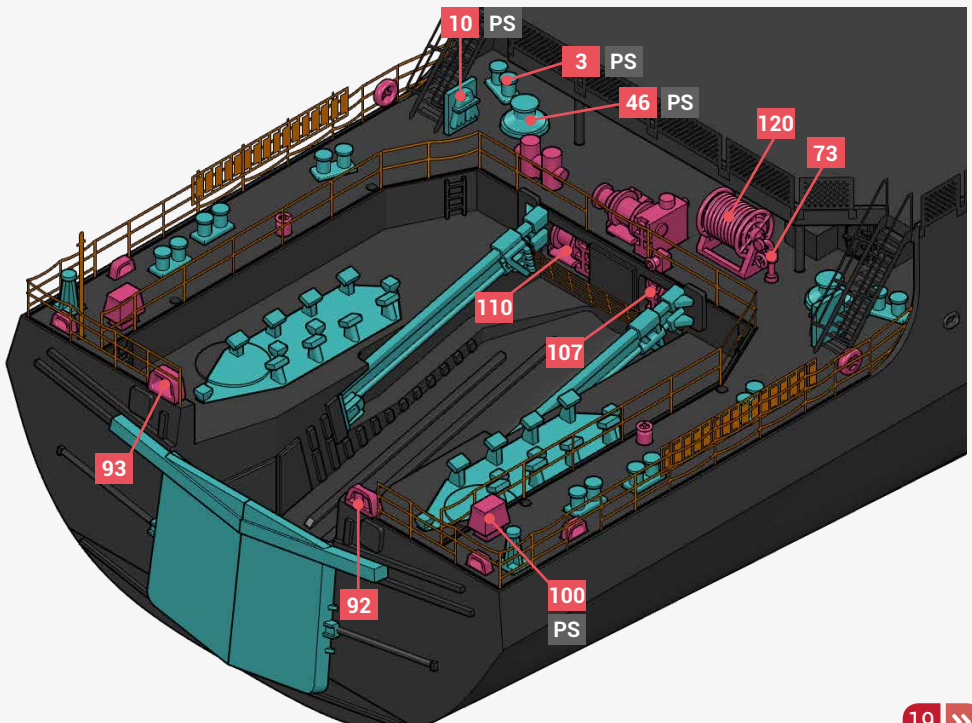
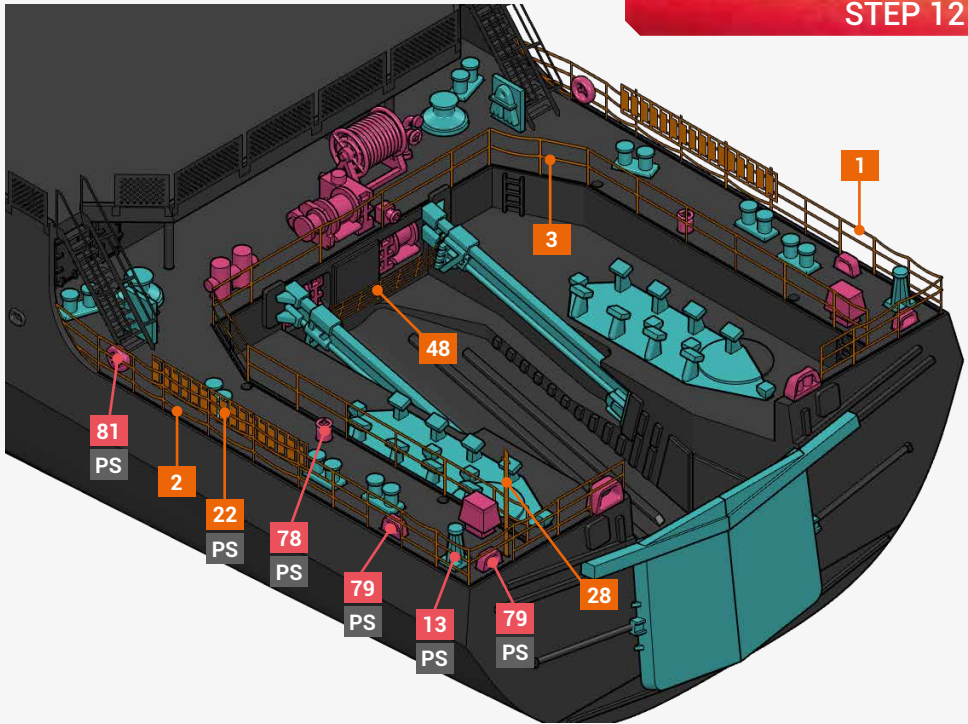


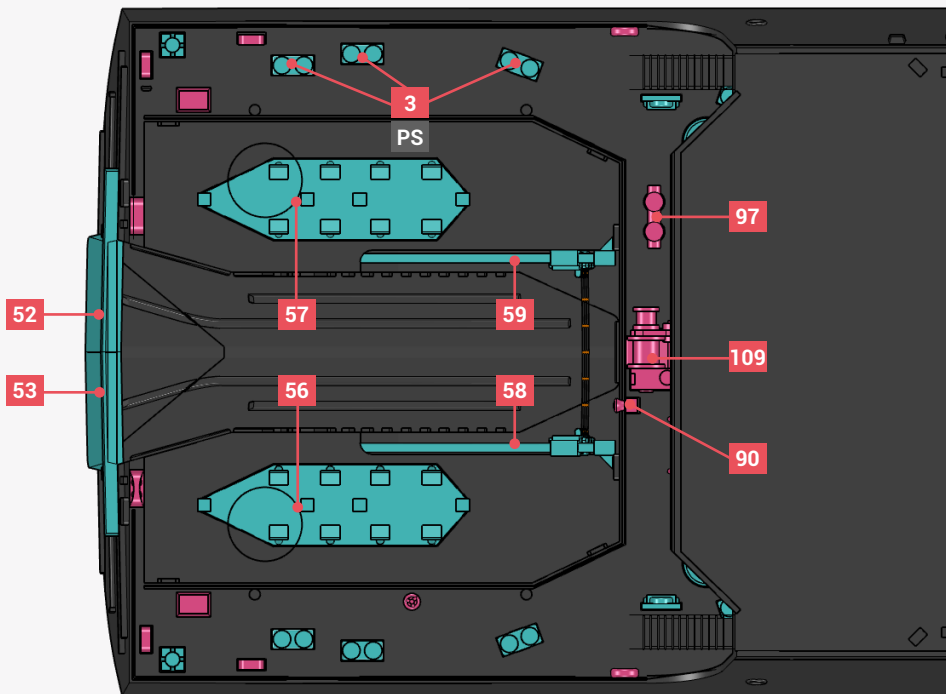
STEP 10



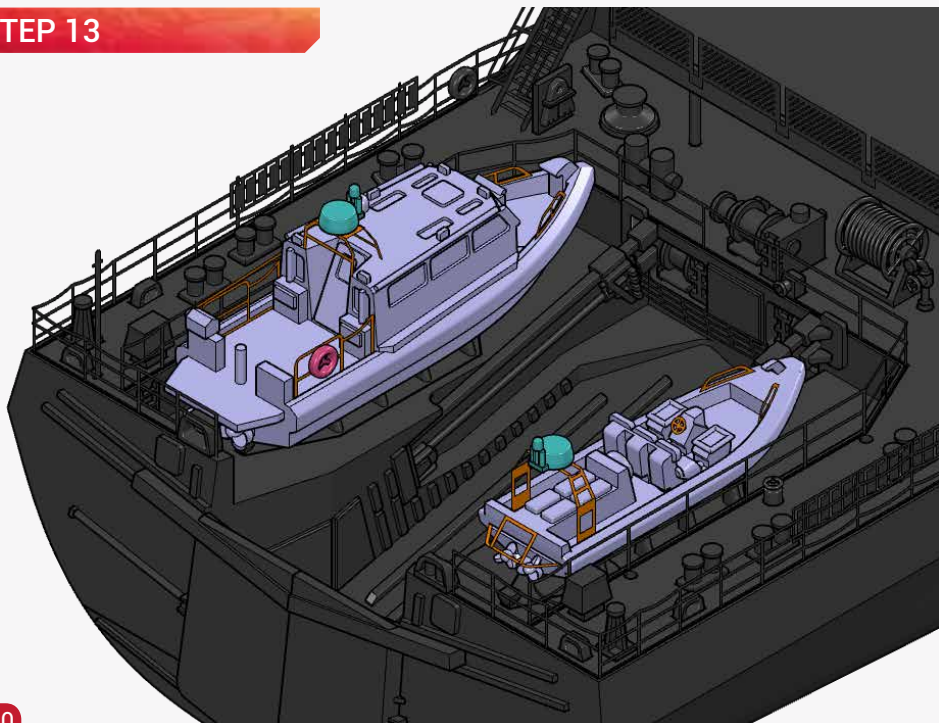
STEP 7

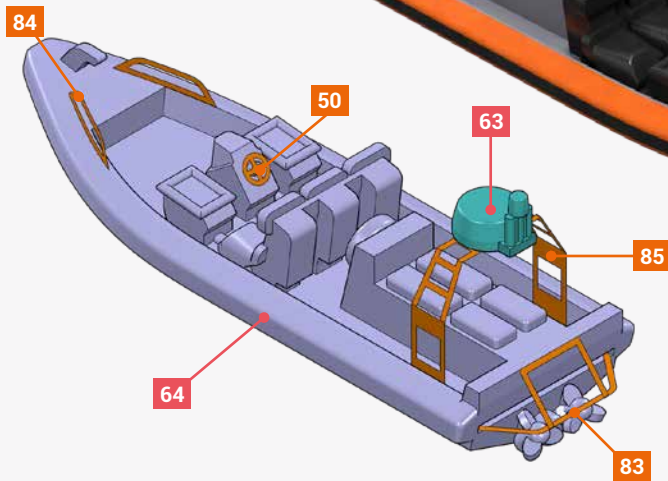
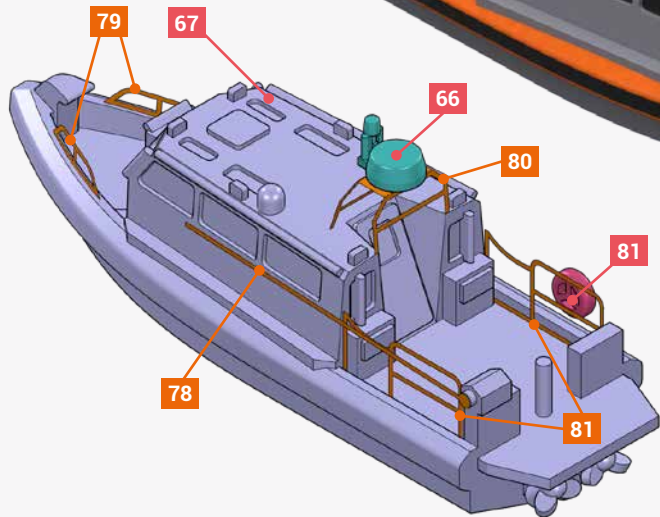




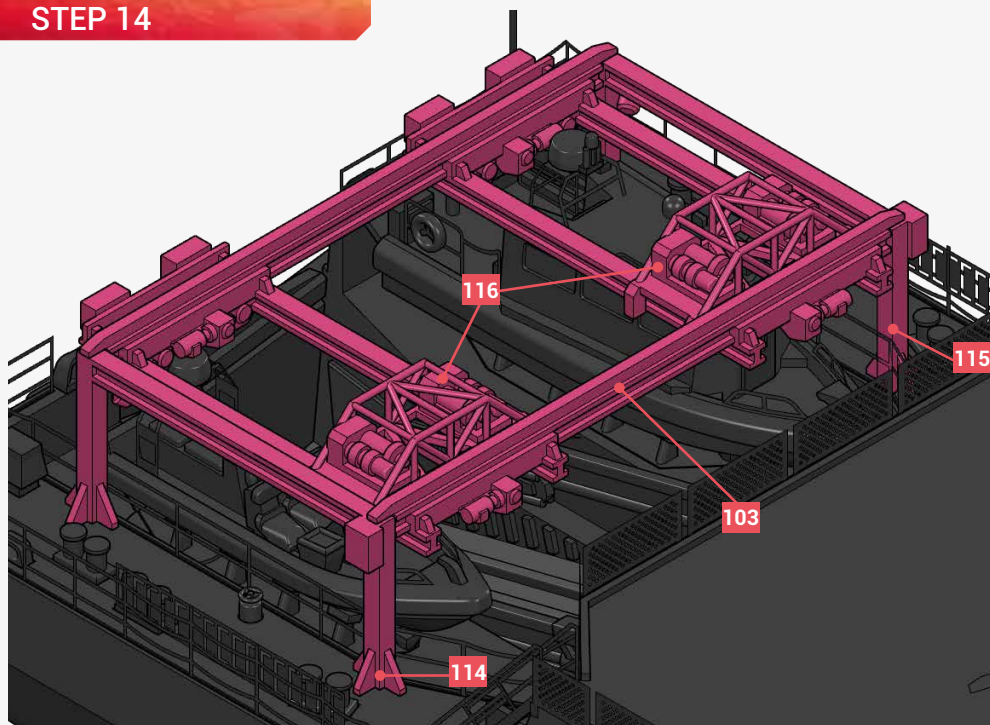


STEP 13



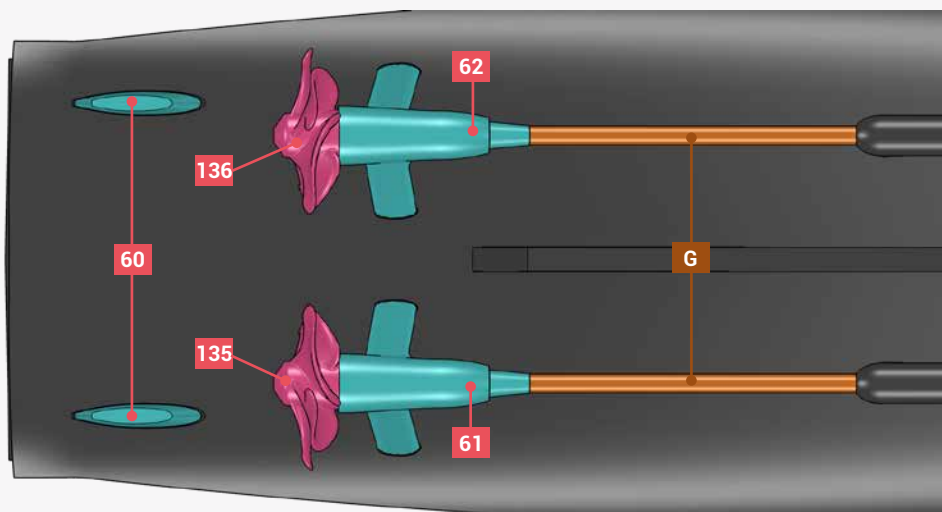


STEP 14

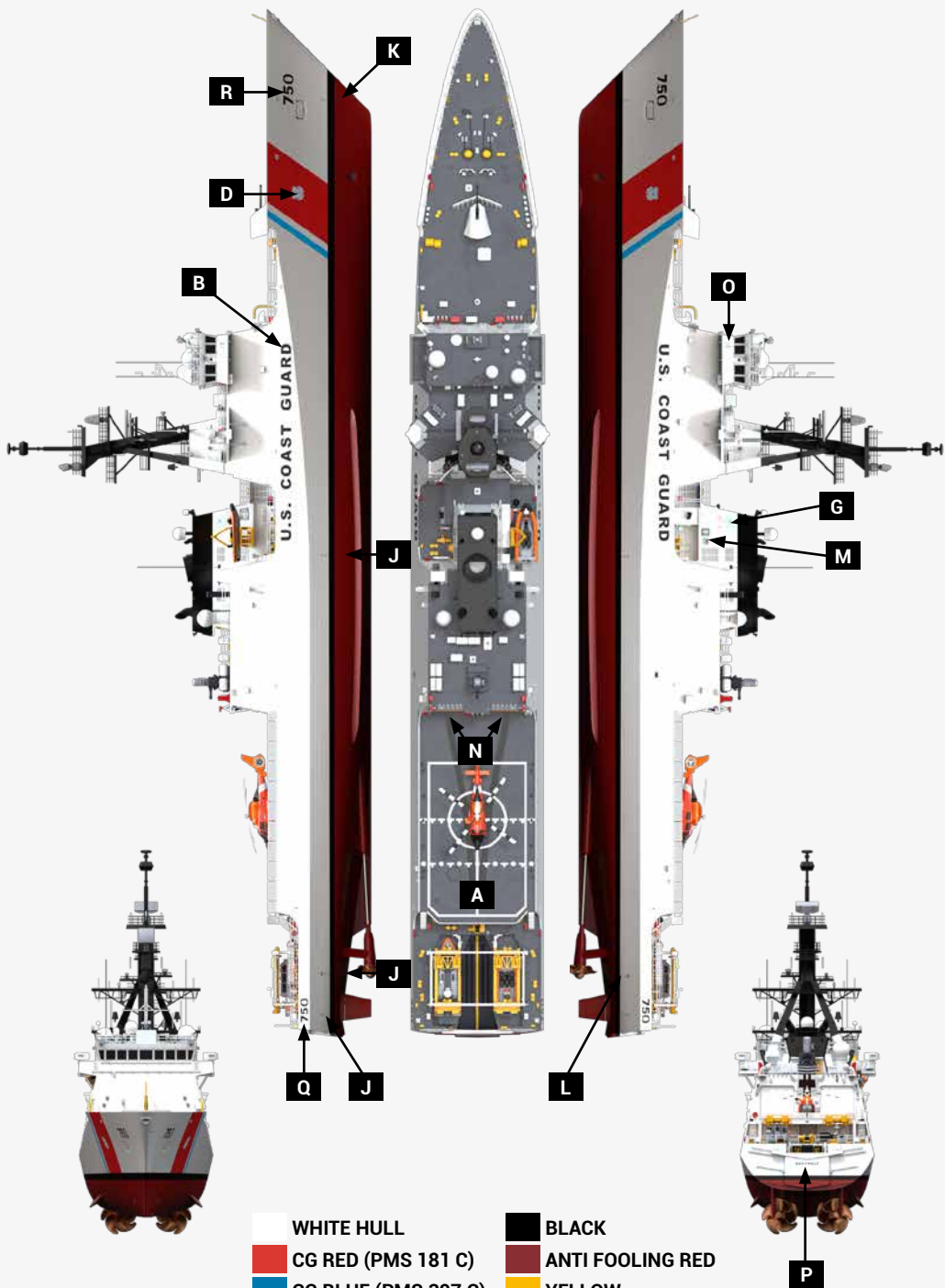










STEP 15

FULL HULL VERSION







- | | | | |
|---|----------------------|---|------------------|
|  | WHITE HULL |  | BLACK |
|  | CG RED (PMS 181 C) |  | ANTI FOILING RED |
|  | CG BLUE (PMS 307 C) |  | YELLOW |
|  | DARK GRAY (FS 36077) |  | RED |